

1.

1.1. P2Q1

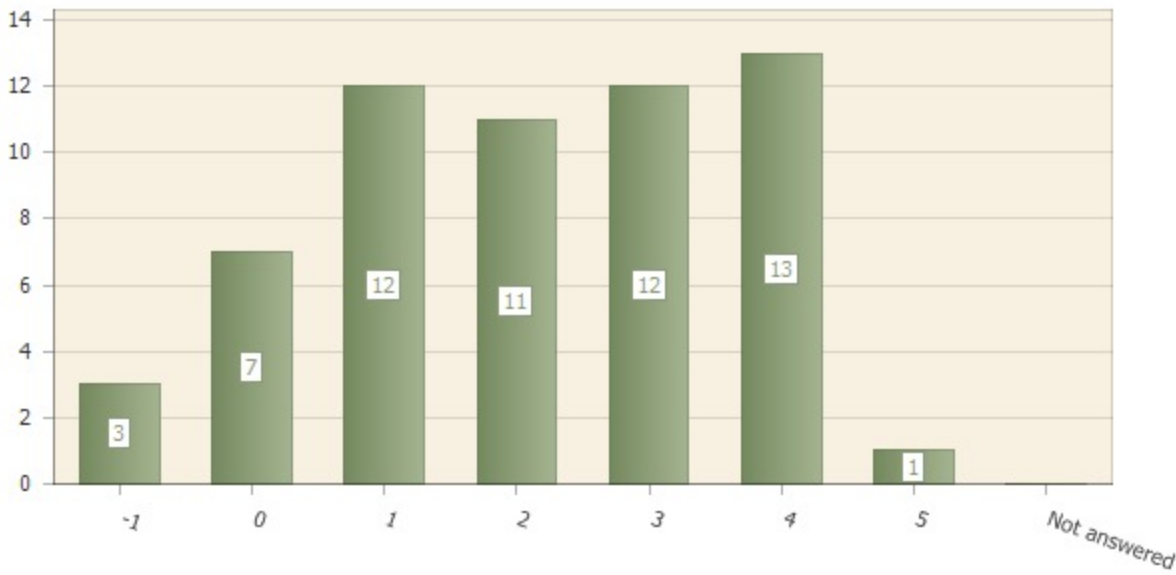
How would you rate transparency at Cañada?

Question type: Matrix & Multimatrix

Number of responses: 59

Number of respondents: 59

Scale: 0 (Very Unsatisfactory) – 5 (Very Satisfactory); -1: NA



Matrix row	Not answered	Mean	Std dev	Count and % Rating 0	Count and % Rating 1	Count and % Rating 2	Count and % Rating 3	Count and % Rating 4	Count and % Rating 5	NA option
rating	3 (5.1%)	2.3	1.4	7 (11.9%)	12 (20.3%)	11 (18.6%)	12 (20.3%)	13 (22.0%)	1 (1.7%)	3 (5.1%)

1.2. P2Q2

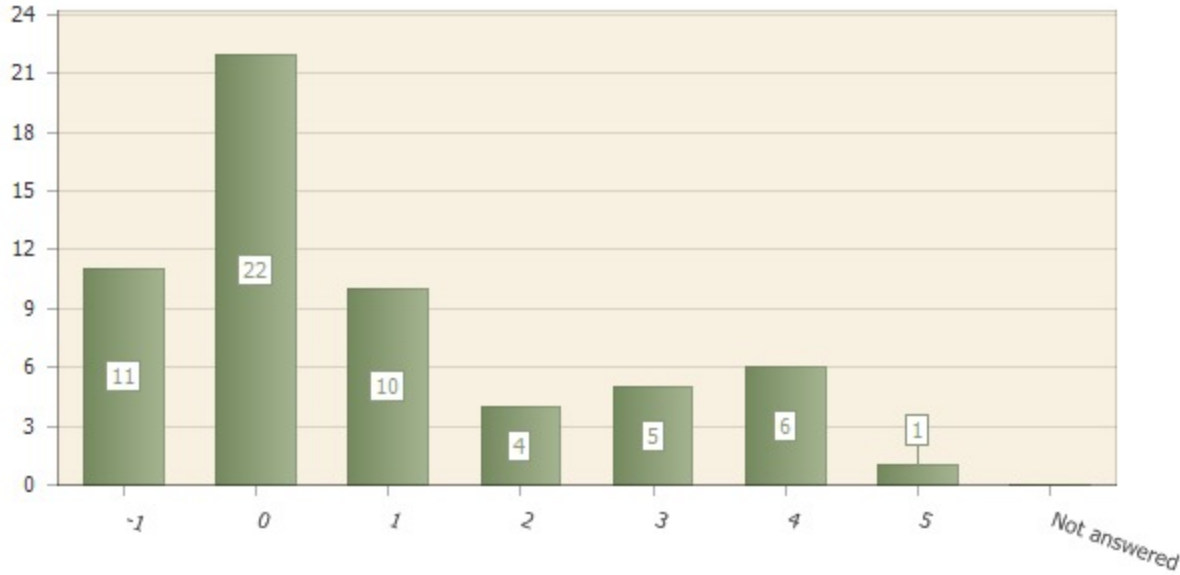
How well are faculty and staff included in the evaluation process for campus administrators?

Question type: Matrix & Multimatrix

Number of responses: 59

Number of respondents: 59

Scale: 0 (Very Unsatisfactory) – 5 (Very Satisfactory); -1: NA



Matrix row	Not answered	Mean	Std dev	Count and % Rating 0	Count and % Rating 1	Count and % Rating 2	Count and % Rating 3	Count and % Rating 4	Count and % Rating 5	NA option
rating	11 (18.6%)	1.3	1.5	22 (37.3%)	10 (16.9%)	4 (6.8%)	5 (8.5%)	6 (10.2%)	1 (1.7%)	11 (18.6%)

1.3. P2Q3

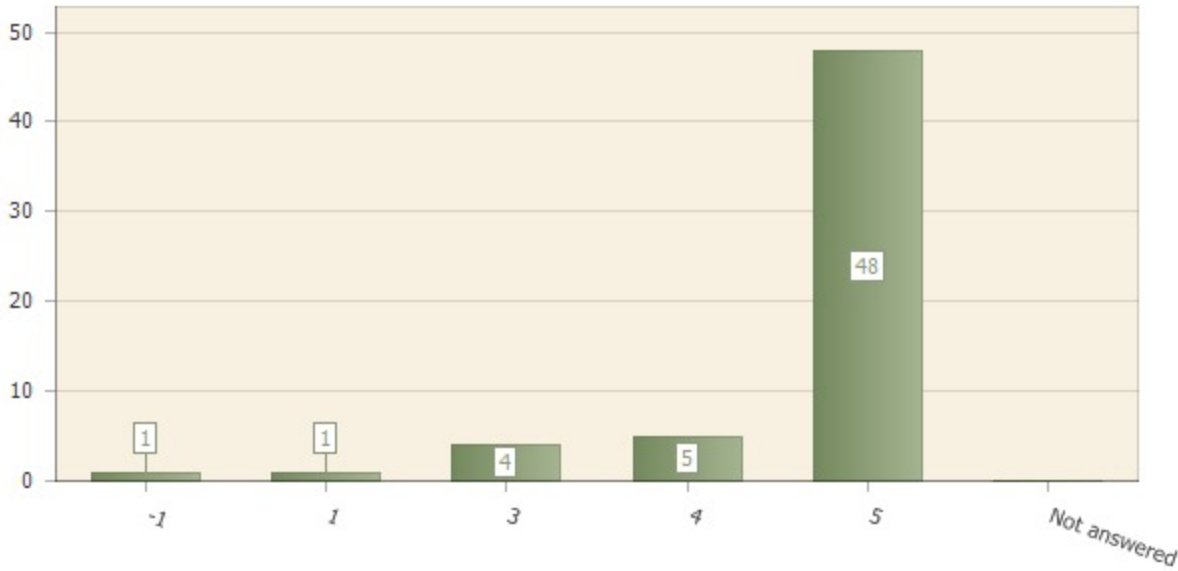
How important is it for campus administrators to be evaluated ANONYMOUSLY by faculty and staff?

Question type: Matrix & Multimatrix

Number of responses: 59

Number of respondents: 59

Scale: 0 (Not important) – 5 (Very important); -1: NA



Matrix row	Not answered	Mean	Std dev	Count and % Rating 0	Count and % Rating 1	Count and % Rating 2	Count and % Rating 3	Count and % Rating 4	Count and % Rating 5	NA option
rating	1 (1.7%)	4.7	0.7	0 (0%)	1 (1.7%)	0 (0%)	4 (6.8%)	5 (8.5%)	48 (81.4%)	1 (1.7%)

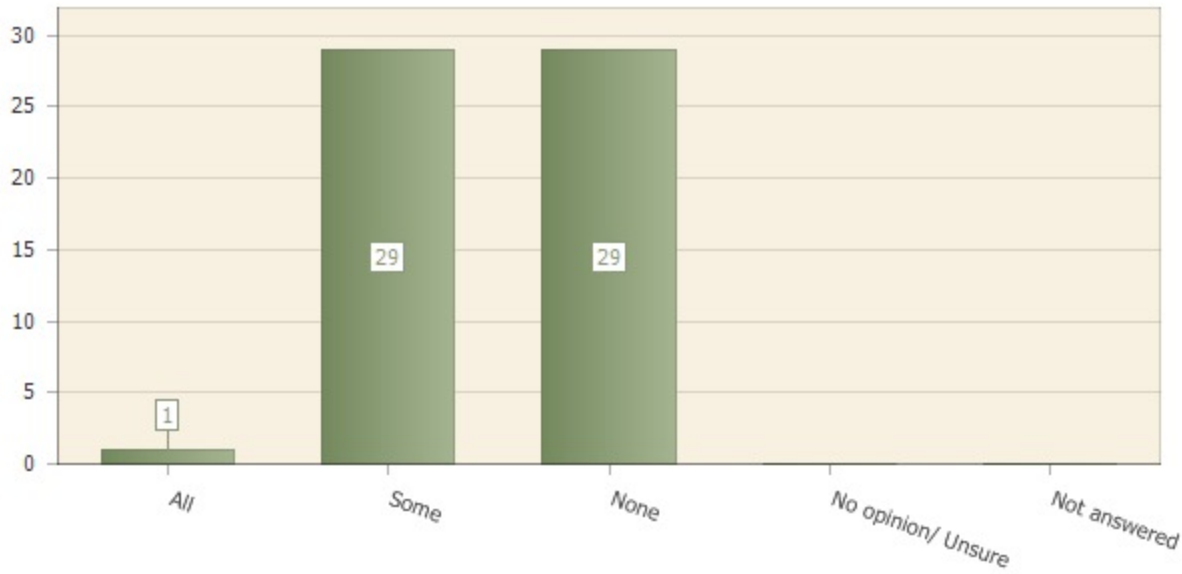
1.4. P2Q4

Should campus administrators be able to select all, some, or none of their own evaluators?

Question type: Multiple choice

Number of responses: 59

Number of respondents: 59



Answer	Count	Percent answer
All	1	1.7%
Some	29	49.2%
None	29	49.2%
No opinion/ Unsure	0	0%
Not answered	0	0%

1.5. P2Q5

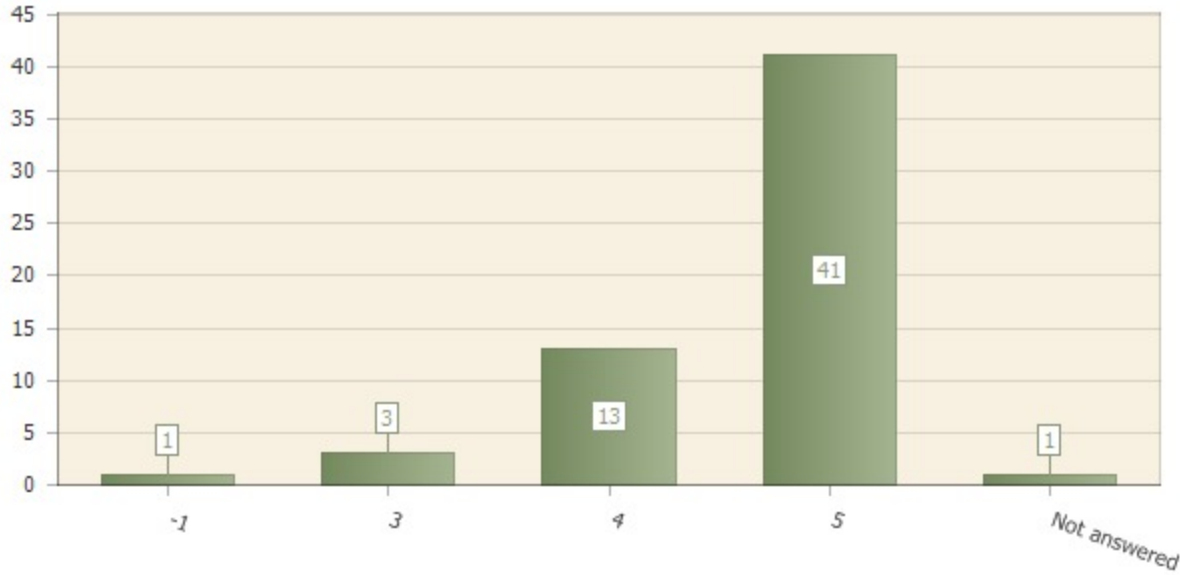
How important is it for ALL faculty and staff to have the option of evaluating their Dean, Vice Presidents, and President?

Question type: Matrix & Multimatrix

Number of responses: 58

Number of respondents: 59

Scale: 0 (Not important) – 5 (Very important); -1: NA



Matrix row	Not answered	Mean	Std dev	Count and % Rating 0	Count and % Rating 1	Count and % Rating 2	Count and % Rating 3	Count and % Rating 4	Count and % Rating 5	NA option
rating	2 (3.4%)	4.7	0.6	0 (0%)	0 (0%)	0 (0%)	3 (5.2%)	13 (22.4%)	41 (70.7%)	1 (1.7%)

1.8. P3Q1

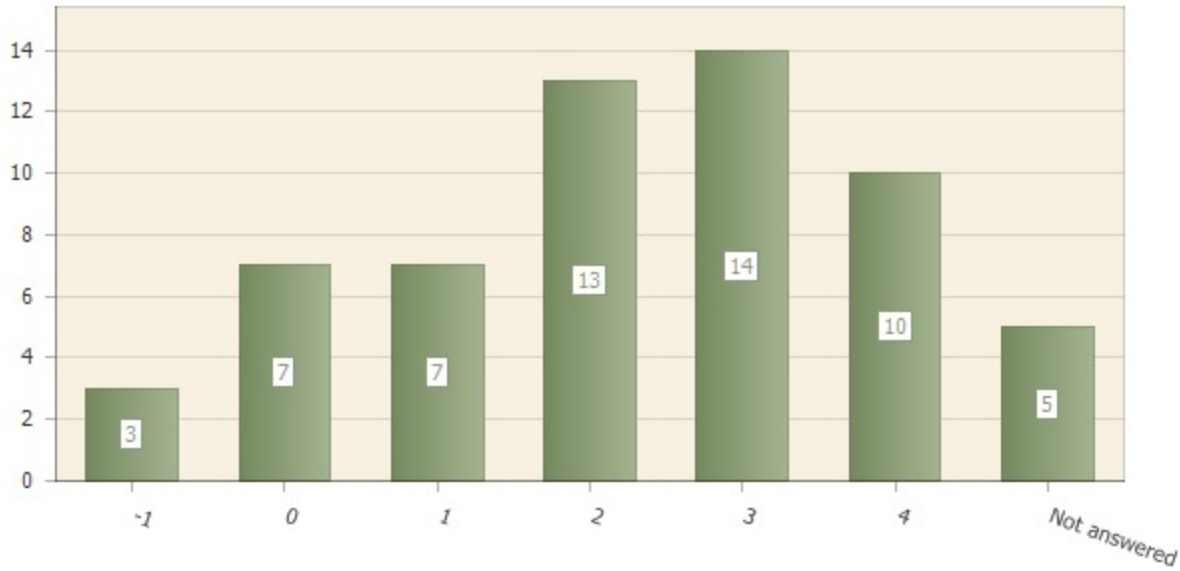
How would you rate the decision-making processes at Cañada?

Question type: Matrix & Multimatrix

Number of responses: 54

Number of respondents: 59

Scale: 0 (Very Unsatisfactory) – 5 (Very Satisfactory); -1: NA



Matrix row	Not answered	Mean	Std dev	Count and % Rating 0	Count and % Rating 1	Count and % Rating 2	Count and % Rating 3	Count and % Rating 4	Count and % Rating 5	NA option
rating	8 (13.6%)	2.3	1.3	7 (13.0%)	7 (13.0%)	13 (24.1%)	14 (25.9%)	10 (18.5%)	0 (0%)	3 (5.6%)

1.9. P3Q2

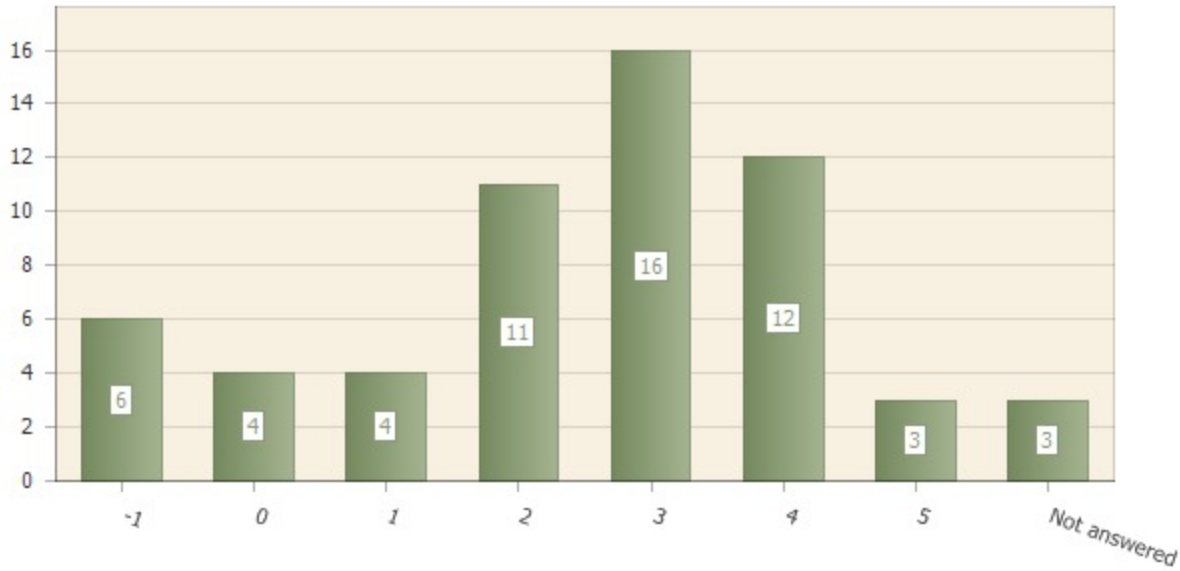
How would you rate the decision-making processes for course offerings at Cañada?

Question type: Matrix & Multimatrix

Number of responses: 56

Number of respondents: 59

Scale: 0 (Very Unsatisfactory) – 5 (Very Satisfactory); -1: NA



Matrix row	Not answered	Mean	Std dev	Count and % Rating 0	Count and % Rating 1	Count and % Rating 2	Count and % Rating 3	Count and % Rating 4	Count and % Rating 5	NA option
rating	9 (15.3%)	2.7	1.3	4 (7.1%)	4 (7.1%)	11 (19.6%)	16 (28.6%)	12 (21.4%)	3 (5.4%)	6 (10.7%)

1.10. P3Q3

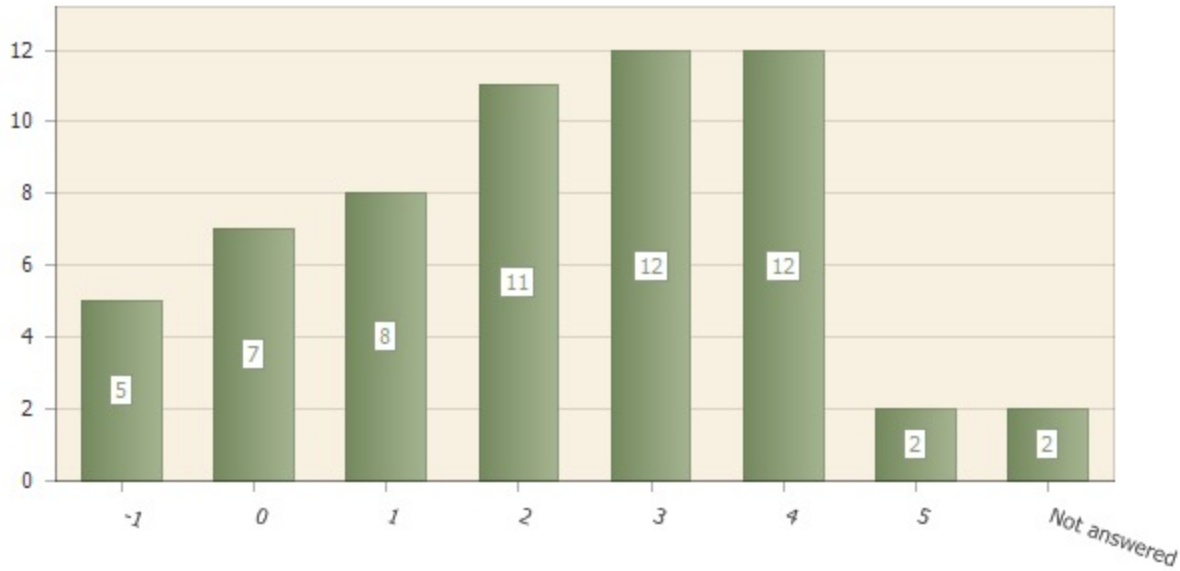
How would you rate the decision-making processes for course cancellations at Cañada?

Question type: Matrix & Multimatrix

Number of responses: 57

Number of respondents: 59

Scale: 0 (Very Unsatisfactory) – 5 (Very Satisfactory); -1: NA



Matrix row	Not answered	Mean	Std dev	Count and % Rating 0	Count and % Rating 1	Count and % Rating 2	Count and % Rating 3	Count and % Rating 4	Count and % Rating 5	NA option
rating	7 (11.9%)	2.4	1.4	7 (12.3%)	8 (14.0%)	11 (19.3%)	12 (21.1%)	12 (21.1%)	2 (3.5%)	5 (8.8%)

1.13. P4Q1

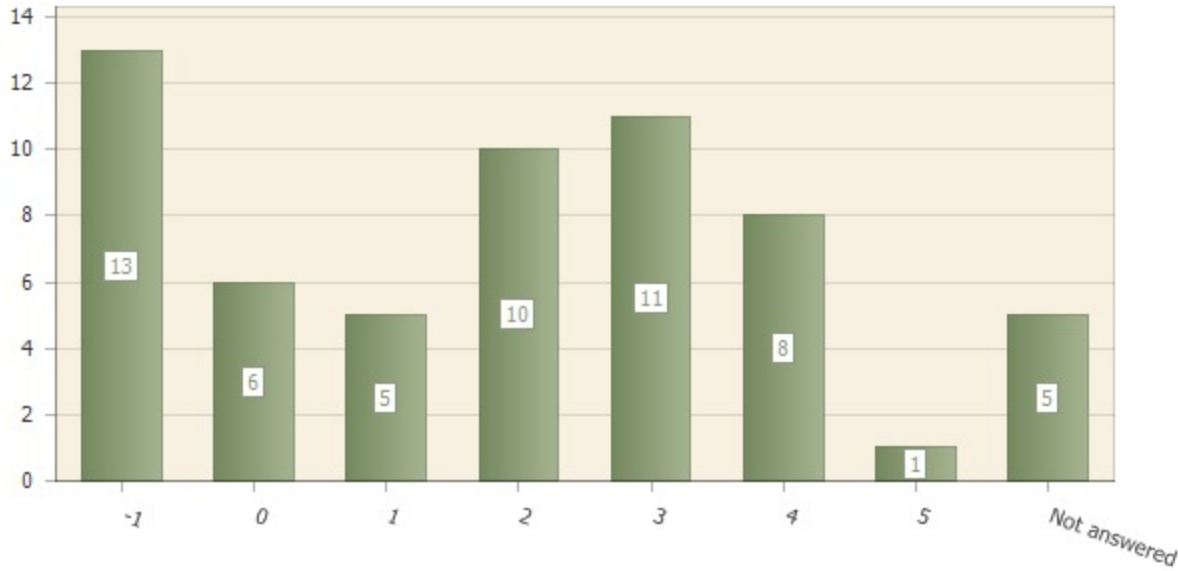
How would you rate the decision-making processes for college budgeting at Cañada?

Question type: Matrix & Multimatrix

Number of responses: 54

Number of respondents: 59

Scale: 0 (Very Unsatisfactory) – 5 (Very Satisfactory); -1: NA



Matrix row	Not answered	Mean	Std dev	Count and % Rating 0	Count and % Rating 1	Count and % Rating 2	Count and % Rating 3	Count and % Rating 4	Count and % Rating 5	NA option
rating	18 (30.5%)	2.3	1.4	6 (11.1%)	5 (9.3%)	10 (18.5%)	11 (20.4%)	8 (14.8%)	1 (1.9%)	13 (24.1%)

1.14. P4Q2

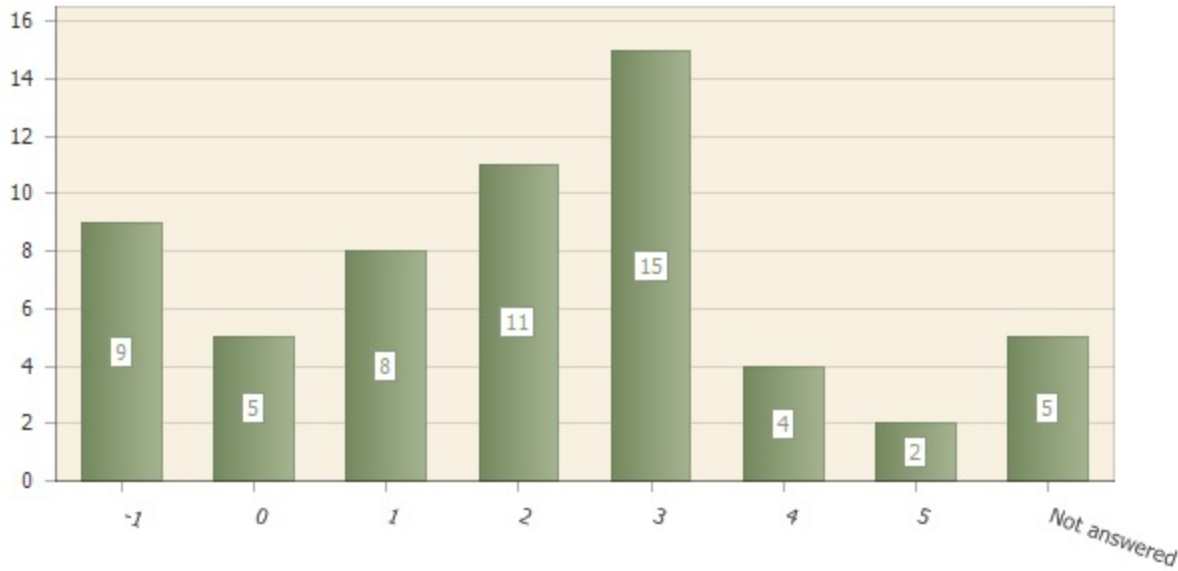
How would you rate the access faculty have to information concerning Cañada's budget?

Question type: Matrix & Multimatrix

Number of responses: 54

Number of respondents: 59

Scale: 0 (Very Unsatisfactory) – 5 (Very Satisfactory); -1: NA



Matrix row	Not answered	Mean	Std dev	Count and % Rating 0	Count and % Rating 1	Count and % Rating 2	Count and % Rating 3	Count and % Rating 4	Count and % Rating 5	NA option
rating	14 (23.7%)	2.2	1.3	5 (9.3%)	8 (14.8%)	11 (20.4%)	15 (27.8%)	4 (7.4%)	2 (3.7%)	9 (16.7%)

1.15. P4Q3

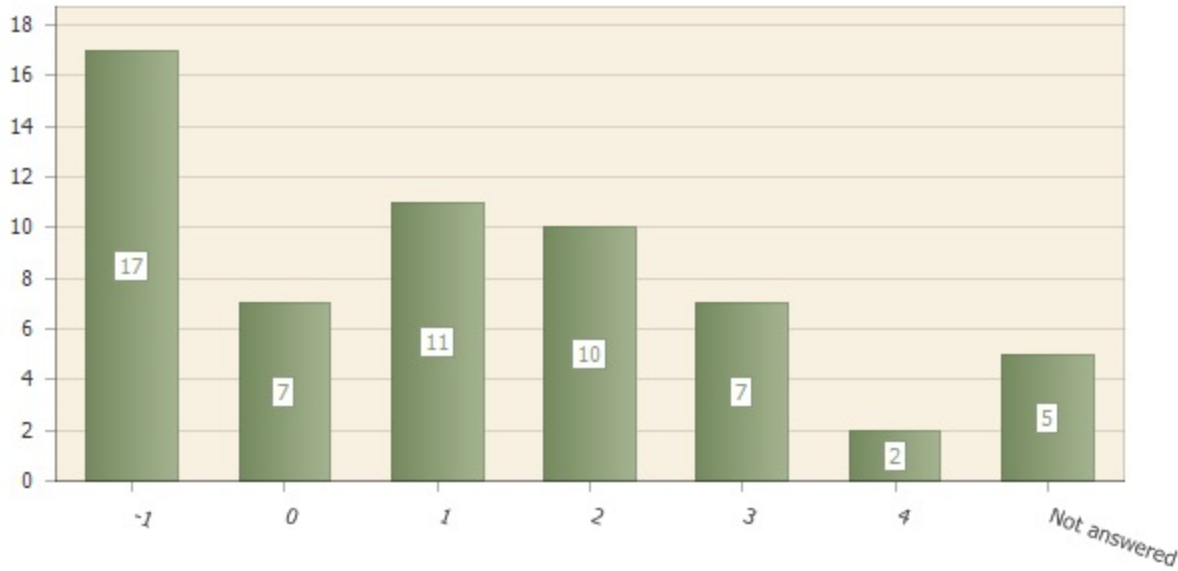
How would you rate the explanation for why some aspects of Cañada's budget are unavailable to faculty?

Question type: Matrix & Multimatrix

Number of responses: 54

Number of respondents: 59

Scale: 0 (Very Unsatisfactory) – 5 (Very Satisfactory); -1: NA



Matrix row	Not answered	Mean	Std dev	Count and % Rating 0	Count and % Rating 1	Count and % Rating 2	Count and % Rating 3	Count and % Rating 4	Count and % Rating 5	NA option
rating	22 (37.3%)	1.6	1.2	7 (13.0%)	11 (20.4%)	10 (18.5%)	7 (13.0%)	2 (3.7%)	0 (0%)	17 (31.5%)

1.18. P5Q1

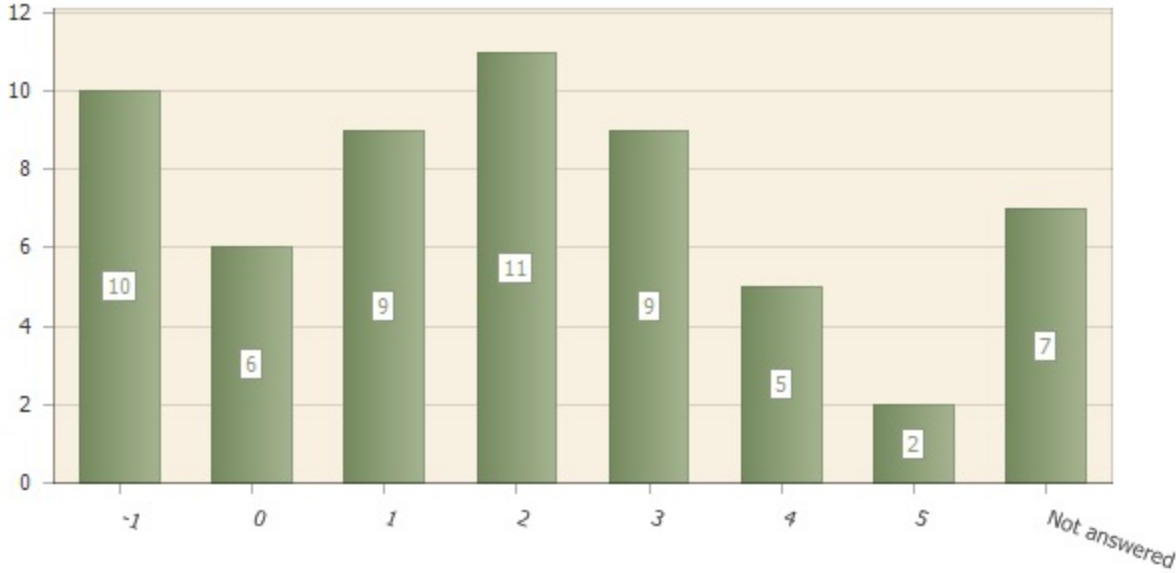
How would you rate institutional memory at Cañada?

Question type: Matrix & Multimatrix

Number of responses: 52

Number of respondents: 59

Scale: 0 (Very Unsatisfactory) – 5 (Very Satisfactory); -1: NA



Matrix row	Not answered	Mean	Std dev	Count and % Rating 0	Count and % Rating 1	Count and % Rating 2	Count and % Rating 3	Count and % Rating 4	Count and % Rating 5	NA option
rating	17 (28.8%)	2.1	1.4	6 (11.5%)	9 (17.3%)	11 (21.2%)	9 (17.3%)	5 (9.6%)	2 (3.8%)	10 (19.2%)

1.21. P6Q1

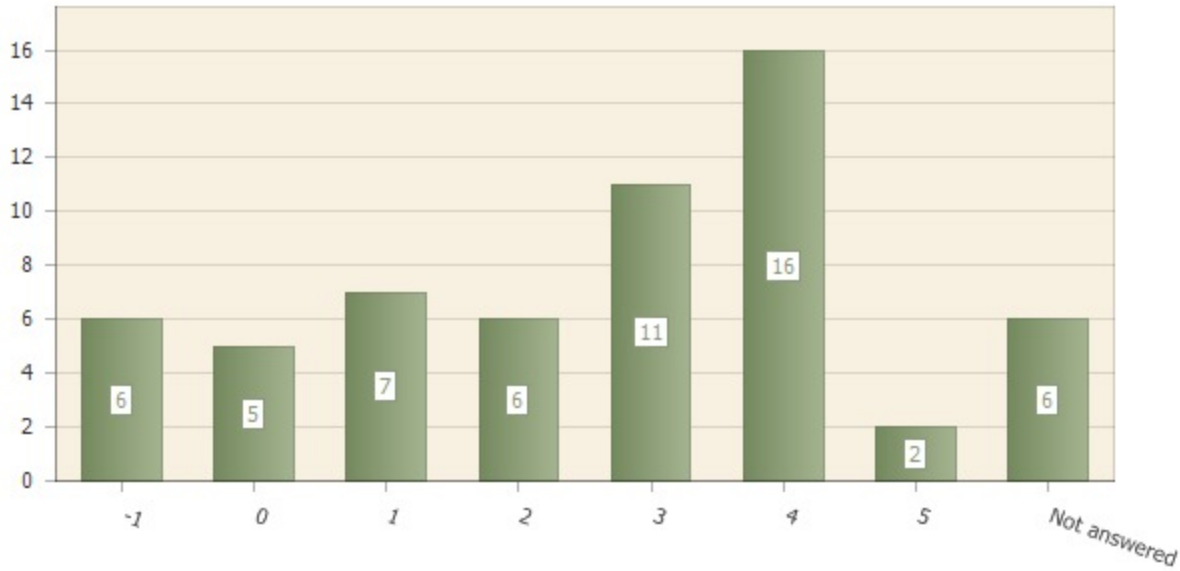
How would you rate the collegial working relationships between the President and faculty members at Cañada?

Question type: Matrix & Multimatrix

Number of responses: 53

Number of respondents: 59

Scale: 0 (Very Unsatisfactory) – 5 (Very Satisfactory); -1: NA



Matrix row	Not answered	Mean	Std dev	Count and % Rating 0	Count and % Rating 1	Count and % Rating 2	Count and % Rating 3	Count and % Rating 4	Count and % Rating 5	NA option
rating	12 (20.3%)	2.7	1.5	5 (9.4%)	7 (13.2%)	6 (11.3%)	11 (20.8%)	16 (30.2%)	2 (3.8%)	6 (11.3%)

1.22. P6Q2

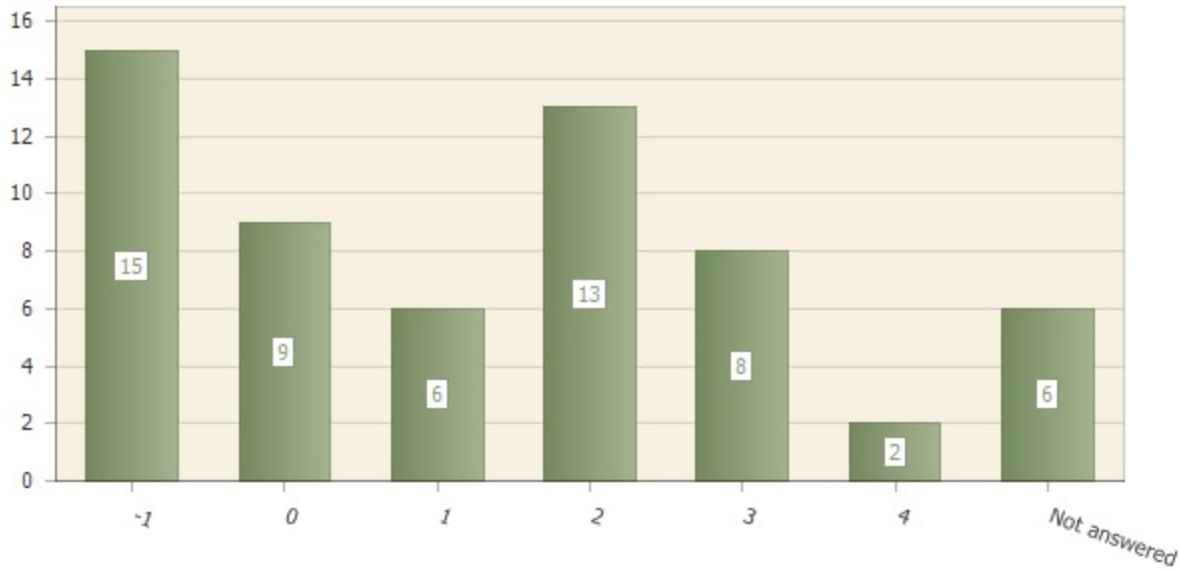
How would you rate the collegial working relationships between individual Vice Presidents and faculty members at Cañada?

Question type: Matrix & Multimatrix

Number of responses: 53

Number of respondents: 59

Scale: 0 (Very Unsatisfactory) – 5 (Very Satisfactory); -1: NA



Matrix row	Not answered	Mean	Std dev	Count and % Rating 0	Count and % Rating 1	Count and % Rating 2	Count and % Rating 3	Count and % Rating 4	Count and % Rating 5	NA option
rating	21 (35.6%)	1.7	1.2	9 (17.0%)	6 (11.3%)	13 (24.5%)	8 (15.1%)	2 (3.8%)	0 (0%)	15 (28.3%)

1.23. P6Q3

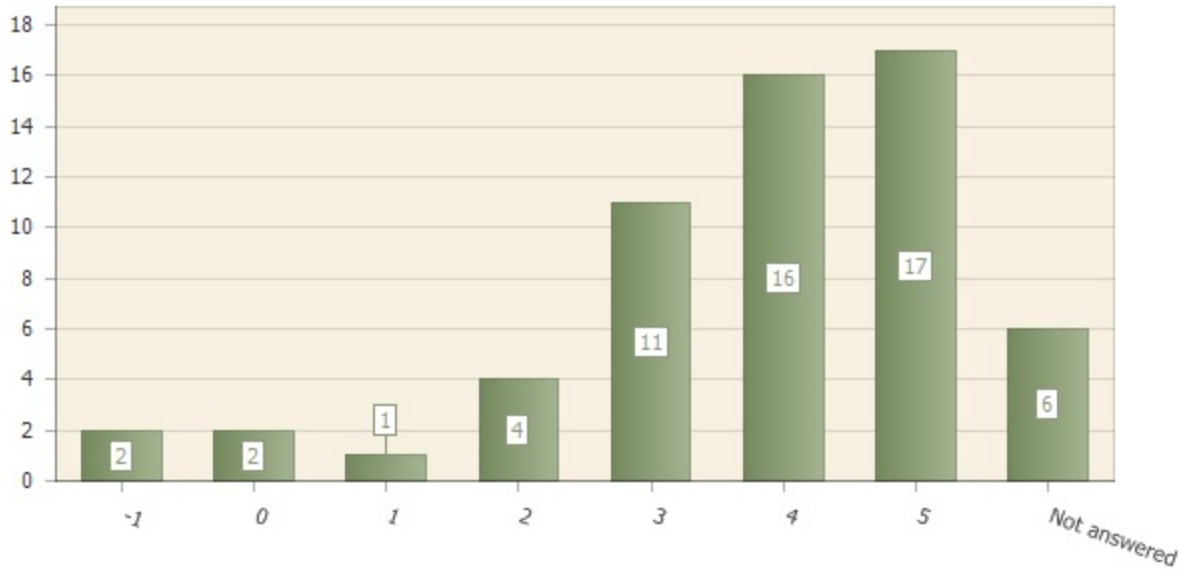
How would you rate the collegial working relationships between individual Deans and faculty members at Cañada?

Question type: Matrix & Multimatrix

Number of responses: 53

Number of respondents: 59

Scale: 0 (Very Unsatisfactory) – 5 (Very Satisfactory); -1: NA



Matrix row	Not answered	Mean	Std dev	Count and % Rating 0	Count and % Rating 1	Count and % Rating 2	Count and % Rating 3	Count and % Rating 4	Count and % Rating 5	NA option
rating	8 (13.6%)	3.7	1.3	2 (3.8%)	1 (1.9%)	4 (7.5%)	11 (20.8%)	16 (30.2%)	17 (32.1%)	2 (3.8%)

1.24. P6Q4

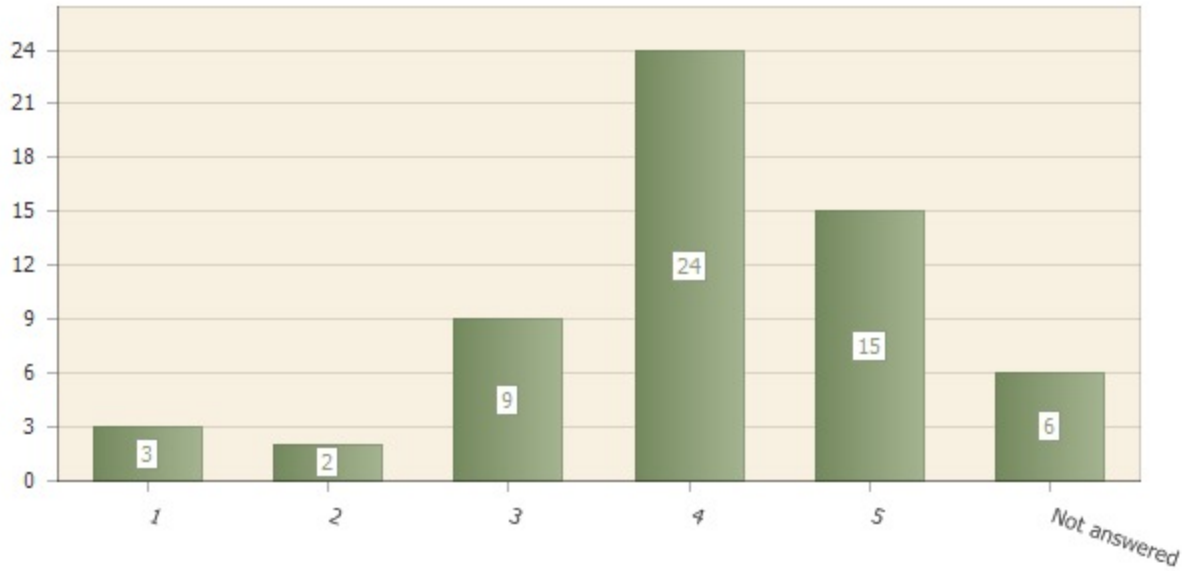
How would you rate the collegial working relationships between individual faculty members at Cañada?

Question type: Matrix & Multimatrix

Number of responses: 53

Number of respondents: 59

Scale: 0 (Very Unsatisfactory) – 5 (Very Satisfactory); -1: NA



Matrix row	Not answered	Mean	Std dev	Count and % Rating 0	Count and % Rating 1	Count and % Rating 2	Count and % Rating 3	Count and % Rating 4	Count and % Rating 5	NA option
rating	6 (10.2%)	3.9	1.1	0 (0%)	3 (5.7%)	2 (3.8%)	9 (17.0%)	24 (45.3%)	15 (28.3%)	0 (0%)

1.25. P6Q5

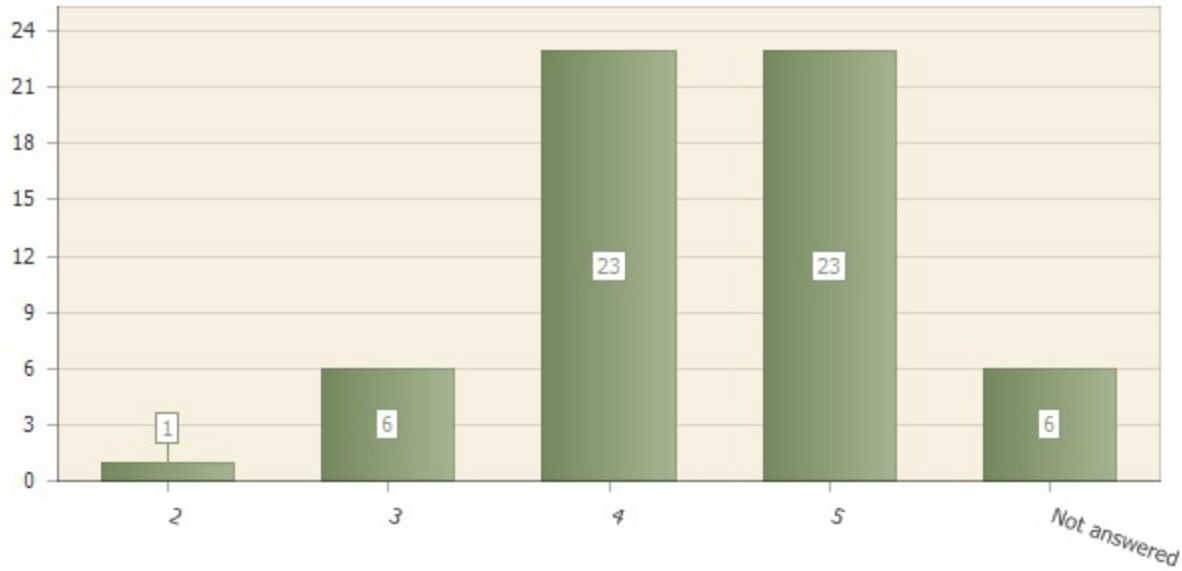
How would you rate collegial working relationships between the staff and faculty members at Cañada?

Question type: Matrix & Multimatrix

Number of responses: 53

Number of respondents: 59

Scale: 0 (Very Unsatisfactory) – 5 (Very Satisfactory); -1: NA



Matrix row	Not answered	Mean	Std dev	Count and % Rating 0	Count and % Rating 1	Count and % Rating 2	Count and % Rating 3	Count and % Rating 4	Count and % Rating 5	NA option
rating	6 (10.2%)	4.3	0.7	0 (0%)	0 (0%)	1 (1.9%)	6 (11.3%)	23 (43.4%)	23 (43.4%)	0 (0%)

1.28. P7Q1

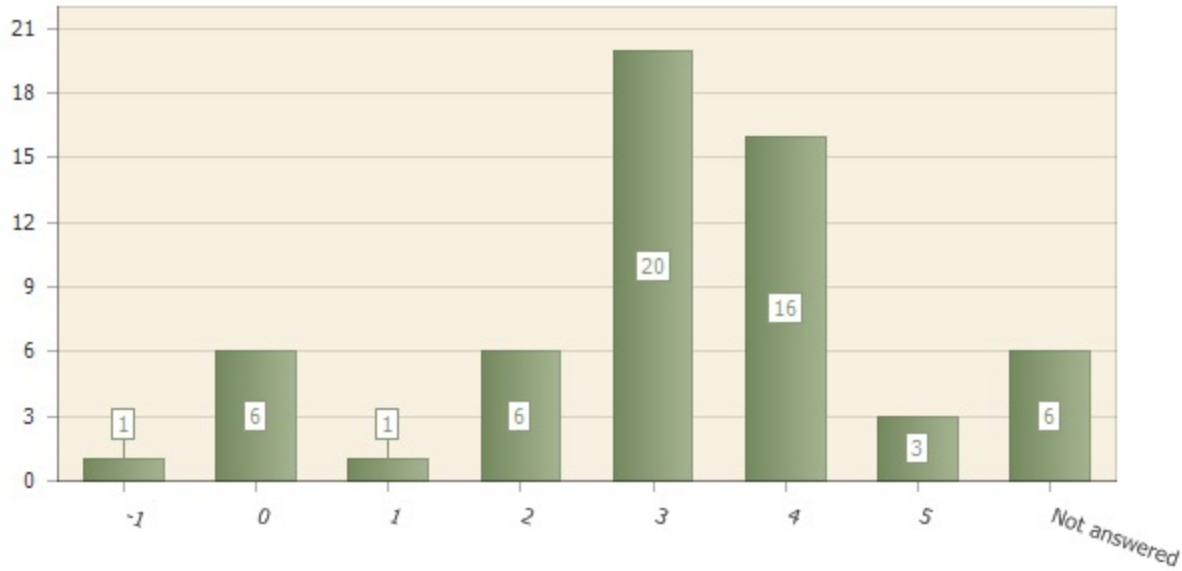
How do you rate the support faculty receive at Cañada?

Question type: Matrix & Multimatrix

Number of responses: 53

Number of respondents: 59

Scale: 0 (Very Unsatisfactory) – 5 (Very Satisfactory); -1: NA



Matrix row	Not answered	Mean	Std dev	Count and % Rating 0	Count and % Rating 1	Count and % Rating 2	Count and % Rating 3	Count and % Rating 4	Count and % Rating 5	NA option
rating	7 (11.9%)	2.9	1.3	6 (11.3%)	1 (1.9%)	6 (11.3%)	20 (37.7%)	16 (30.2%)	3 (5.7%)	1 (1.9%)

1.29. P7Q2

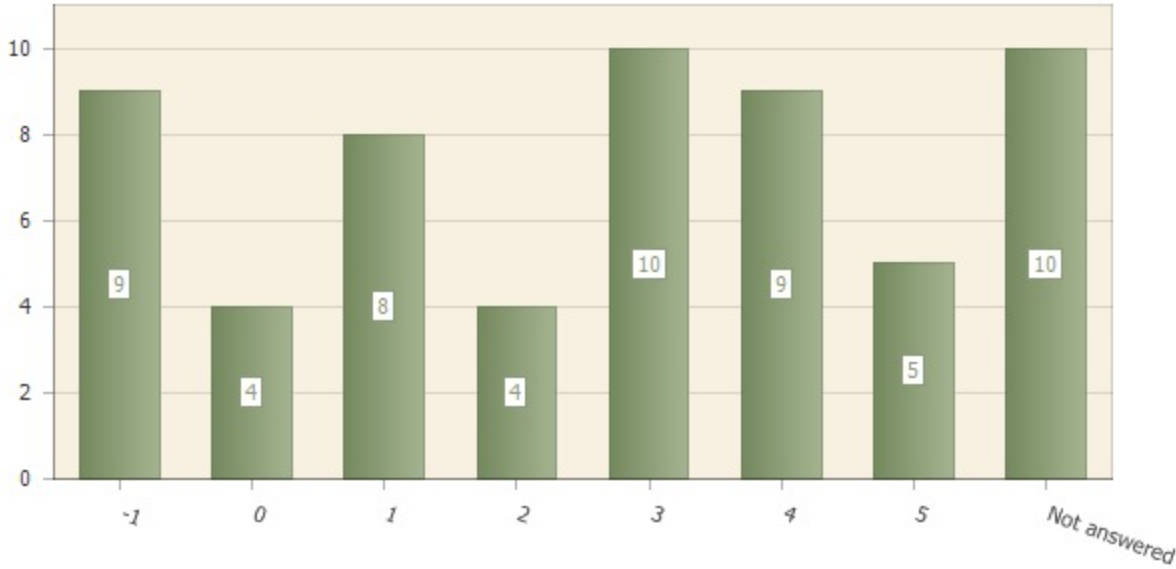
How would you rate the support you receive from the President?

Question type: Matrix & Multimatrix

Number of responses: 49

Number of respondents: 59

Scale: 0 (Very Unsatisfactory) – 5 (Very Satisfactory); -1: NA



Matrix row	Not answered	Mean	Std dev	Count and % Rating 0	Count and % Rating 1	Count and % Rating 2	Count and % Rating 3	Count and % Rating 4	Count and % Rating 5	NA option
rating	19 (32.2%)	2.7	1.6	4 (8.2%)	8 (16.3%)	4 (8.2%)	10 (20.4%)	9 (18.4%)	5 (10.2%)	9 (18.4%)

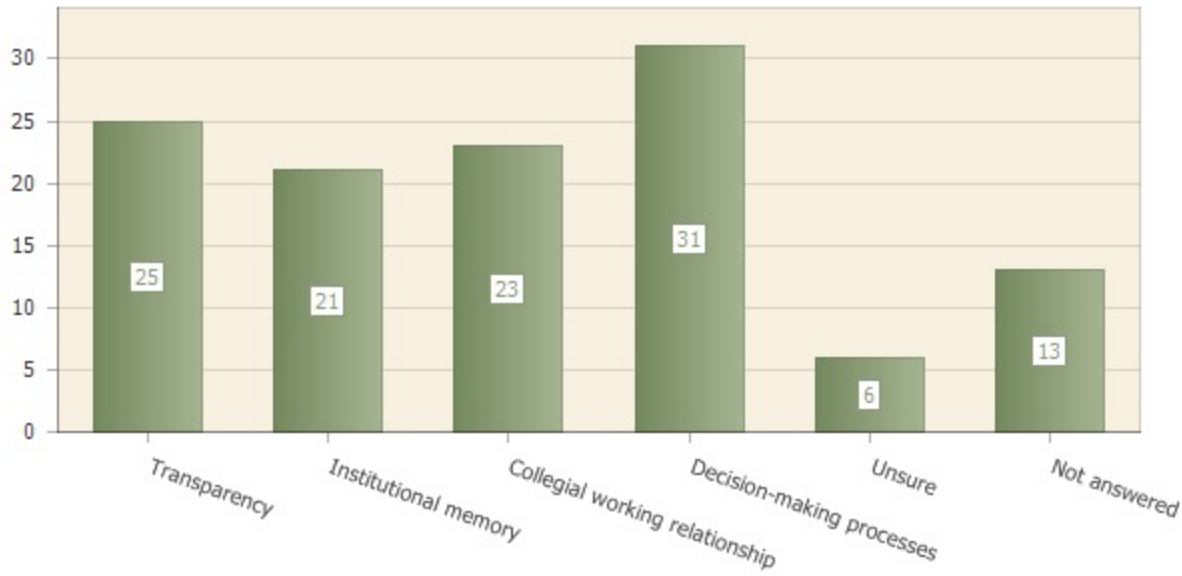
1.30. P7Q3

Which of the following factors should be addressed in order to improve support from the President? Check all that apply.

Question type: Multiple choice

Number of responses: 46

Number of respondents: 59



Answer	Count	Percent answer
Transparency	25	42.4%
Institutional memory	21	35.6%
Collegial working relationship	23	39.0%
Decision-making processes	31	52.5%
Unsure	6	10.2%
Not answered	13	22.0%

1.32. P8Q1

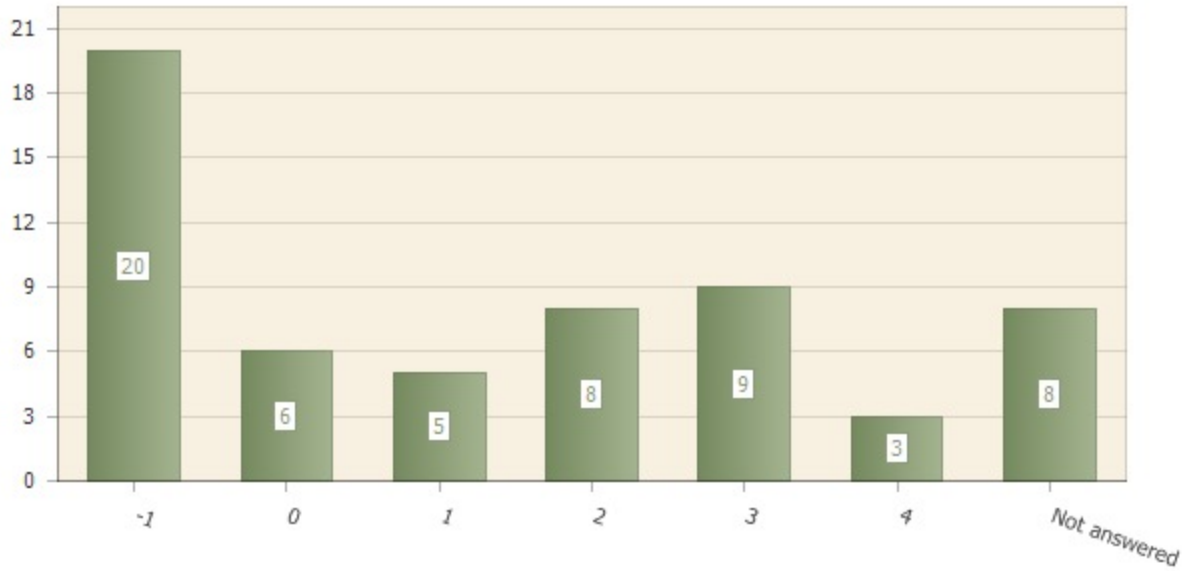
How would you rate the support you receive from the Vice Presidents?

Question type: Matrix & Multimatrix

Number of responses: 51

Number of respondents: 59

Scale: 0 (Very Unsatisfactory) – 5 (Very Satisfactory); -1: NA



Matrix row	Not answered	Mean	Std dev	Count and % Rating 0	Count and % Rating 1	Count and % Rating 2	Count and % Rating 3	Count and % Rating 4	Count and % Rating 5	NA option
rating	28 (47.5%)	1.9	1.3	6 (11.8%)	5 (9.8%)	8 (15.7%)	9 (17.6%)	3 (5.9%)	0 (0%)	20 (39.2%)

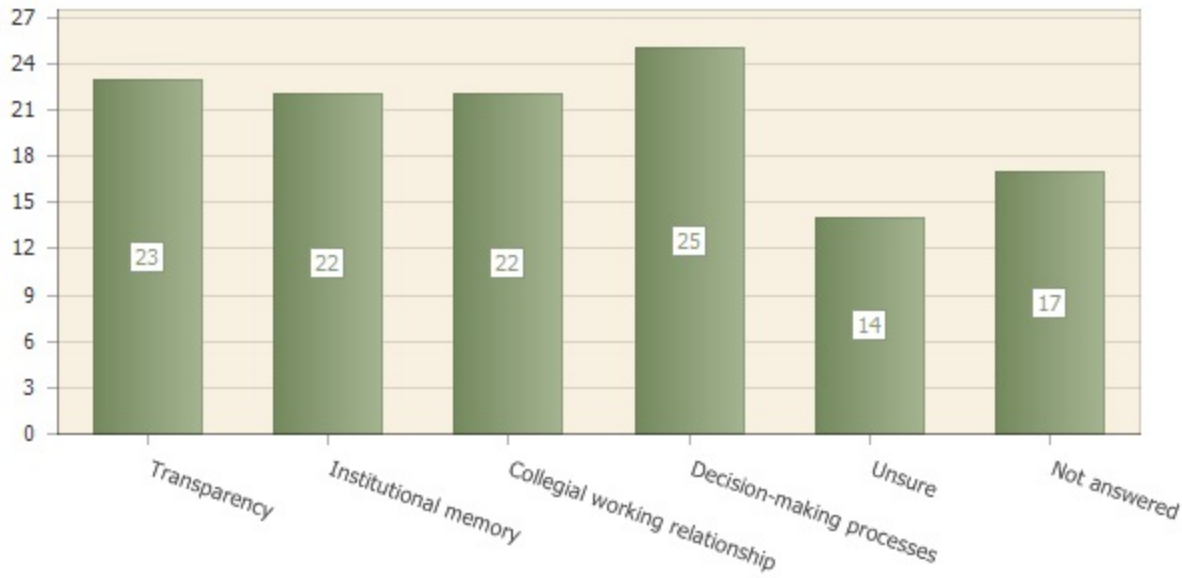
1.33. P8Q2

Which of the following factors should be addressed in order to improve support from the Vice Presidents? Check all that apply.

Question type: Multiple choice

Number of responses: 42

Number of respondents: 59



Answer	Count	Percent answer
Transparency	23	39.0%
Institutional memory	22	37.3%
Collegial working relationship	22	37.3%
Decision-making processes	25	42.4%
Unsure	14	23.7%
Not answered	17	28.8%

1.35. P9Q1

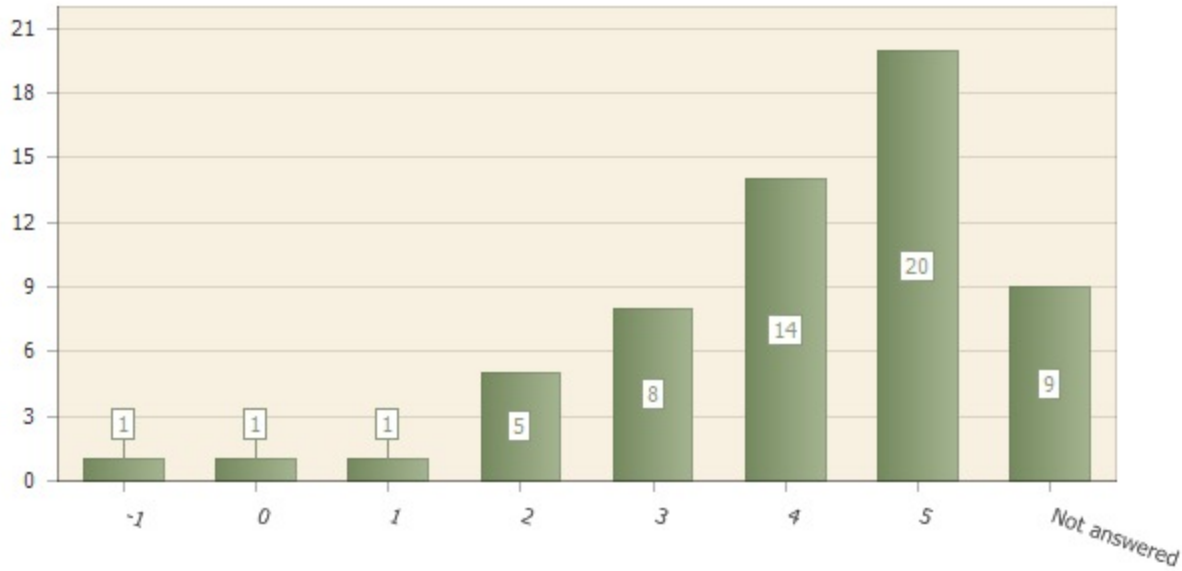
How would you rate the support you receive from your Dean?

Question type: Matrix & Multimatrix

Number of responses: 50

Number of respondents: 59

Scale: 0 (Very Unsatisfactory) – 5 (Very Satisfactory); -1: NA



Matrix row	Not answered	Mean	Std dev	Count and % Rating 0	Count and % Rating 1	Count and % Rating 2	Count and % Rating 3	Count and % Rating 4	Count and % Rating 5	NA option
rating	10 (16.9%)	3.9	1.2	1 (2.0%)	1 (2.0%)	5 (10.0%)	8 (16.0%)	14 (28.0%)	20 (40.0%)	1 (2.0%)

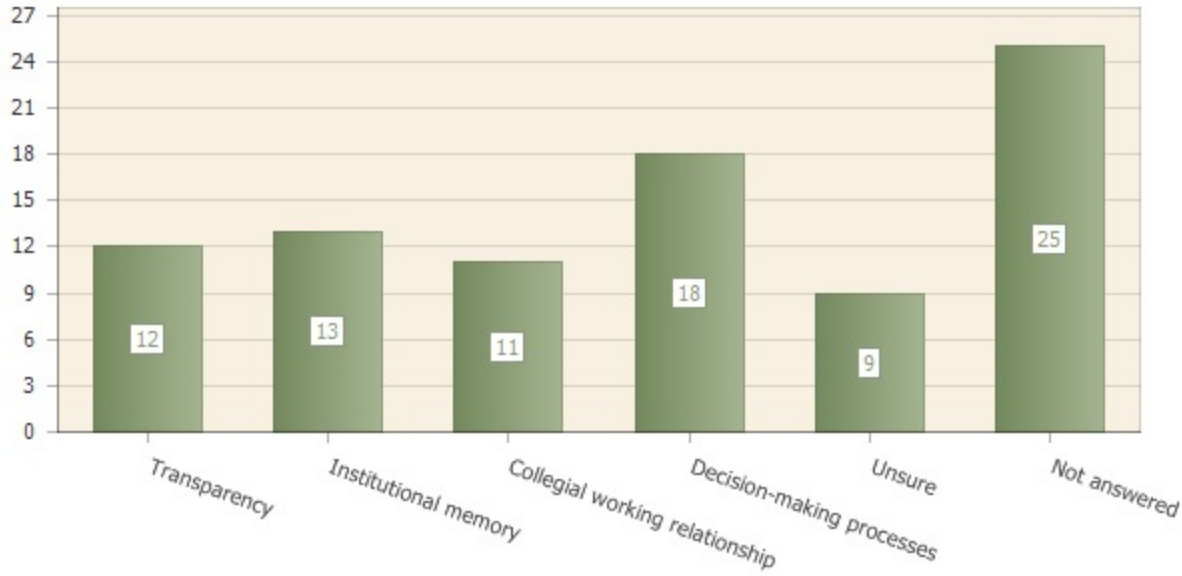
1.36. P9Q2

Which of the following factors should be addressed in order to improve support from your Dean? Check all that apply.

Question type: Multiple choice

Number of responses: 34

Number of respondents: 59



Answer	Count	Percent answer
Transparency	12	20.3%
Institutional memory	13	22.0%
Collegial working relationship	11	18.6%
Decision-making processes	18	30.5%
Unsure	9	15.3%
Not answered	25	42.4%

1.38. P10Q1

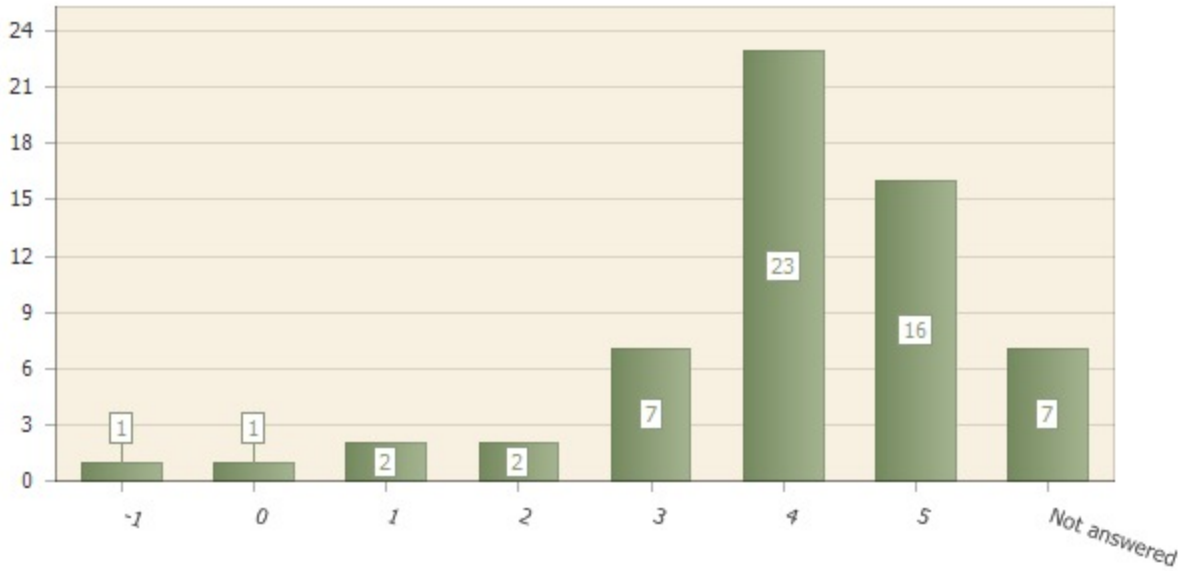
How would you rate the support you receive from other faculty members?

Question type: Matrix & Multimatrix

Number of responses: 52

Number of respondents: 59

Scale: 0 (Very Unsatisfactory) – 5 (Very Satisfactory); -1: NA



Matrix row	Not answered	Mean	Std dev	Count and % Rating 0	Count and % Rating 1	Count and % Rating 2	Count and % Rating 3	Count and % Rating 4	Count and % Rating 5	NA option
rating	8 (13.6%)	3.9	1.1	1 (1.9%)	2 (3.8%)	2 (3.8%)	7 (13.5%)	23 (44.2%)	16 (30.8%)	1 (1.9%)

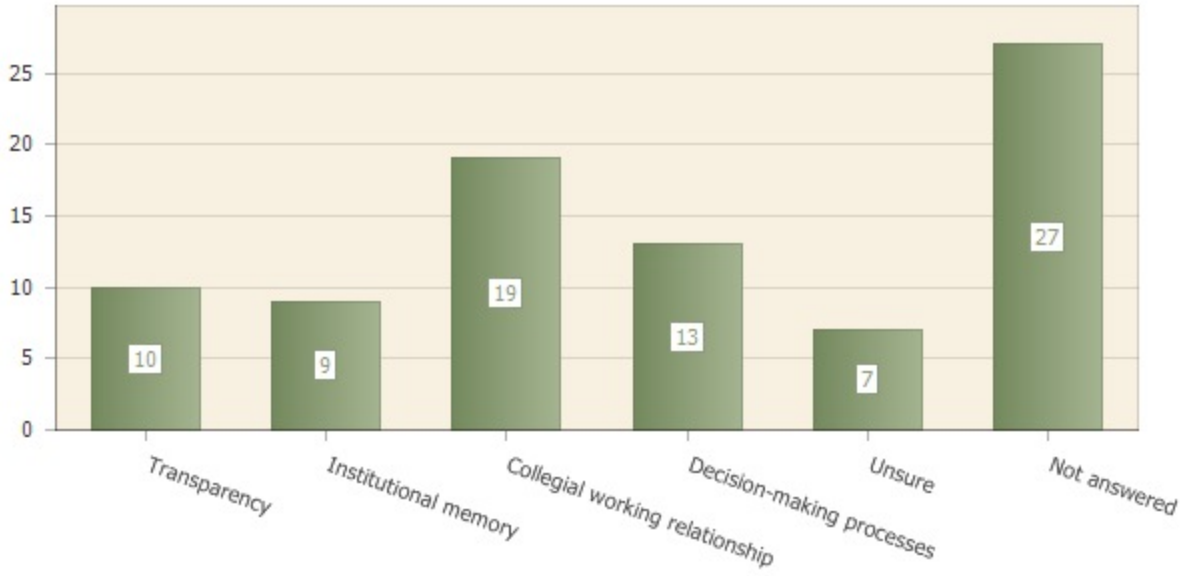
1.39. P10Q2

Which of the following factors should be addressed in order to improve support from other faculty members? Check all that apply.

Question type: Multiple choice

Number of responses: 32

Number of respondents: 59



Answer	Count	Percent answer
Transparency	10	16.9%
Institutional memory	9	15.3%
Collegial working relationship	19	32.2%
Decision-making processes	13	22.0%
Unsure	7	11.9%
Not answered	27	45.8%

1.42. P11Q1

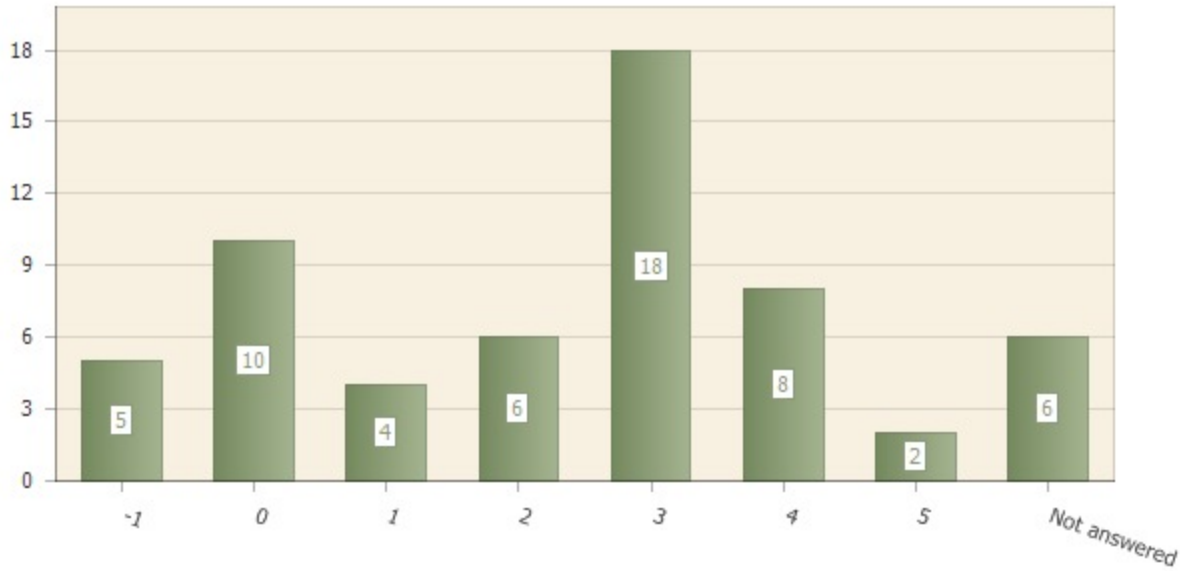
How would you rate hiring procedures at Cañada?

Question type: Matrix & Multimatrix

Number of responses: 53

Number of respondents: 59

Scale: 0 (Very Unsatisfactory) – 5 (Very Satisfactory); -1: NA



Matrix row	Not answered	Mean	Std dev	Count and % Rating 0	Count and % Rating 1	Count and % Rating 2	Count and % Rating 3	Count and % Rating 4	Count and % Rating 5	NA option
rating	11 (18.6%)	2.3	1.5	10 (18.9%)	4 (7.5%)	6 (11.3%)	18 (34.0%)	8 (15.1%)	2 (3.8%)	5 (9.4%)

1.43. P11Q2

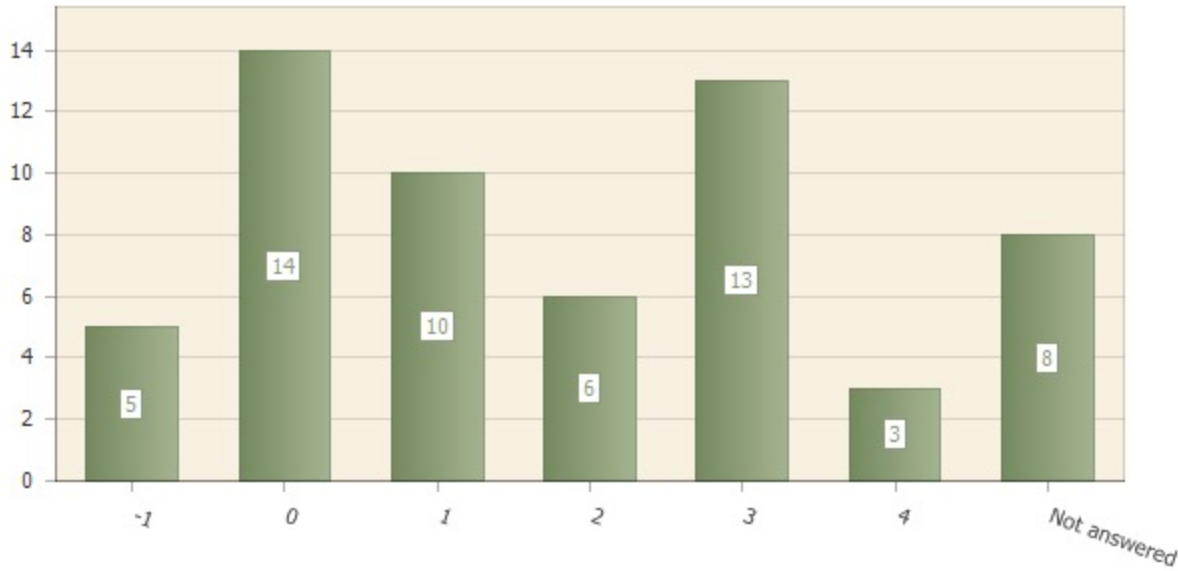
How would you rank the appropriateness for Vice Presidents or higher-ranking administrators to be involved in the first round of meetings and interviews of hiring committees?

Question type: Matrix & Multimatrix

Number of responses: 51

Number of respondents: 59

Scale: 0 (Not appropriate) – 5 (Appropriate); -1: NA



Matrix row	Not answered	Mean	Std dev	Count and % Rating 0	Count and % Rating 1	Count and % Rating 2	Count and % Rating 3	Count and % Rating 4	Count and % Rating 5	NA option
rating	13 (22.0%)	1.6	1.4	14 (27.5%)	10 (19.6%)	6 (11.8%)	13 (25.5%)	3 (5.9%)	0 (0%)	5 (9.8%)

1.44. P11Q3

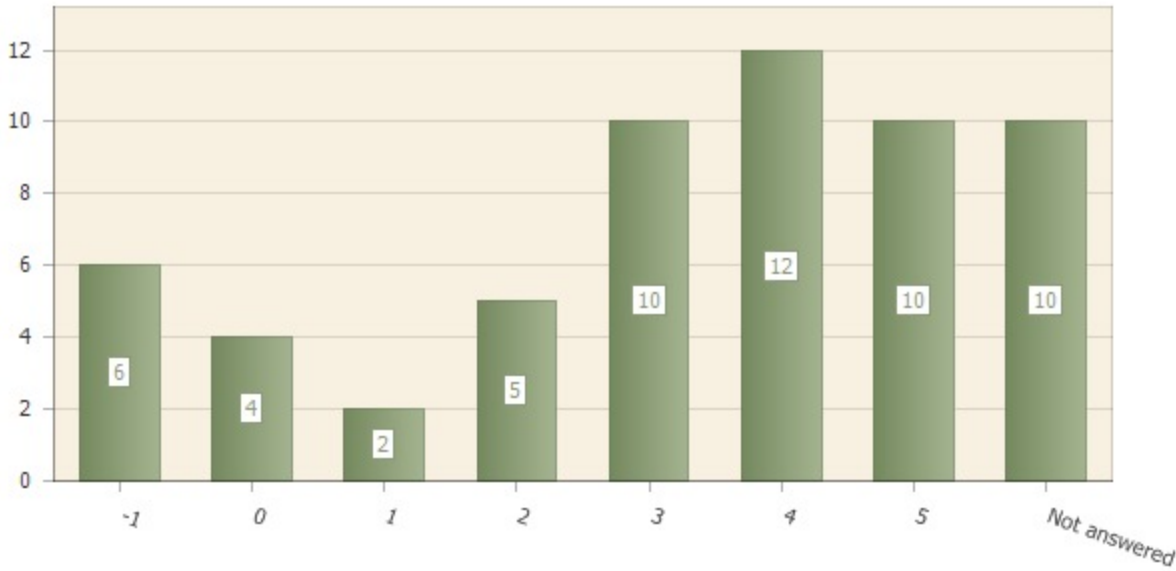
How would you rank the issue of hiring priorities at Cañada?

Question type: Matrix & Multimatrix

Number of responses: 49

Number of respondents: 59

Scale: 0 (Note an issue) – 5 (Extremely urgent); -1: NA



Matrix row	Not answered	Mean	Std dev	Count and % Rating 0	Count and % Rating 1	Count and % Rating 2	Count and % Rating 3	Count and % Rating 4	Count and % Rating 5	NA option
rating	16 (27.1%)	3.3	1.5	4 (8.2%)	2 (4.1%)	5 (10.2%)	10 (20.4%)	12 (24.5%)	10 (20.4%)	6 (12.2%)