

1.

1.1. P2Q1

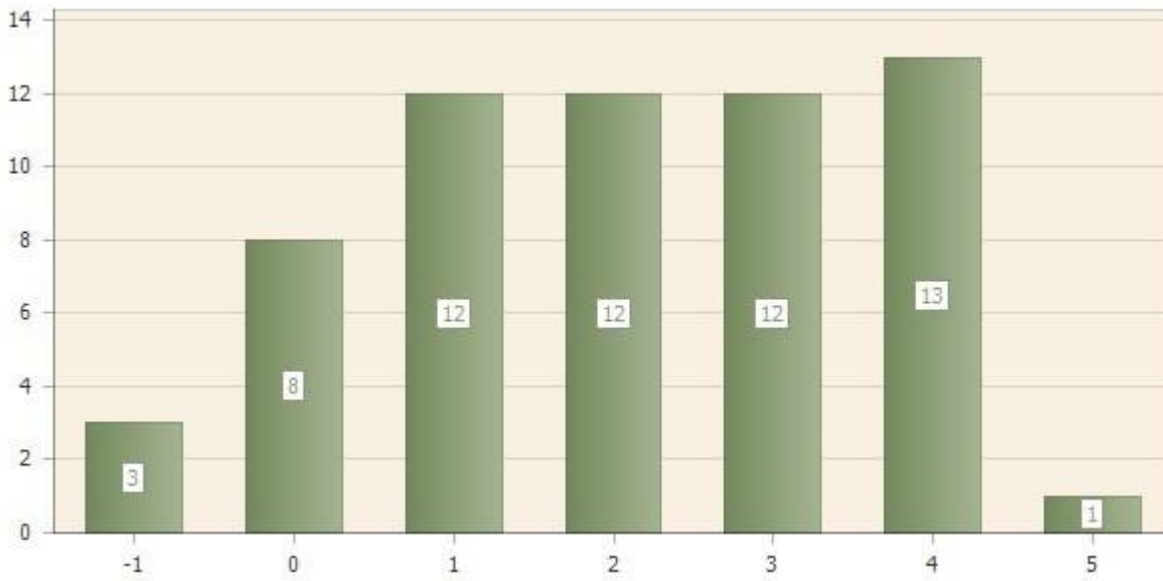
How would you rate transparency at Cañada?

Question type: Matrix & Multimatrix

Number of responses: 61

Number of respondents: 61

Scale: 0 (Very Unsatisfactory) – 5 (Very Satisfactory); -1: NO OPINION/ UNSURE



Matrix row	Mean	Std dev	Count and % Rating 0	Count and % Rating 1	Count and % Rating 2	Count and % Rating 3	Count and % Rating 4	Count and % Rating 5	NO OPINION/ UNSURE
rating	2.2	1.4	8 (13.1%)	12 (19.7%)	12 (19.7%)	12 (19.7%)	13 (21.3%)	1 (1.6%)	3 (4.9%)

1.2. P2Q2

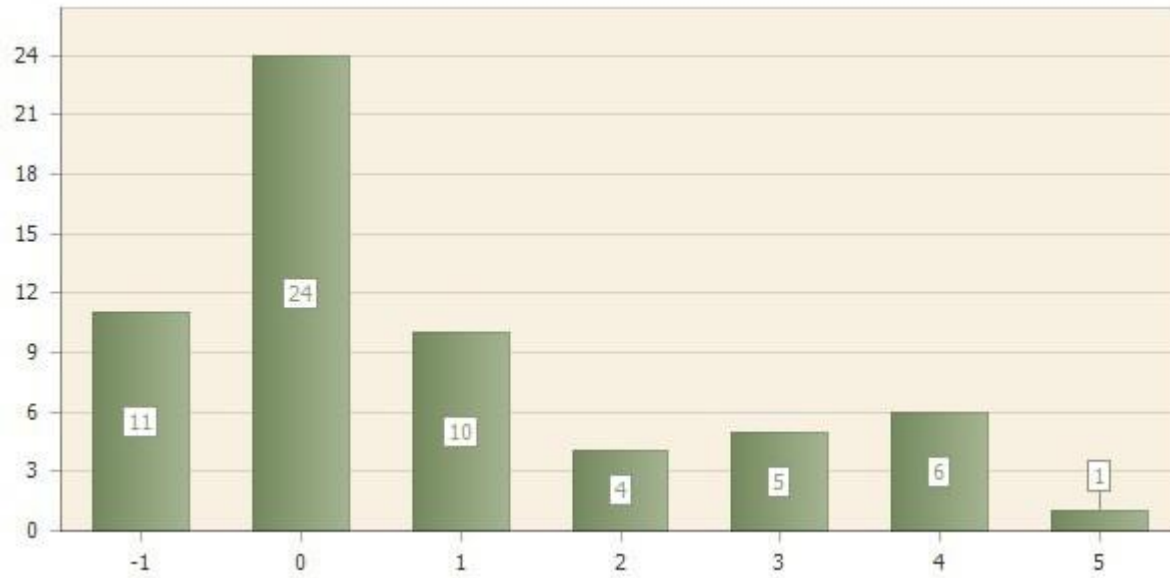
How well are faculty and staff included in the evaluation process for campus administrators?

Question type: Matrix & Multimatrix

Number of responses: 61

Number of respondents: 61

Scale: 0 (Very Unsatisfactory) – 5 (Very Satisfactory); -1: NO OPINION/ UNSURE



Matrix row	Mean	Std dev	Count and % Rating 0	Count and % Rating 1	Count and % Rating 2	Count and % Rating 3	Count and % Rating 4	Count and % Rating 5	NO OPINION/ UNSURE
rating	1.2	1.5	24 (39.3%)	10 (16.4%)	4 (6.6%)	5 (8.2%)	6 (9.8%)	1 (1.6%)	11 (18.0%)

1.3. P2Q3

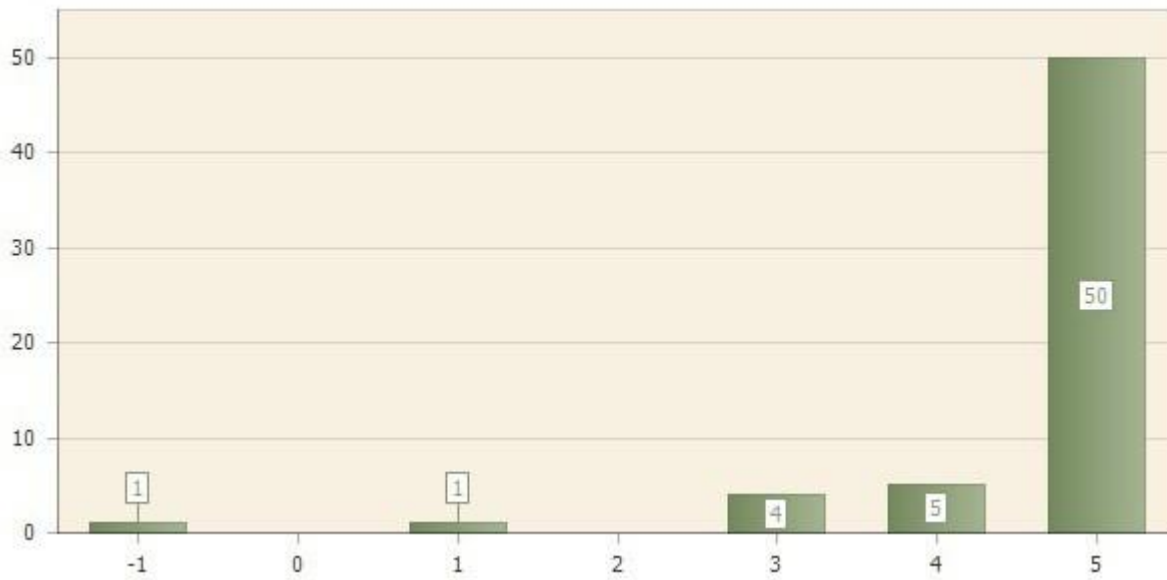
How important is it for campus administrators to be evaluated ANONYMOUSLY by faculty and staff?

Question type: Matrix & Multimatrix

Number of responses: 61

Number of respondents: 61

Scale: 0 (Not important) – 5 (Very important); -1: NO OPINION/ UNSURE



Matrix row	Mean	Std dev	Count and % Rating 0	Count and % Rating 1	Count and % Rating 2	Count and % Rating 3	Count and % Rating 4	Count and % Rating 5	NO OPINION/ UNSURE
rating	4.7	0.7	0 (0%)	1 (1.6%)	0 (0%)	4 (6.6%)	5 (8.2%)	50 (82.0%)	1 (1.6%)

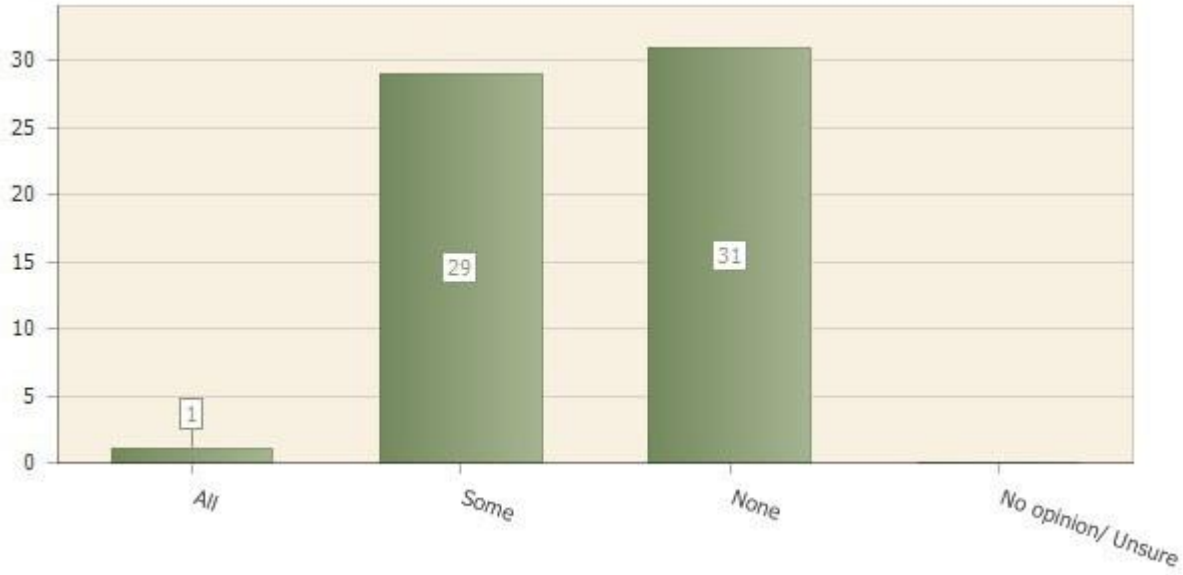
1.4. P2Q4

Should campus administrators be able to select all, some, or none of their own evaluators?

Question type: Multiple choice

Number of responses: 61

Number of respondents: 61



Answer	Count	Percent answer
All	1	1.6%
Some	29	47.5%
None	31	50.8%
No opinion/ Unsure	0	0%

1.5. P2Q5

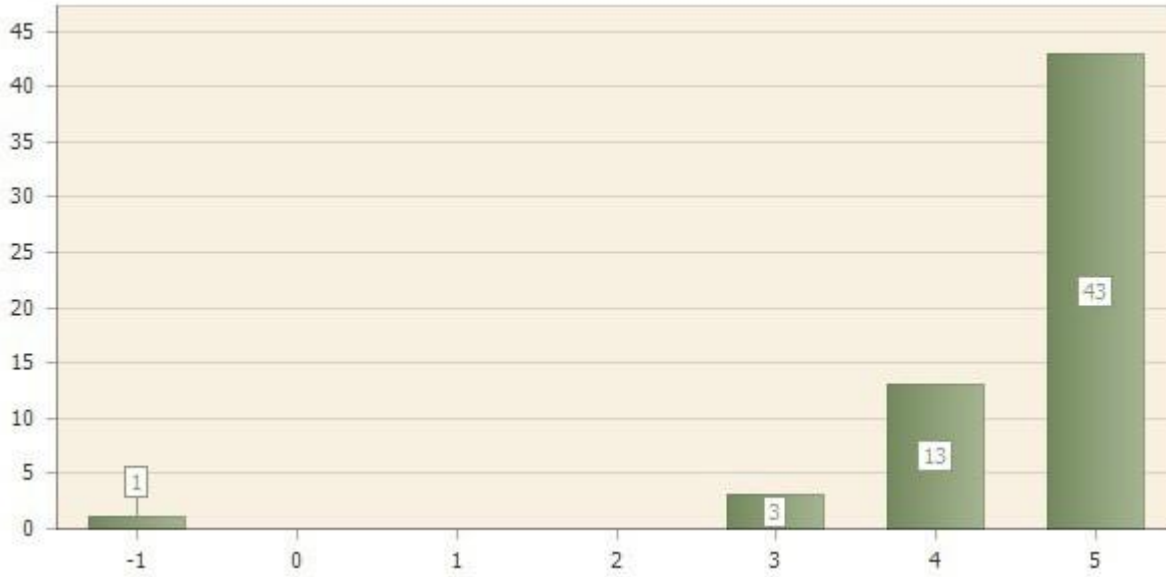
How important is it for ALL faculty and staff to have the option of evaluating their Dean, Vice Presidents, and President?

Question type: Matrix & Multimatrix

Number of responses: 60

Number of respondents: 61

Scale: 0 (Not important) – 5 (Very important); -1: NO OPINION/ UNSURE



Matrix row	Mean	Std dev	Count and % Rating 0	Count and % Rating 1	Count and % Rating 2	Count and % Rating 3	Count and % Rating 4	Count and % Rating 5	NO OPINION/ UNSURE
rating	4.7	0.6	0 (0%)	0 (0%)	0 (0%)	3 (5.0%)	13 (21.7%)	43 (71.7%)	1 (1.7%)

1.6. P3Q1

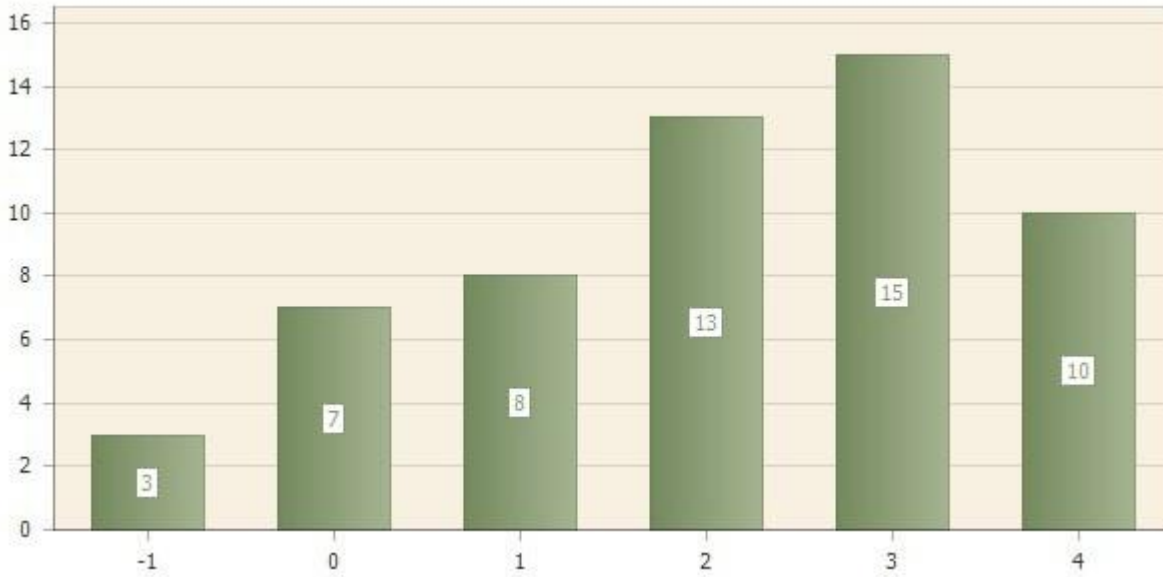
How would you rate the decision-making processes at Cañada?

Question type: Matrix & Multimatrix

Number of responses: 56

Number of respondents: 61

Scale: 0 (Very Unsatisfactory) – 5 (Very Satisfactory); -1: NO OPINION/ UNSURE



Matrix row	Mean	Std dev	Count and % Rating 0	Count and % Rating 1	Count and % Rating 2	Count and % Rating 3	Count and % Rating 4	Count and % Rating 5	NO OPINION/ UNSURE
rating	2.2	1.3	7 (12.5%)	8 (14.3%)	13 (23.2%)	15 (26.8%)	10 (17.9%)	0 (0%)	3 (5.4%)

1.7. P3Q2

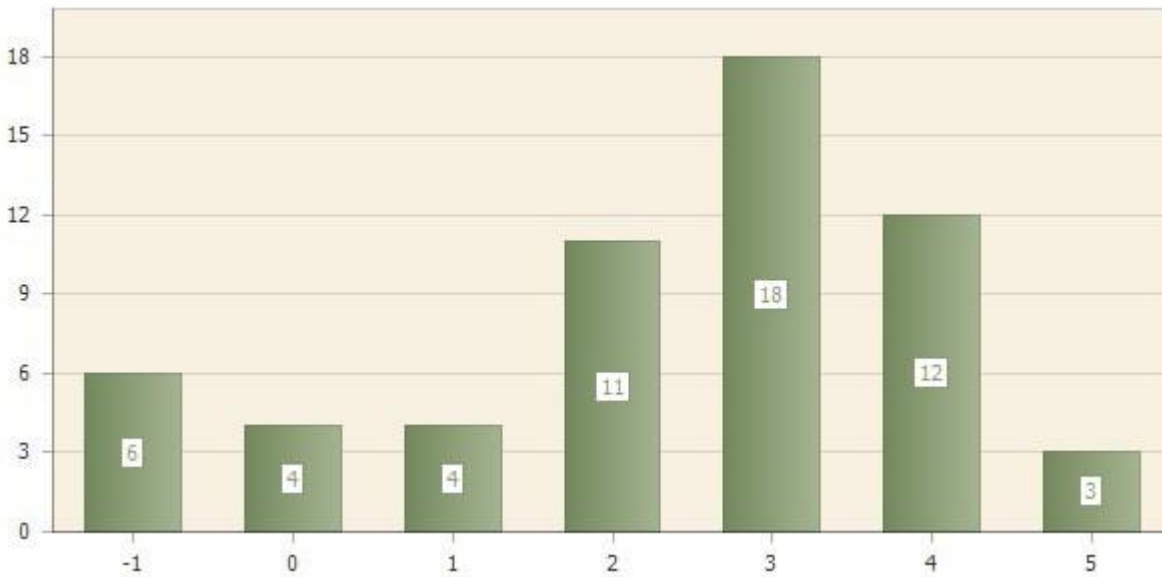
How would you rate the decision-making processes for course offerings at Cañada?

Question type: Matrix & Multimatrix

Number of responses: 58

Number of respondents: 61

Scale: 0 (Very Unsatisfactory) –5 (Very Satisfactory); -1: NO OPINION/ UNSURE



Matrix row	Mean	Std dev	Count and % Rating 0	Count and % Rating 1	Count and % Rating 2	Count and % Rating 3	Count and % Rating 4	Count and % Rating 5	NO OPINION/ UNSURE
rating	2.8	1.3	4 (6.9%)	4 (6.9%)	11 (19.0%)	18 (31.0%)	12 (20.7%)	3 (5.2%)	6 (10.3%)

1.8. P3Q3

How would you rate the decision-making processes for course cancellations at Cañada?

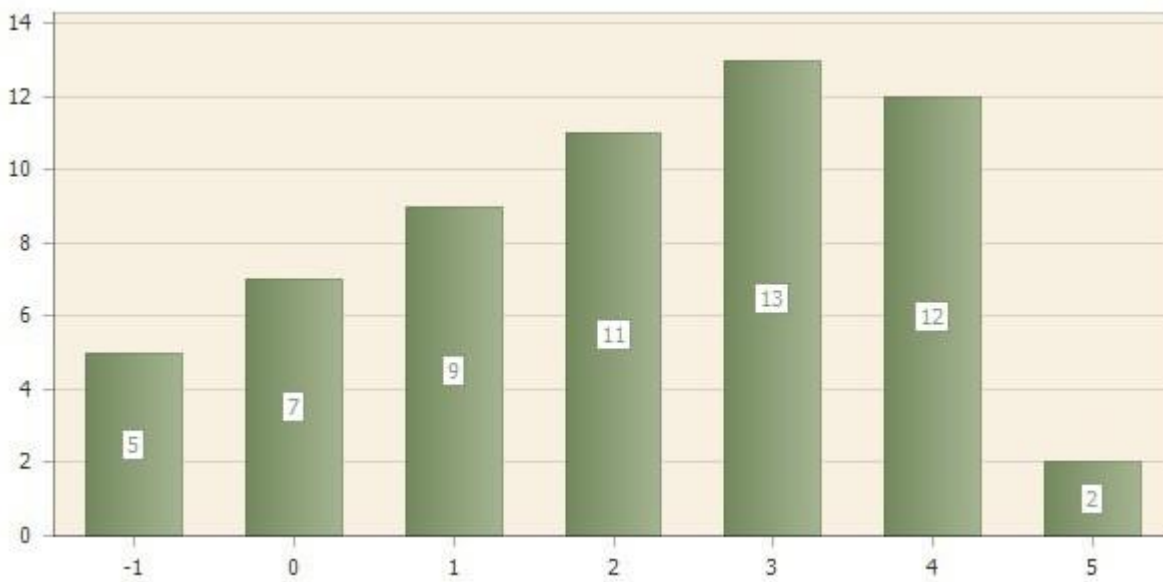
Question type: Matrix & Multimatrix

Number of responses: 59

Number of respondents: 61

Scale: 0 (Very Unsatisfactory) – 5 (Very Satisfactory); -1: NO OPINION/ UNSURE

Matrix row	Mean	Std dev	Count and % Rating 0	Count and % Rating 1	Count and % Rating 2	Count and % Rating 3	Count and % Rating 4	Count and % Rating 5	NO OPINION/ UNSURE
rating	2.4	1.4	7 (11.9%)	9 (15.3%)	11 (18.6%)	13 (22.0%)	12 (20.3%)	2 (3.4%)	5 (8.5%)



1.9. P4Q1

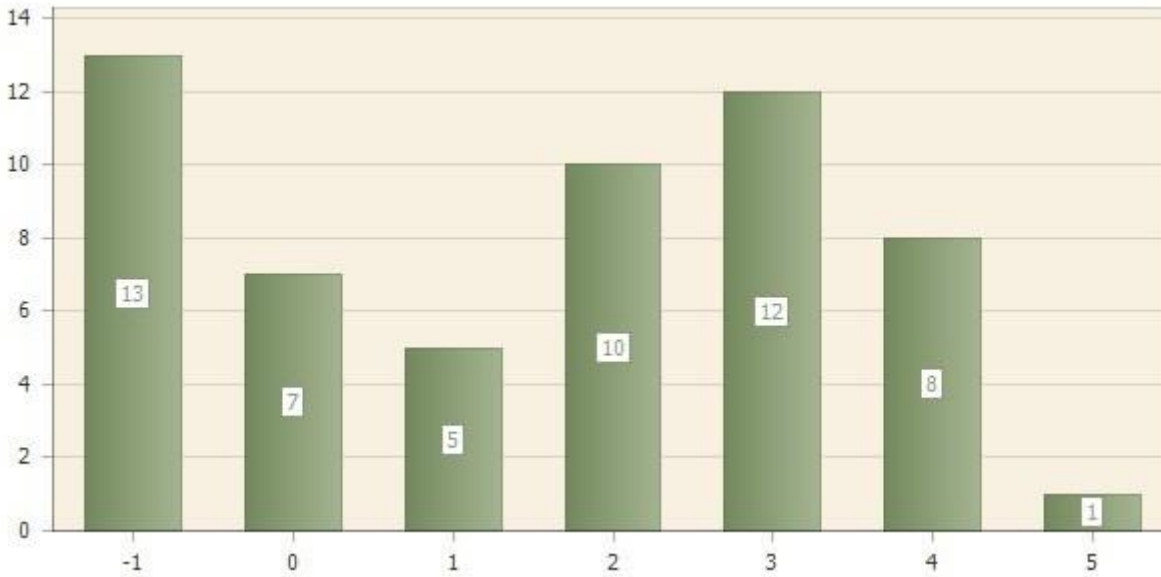
How would you rate the decision-making processes for college budgeting at Cañada?

Question type: Matrix & Multimatrix

Number of responses: 56

Number of respondents: 61

Scale: 0 (Very Unsatisfactory) – 5 (Very Satisfactory); -1: NO OPINION/ UNSURE



Matrix row	Mean	Std dev	Count and % Rating 0	Count and % Rating 1	Count and % Rating 2	Count and % Rating 3	Count and % Rating 4	Count and % Rating 5	No Opinion/ Unsure option
rating	2.3	1.4	7 (12.5%)	5 (8.9%)	10 (17.9%)	12 (21.4%)	8 (14.3%)	1 (1.8%)	13 (23.2%)

1.10. P4Q2

How would you rate the access faculty have to information concerning Cañada's budget?

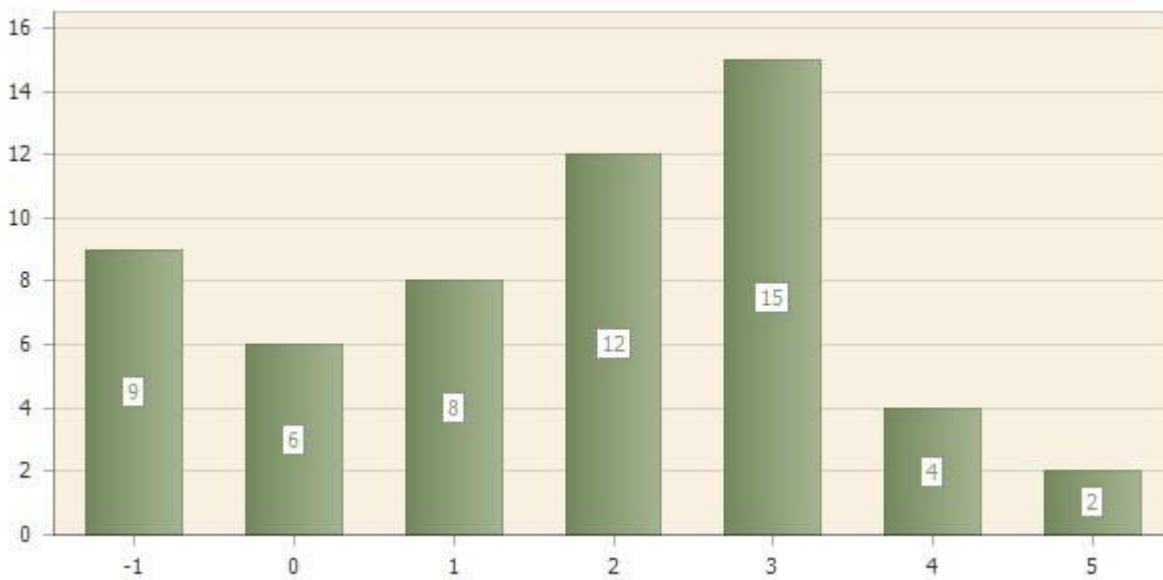
Question type: Matrix & Multimatrix

Number of responses: 56

Number of respondents: 61

Scale: 0 (Very Unsatisfactory) – 5 (Very Satisfactory); -1: No Opinion/ Unsure

Matrix row	Mean	Std dev	Count and % Rating 0	Count and % Rating 1	Count and % Rating 2	Count and % Rating 3	Count and % Rating 4	Count and % Rating 5	No Opinion/ Unsure
rating	2.2	1.3	6 (10.7%)	8 (14.3%)	12 (21.4%)	15 (26.8%)	4 (7.1%)	2 (3.6%)	9 (16.1%)



1.11. P4Q3

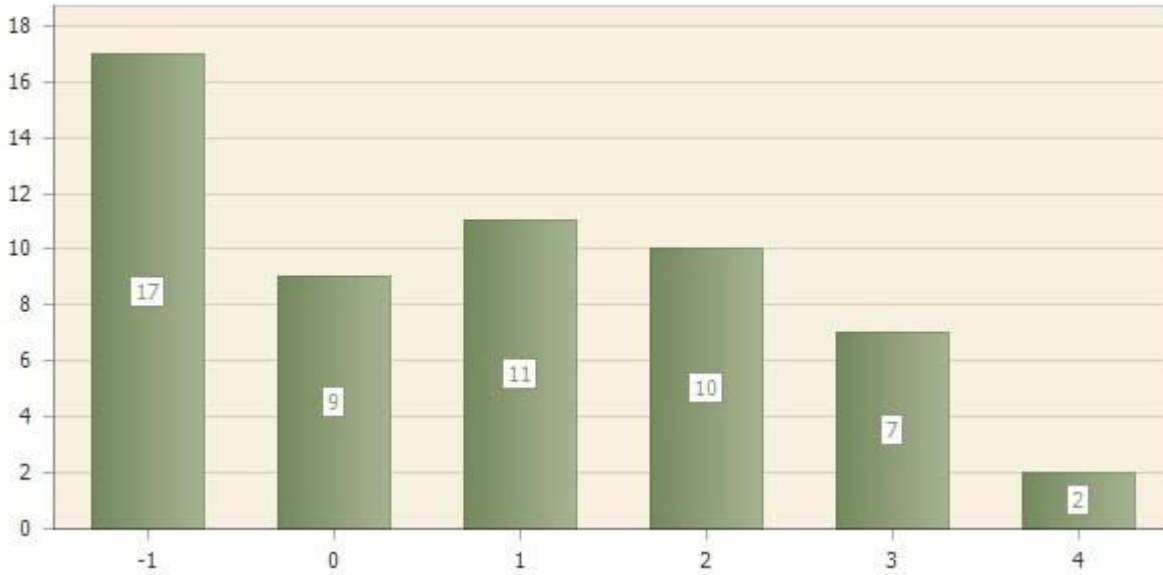
How would you rate the explanation for why some aspects of Cañada's budget are unavailable to faculty?

Question type: Matrix & Multimatrix

Number of responses: 56

Number of respondents: 61

Scale: 0 (Very Unsatisfactory) – 5 (Very Satisfactory); -1: NO OPINION/ UNSURE



Matrix row	Mean	Std dev	Count and % Rating 0	Count and % Rating 1	Count and % Rating 2	Count and % Rating 3	Count and % Rating 4	Count and % Rating 5	NO OPINION/ UNSURE
rating	1.5	1.2	9 (16.1%)	11 (19.6%)	10 (17.9%)	7 (12.5%)	2 (3.6%)	0 (0%)	17 (30.4%)

1.12. P5Q1

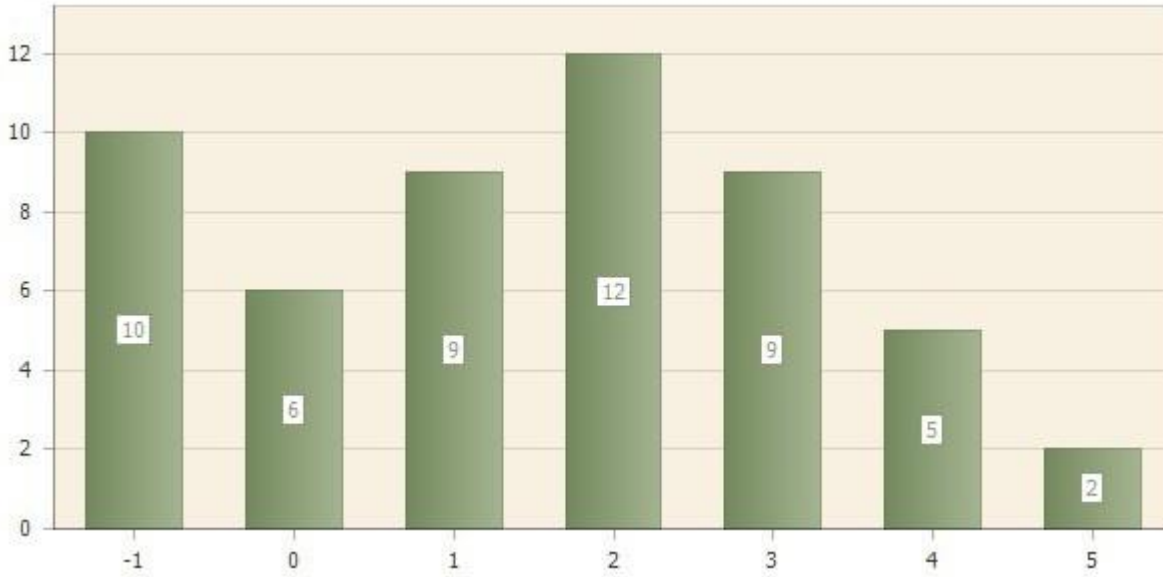
How would you rate institutional memory at Cañada?

Question type: Matrix & Multimatrix

Number of responses: 53

Number of respondents: 61

Scale: 0 (Very Unsatisfactory) – 5 (Very Satisfactory); -1: NO OPINION/ UNSURE



Matrix row	Mean	Std dev	Count and % Rating 0	Count and % Rating 1	Count and % Rating 2	Count and % Rating 3	Count and % Rating 4	Count and % Rating 5	NO OPINION/ UNSURE
rating	2.1	1.4	6 (11.3%)	9 (17.0%)	12 (22.6%)	9 (17.0%)	5 (9.4%)	2 (3.8%)	10 (18.9%)

1.13. P6Q1

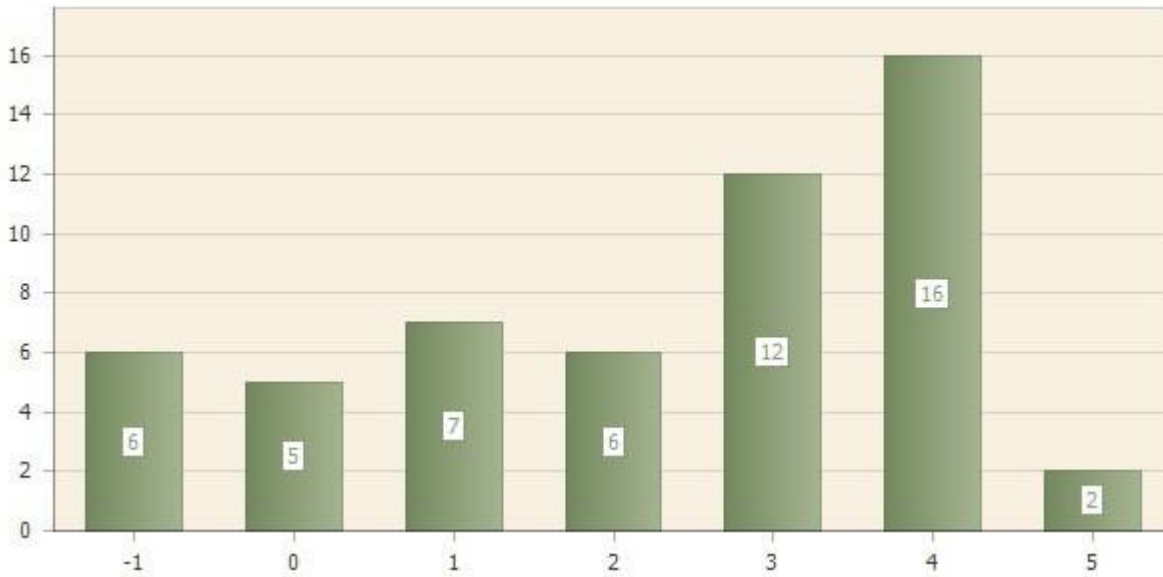
How would you rate the collegial working relationships between the President and faculty members at Cañada?

Question type: Matrix & Multimatrix

Number of responses: 54

Number of respondents: 61

Scale: 0 (Very Unsatisfactory) – 5 (Very Satisfactory); -1: NO OPINION/ UNSURE



Matrix row	Mean	Std dev	Count and % Rating 0	Count and % Rating 1	Count and % Rating 2	Count and % Rating 3	Count and % Rating 4	Count and % Rating 5	NO OPINION/ UNSURE option
rating	2.7	1.4	5 (9.3%)	7 (13.0%)	6 (11.1%)	12 (22.2%)	16 (29.6%)	2 (3.7%)	6 (11.1%)

1.14. P6Q2

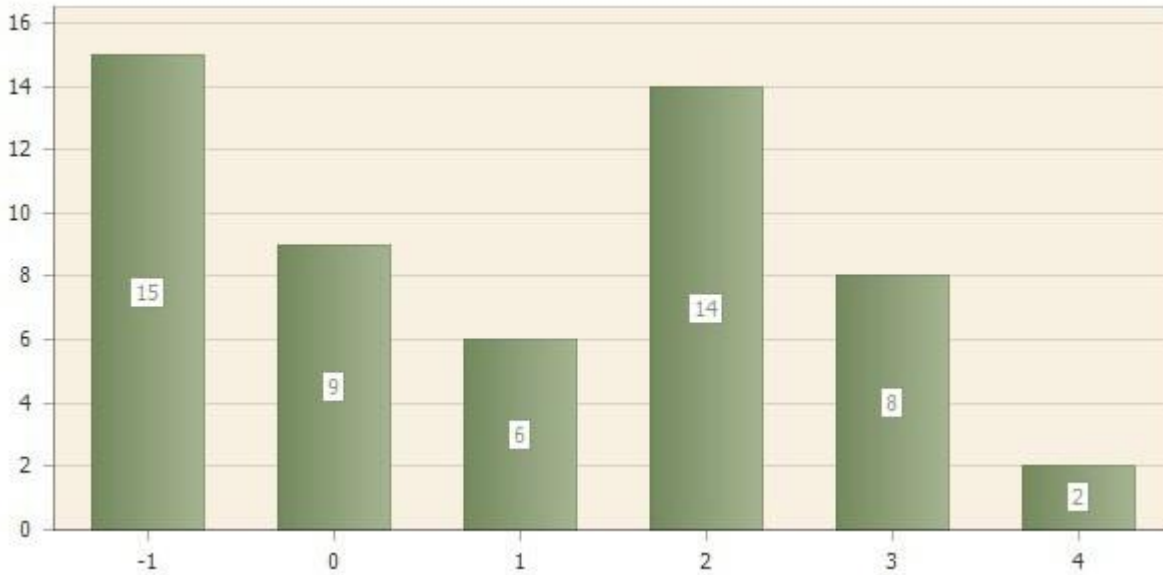
How would you rate the collegial working relationships between individual Vice Presidents and faculty members at Cañada?

Question type: Matrix & Multimatrix

Number of responses: 54

Number of respondents: 61

Scale: 0 (Very Unsatisfactory) – 5 (Very Satisfactory); -1: NO OPINION/ UNSURE



Matrix row	Mean	Std dev	Count and % Rating 0	Count and % Rating 1	Count and % Rating 2	Count and % Rating 3	Count and % Rating 4	Count and % Rating 5	NO OPINION/ UNSURE
rating	1.7	1.2	9 (16.7%)	6 (11.1%)	14 (25.9%)	8 (14.8%)	2 (3.7%)	0 (0%)	15 (27.8%)

1.15. P6Q3

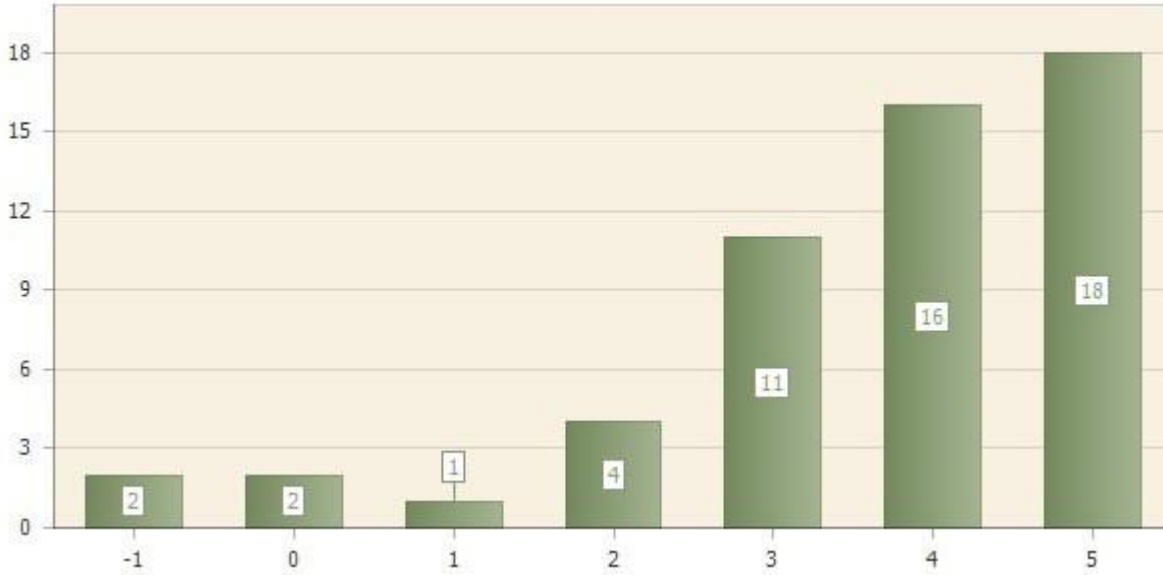
How would you rate the collegial working relationships between individual Deans and faculty members at Cañada?

Question type: Matrix & Multimatrix

Number of responses: 54

Number of respondents: 61

Scale: 0 (Very Unsatisfactory) – 5 (Very Satisfactory); -1: NO OPINION/ UNSURE



Matrix row	Mean	Std dev	Count and % Rating 0	Count and % Rating 1	Count and % Rating 2	Count and % Rating 3	Count and % Rating 4	Count and % Rating 5	NO OPINION/ UNSURE
rating	3.8	1.3	2 (3.7%)	1 (1.9%)	4 (7.4%)	11 (20.4%)	16 (29.6%)	18 (33.3%)	2 (3.7%)

1.16. P6Q4

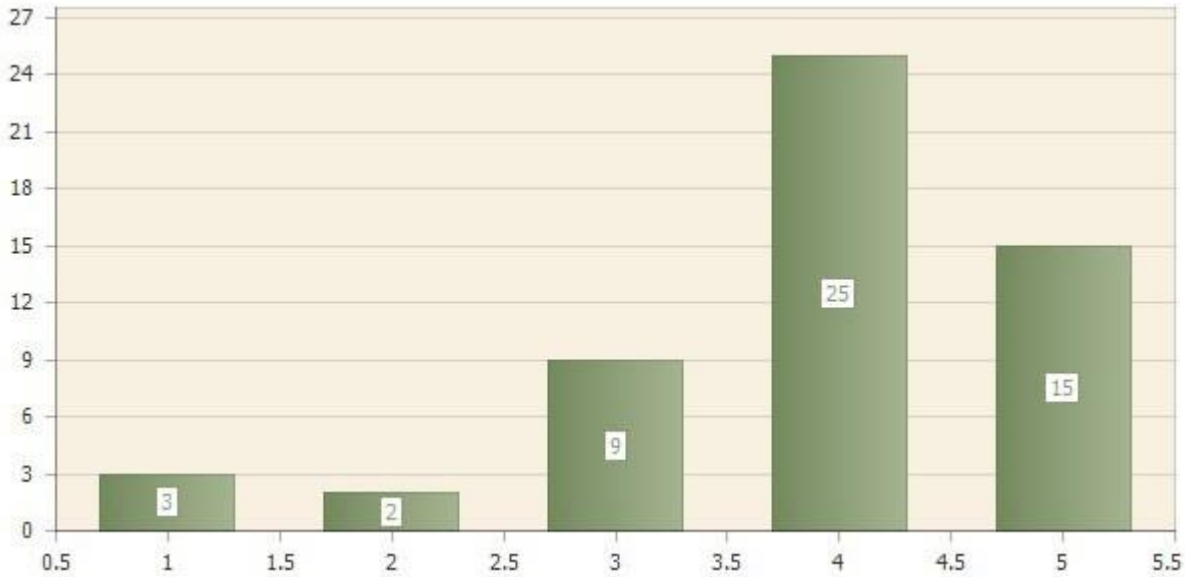
How would you rate the collegial working relationships between individual faculty members at Cañada?

Question type: Matrix & Multimatrix

Number of responses: 54

Number of respondents: 61

Scale: 0 (Very Unsatisfactory) – 5 (Very Satisfactory); -1: NO OPINION/ UNSURE



Matrix row	Mean	Std dev	Count and % Rating 0	Count and % Rating 1	Count and % Rating 2	Count and % Rating 3	Count and % Rating 4	Count and % Rating 5	NO OPINION/ UNSURE
rating	3.9	1.0	0 (0%)	3 (5.6%)	2 (3.7%)	9 (16.7%)	25 (46.3%)	15 (27.8%)	0 (0%)

1.17. P6Q5

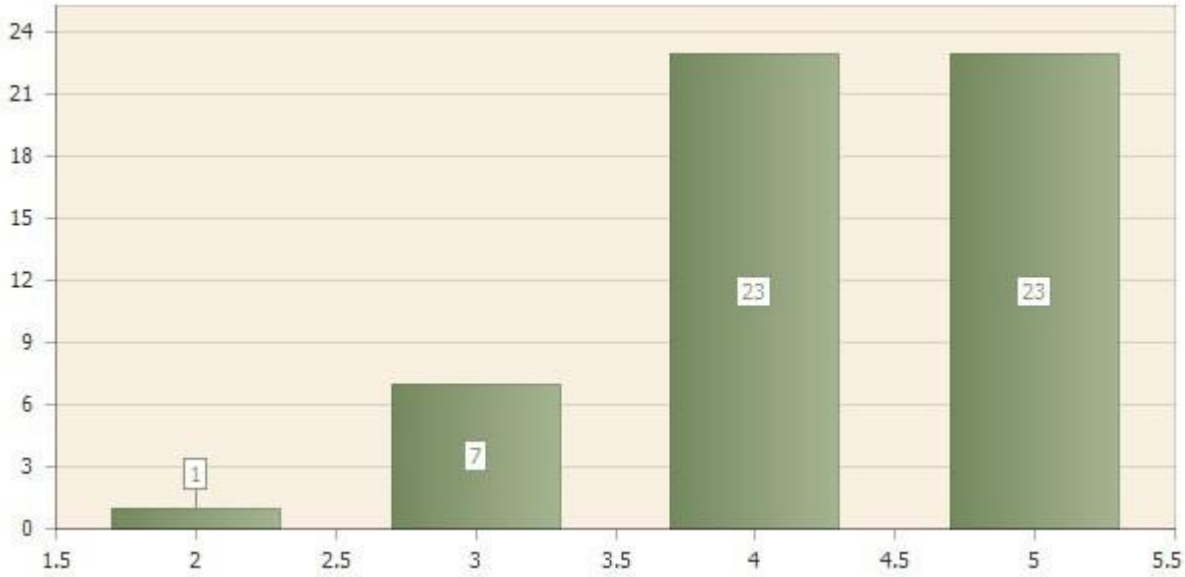
How would you rate collegial working relationships between the staff and faculty members at Cañada?

Question type: Matrix & Multimatrix

Number of responses: 54

Number of respondents: 61

Scale: 0 (Very Unsatisfactory) – 5 (Very Satisfactory); -1: NO OPINION/ UNSURE



Matrix row	Mean	Std dev	Count and % Rating 0	Count and % Rating 1	Count and % Rating 2	Count and % Rating 3	Count and % Rating 4	Count and % Rating 5	NO OPINION/ UNSURE
rating	4.3	0.8	0 (0%)	0 (0%)	1 (1.9%)	7 (13.0%)	23 (42.6%)	23 (42.6%)	0 (0%)

1.18. P7Q1

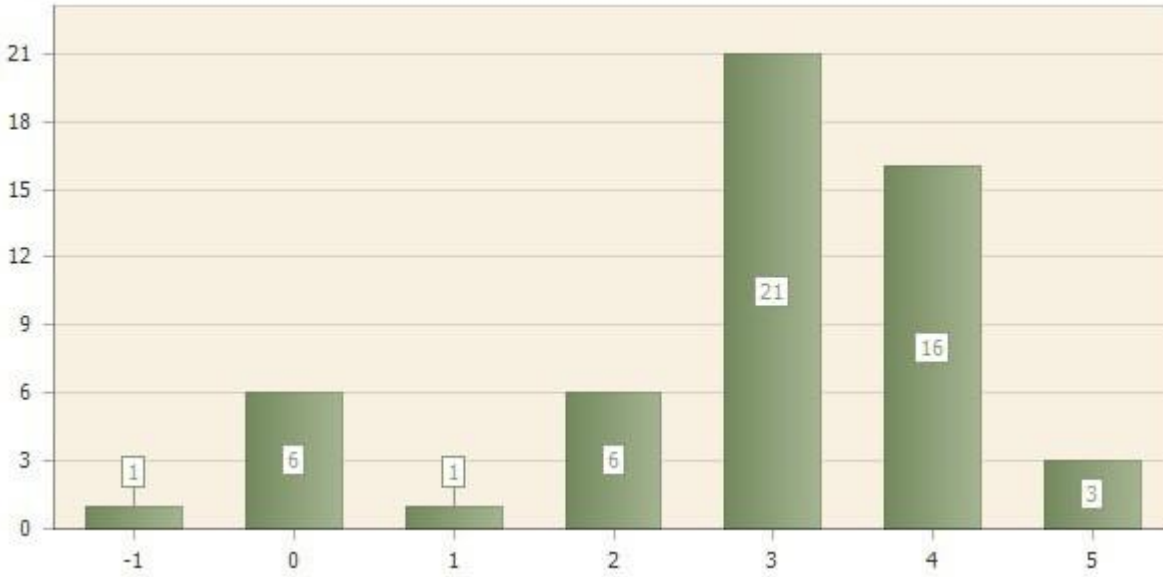
How do you rate the support faculty receive at Cañada?

Question type: Matrix & Multimatrix

Number of responses: 54

Number of respondents: 61

Scale: 0 (Very Unsatisfactory) – 5 (Very Satisfactory); -1: NO OPINION/ UNSURE



Matrix row	Mean	Std dev	Count and % Rating 0	Count and % Rating 1	Count and % Rating 2	Count and % Rating 3	Count and % Rating 4	Count and % Rating 5	NO OPINION/ UNSURE option
rating	2.9	1.3	6 (11.1%)	1 (1.9%)	6 (11.1%)	21 (38.9%)	16 (29.6%)	3 (5.6%)	1 (1.9%)

1.19. P7Q2

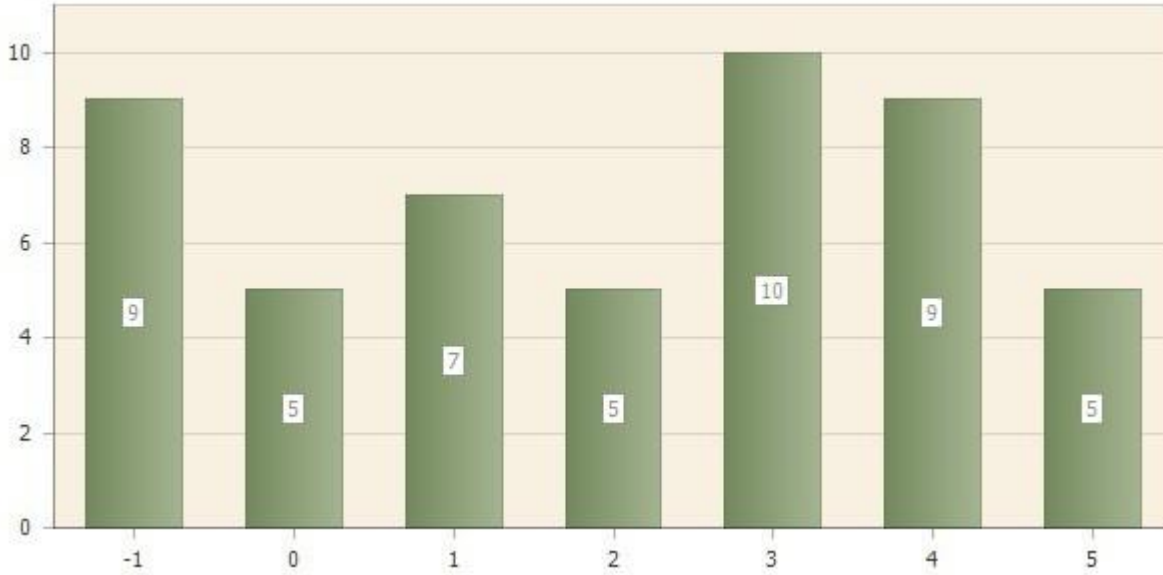
How would you rate the support you receive from the President?

Question type: Matrix & Multimatrix

Number of responses: 50

Number of respondents: 61

Scale: 0 (Very Unsatisfactory) – 5 (Very Satisfactory); -1: NO OPINION/ UNSURE



Matrix row	Mean	Std dev	Count and % Rating 0	Count and % Rating 1	Count and % Rating 2	Count and % Rating 3	Count and % Rating 4	Count and % Rating 5	NO OPINION/ UNSURE
rating	2.6	1.6	5 (10.0%)	7 (14.0%)	5 (10.0%)	10 (20.0%)	9 (18.0%)	5 (10.0%)	9 (18.0%)

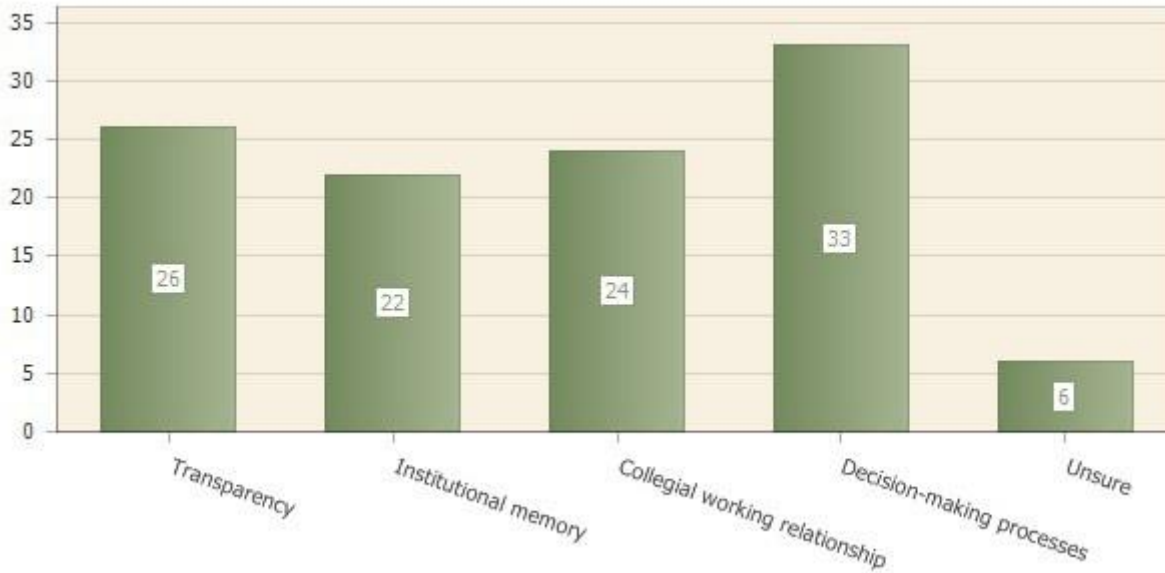
1.20. P7Q3

Which of the following factors should be addressed in order to improve support from the President? Check all that apply.

Question type: Multiple choice

Number of responses: 48

Number of respondents: 61



Answer	Count	Percent answer
Transparency	26	54.2%
Institutional memory	22	45.8%
Collegial working relationship	24	50.0%
Decision-making processes	33	68.8%
Unsure	6	12.5%

1.21. P8Q1

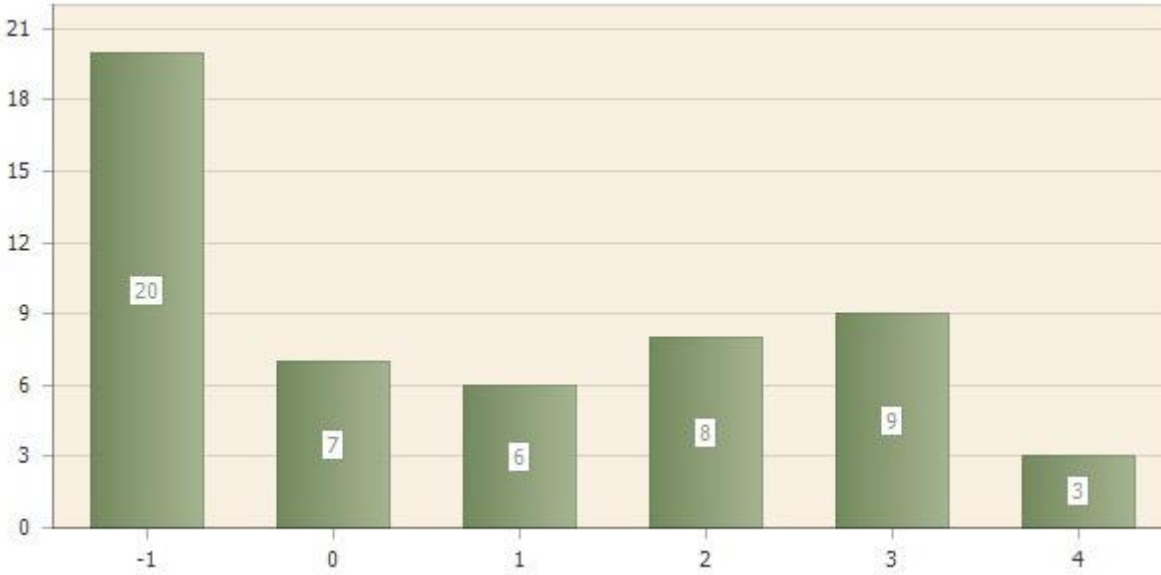
How would you rate the support you receive from the Vice Presidents?

Question type: Matrix & Multimatrix

Number of responses: 53

Number of respondents: 61

Scale: 0 (Very Unsatisfactory) – 5 (Very Satisfactory); -1: NO OPINION/ UNSURE



Matrix row	Mean	Std dev	Count and % Rating 0	Count and % Rating 1	Count and % Rating 2	Count and % Rating 3	Count and % Rating 4	Count and % Rating 5	NO OPINION/ UNSURE
rating	1.8	1.3	7 (13.2%)	6 (11.3%)	8 (15.1%)	9 (17.0%)	3 (5.7%)	0 (0%)	20 (37.7%)

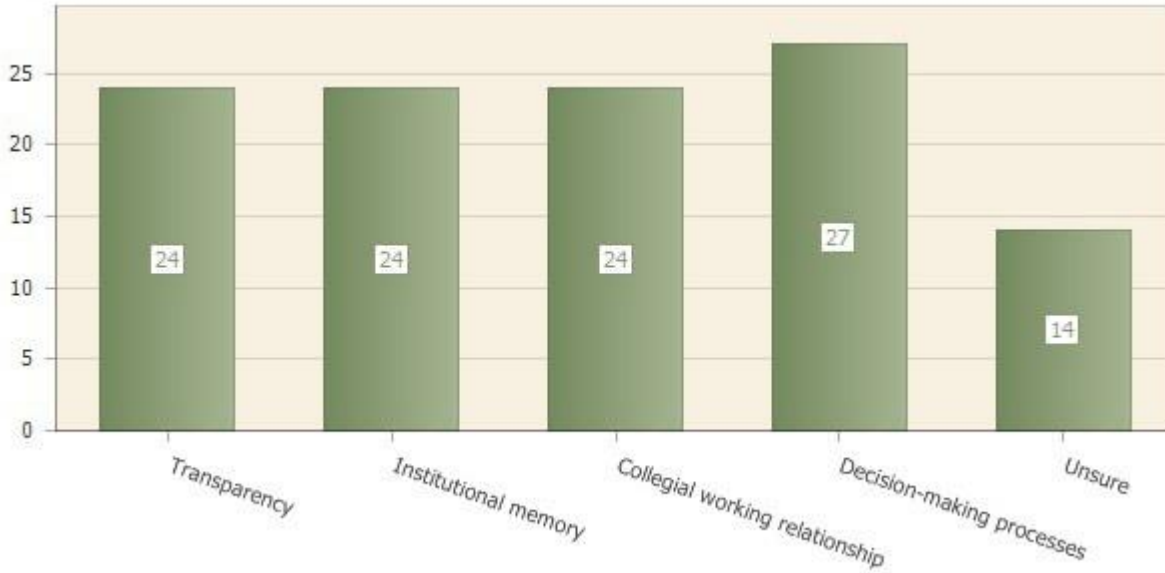
1.22. P8Q2

Which of the following factors should be addressed in order to improve support from the Vice Presidents? Check all that apply.

Question type: Multiple choice

Number of responses: 44

Number of respondents: 61



Answer	Count	Percent answer
Transparency	24	54.5%
Institutional memory	24	54.5%
Collegial working relationship	24	54.5%
Decision-making processes	27	61.4%
Unsure	14	31.8%

1.23. P9Q1

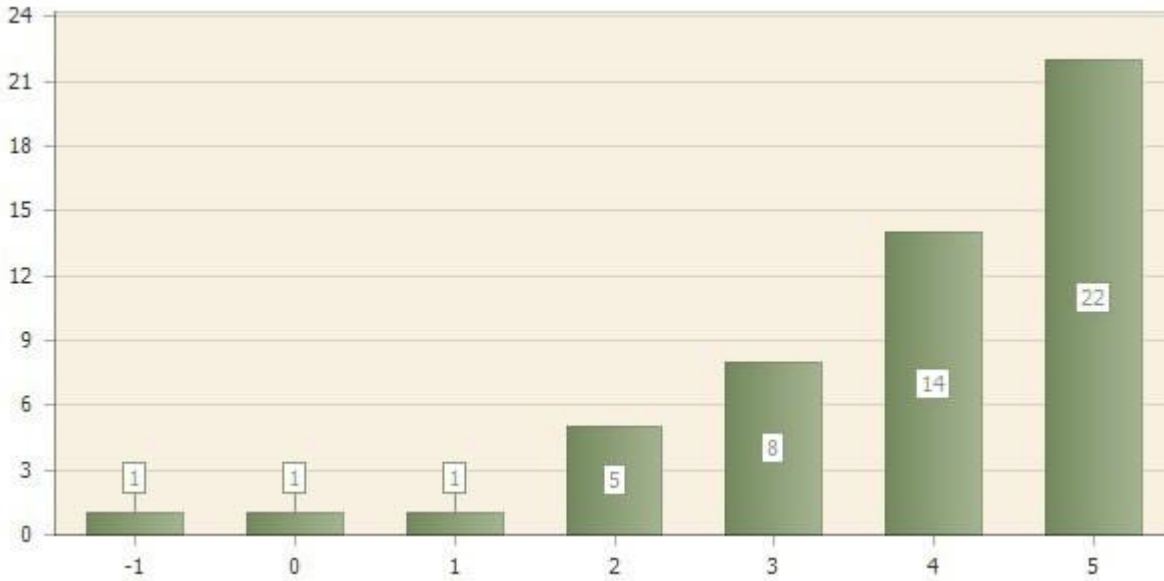
How would you rate the support you receive from your Dean?

Question type: Matrix & Multimatrix

Number of responses: 52

Number of respondents: 61

Scale: 0 (Very Unsatisfactory) – 5 (Very Satisfactory); -1: NO OPINION/ UNSURE



Matrix row	Mean	Std dev	Count and % Rating 0	Count and % Rating 1	Count and % Rating 2	Count and % Rating 3	Count and % Rating 4	Count and % Rating 5	NO OPINION/ UNSURE
rating	3.9	1.2	1 (1.9%)	1 (1.9%)	5 (9.6%)	8 (15.4%)	14 (26.9%)	22 (42.3%)	1 (1.9%)

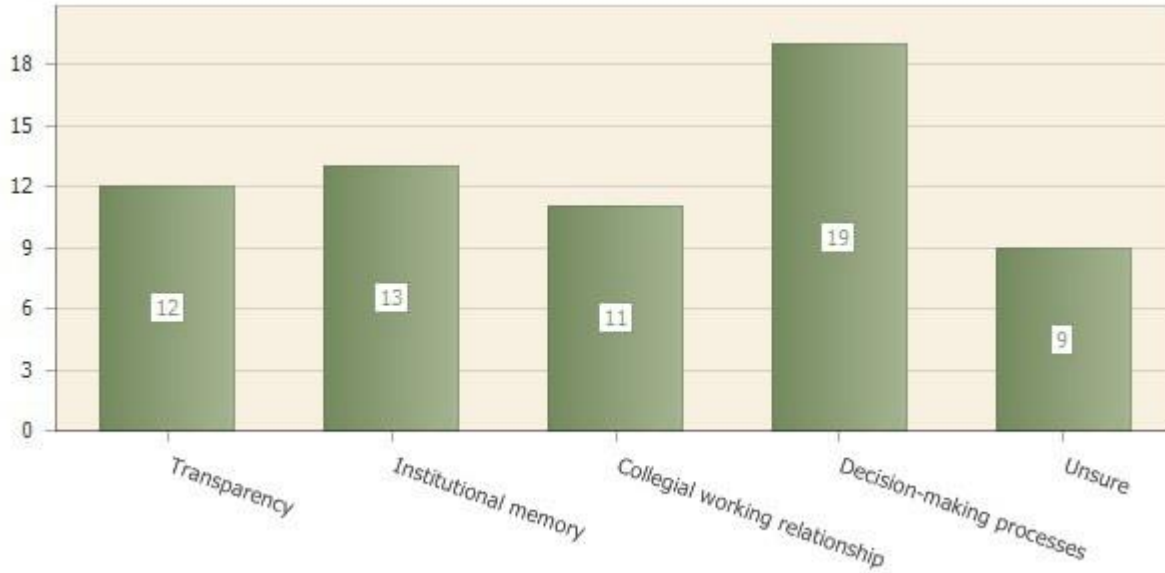
1.24. P9Q2

Which of the following factors should be addressed in order to improve support from your Dean? Check all that apply.

Question type: Multiple choice

Number of responses: 35

Number of respondents: 61



Answer	Count	Percent answer
Transparency	12	34.3%
Institutional memory	13	37.1%
Collegial working relationship	11	31.4%
Decision-making processes	19	54.3%
Unsure	9	25.7%

1.38. P10Q1

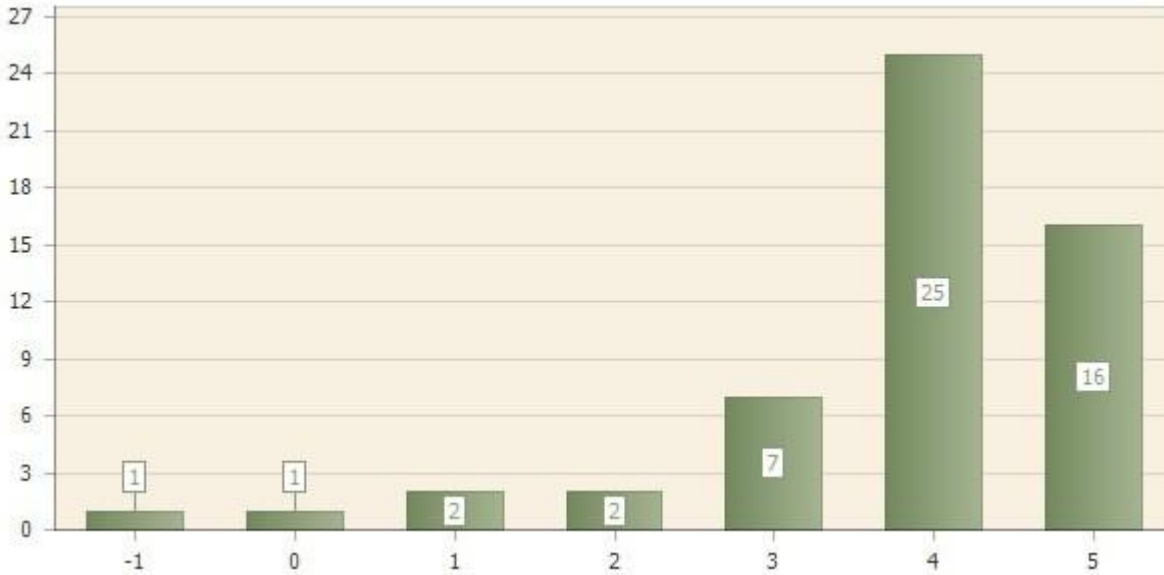
How would you rate the support you receive from other faculty members?

Question type: Matrix & Multimatrix

Number of responses: 54

Number of respondents: 61

Scale: 0 (Very Unsatisfactory) – 5 (Very Satisfactory); -1: NO OPINION/ UNSURE



Matrix row	Mean	Std dev	Count and % Rating 0	Count and % Rating 1	Count and % Rating 2	Count and % Rating 3	Count and % Rating 4	Count and % Rating 5	NO OPINION/ UNSURE
rating	3.9	1.1	1 (1.9%)	2 (3.7%)	2 (3.7%)	7 (13.0%)	25 (46.3%)	16 (29.6%)	1 (1.9%)

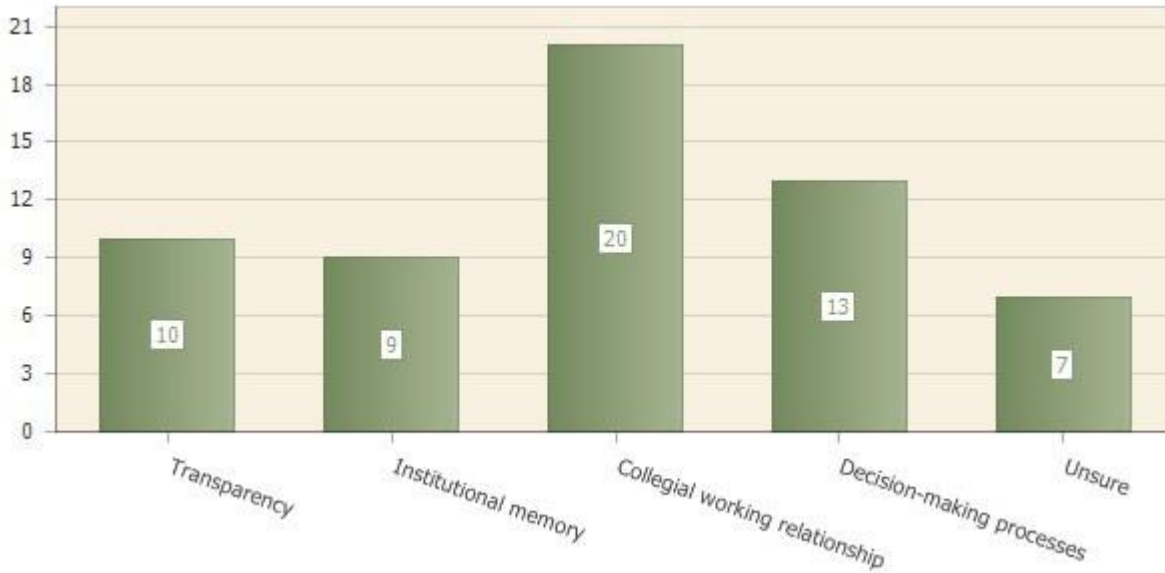
1.39. P10Q2

Which of the following factors should be addressed in order to improve support from other faculty members? Check all that apply.

Question type: Multiple choice

Number of responses: 33

Number of respondents: 61



Answer	Count	Percent answer
Transparency	10	30.3%
Institutional memory	9	27.3%
Collegial working relationship	20	60.6%
Decision-making processes	13	39.4%
Unsure	7	21.2%

1.42. P11Q1

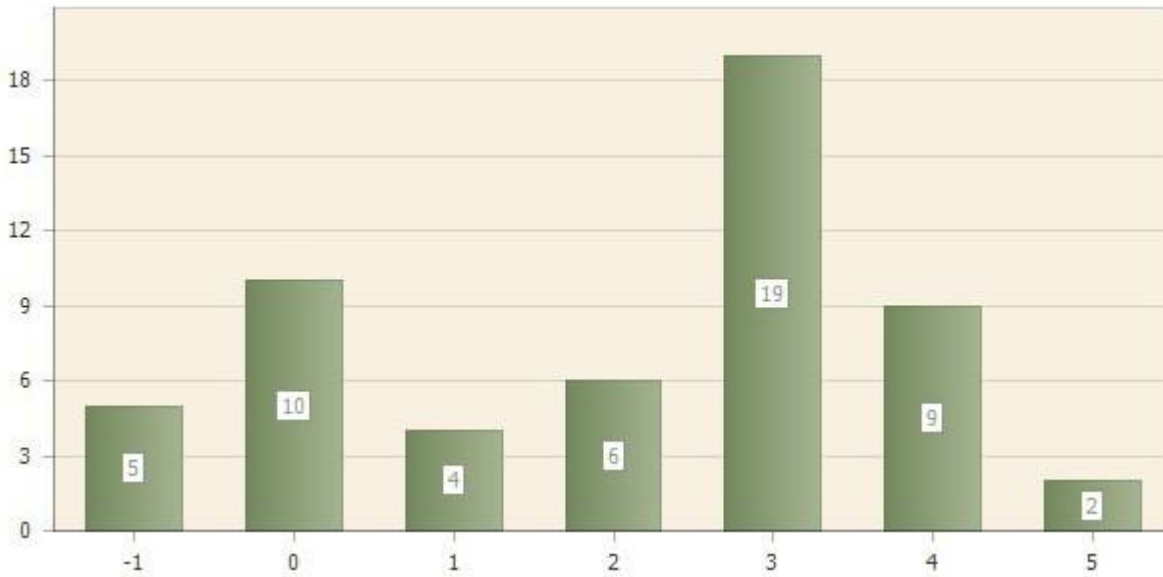
How would you rate hiring procedures at Cañada?

Question type: Matrix & Multimatrix

Number of responses: 55

Number of respondents: 61

Scale: 0 (Very Unsatisfactory) – 5 (Very Satisfactory); -1: NO OPINION/ UNSURE



Matrix row	Mean	Std dev	Count and % Rating 0	Count and % Rating 1	Count and % Rating 2	Count and % Rating 3	Count and % Rating 4	Count and % Rating 5	NO OPINION/ UNSURE option
rating	2.4	1.5	10 (18.2%)	4 (7.3%)	6 (10.9%)	19 (34.5%)	9 (16.4%)	2 (3.6%)	5 (9.1%)

1.43. P11Q2

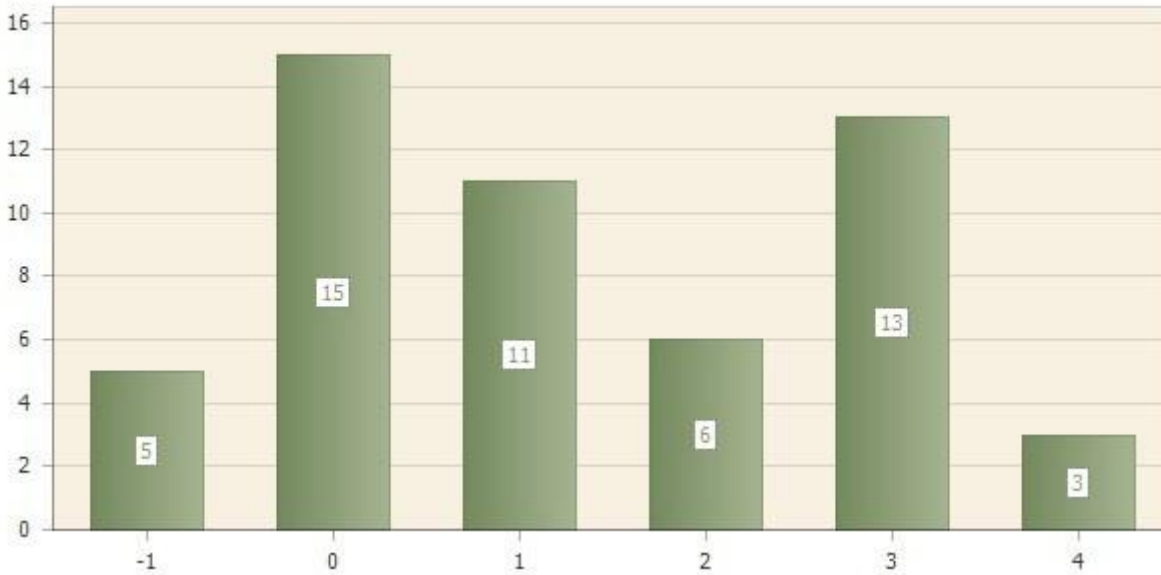
How would you rank the appropriateness for Vice Presidents or higher-ranking administrators to be involved in the first round of meetings and interviews of hiring committees?

Question type: Matrix & Multimatrix

Number of responses: 53

Number of respondents: 61

Scale: 0 (Not appropriate) – 5 (Appropriate); -1: NO OPINION/ UNSURE



Matrix row	Mean	Std dev	Count and % Rating 0	Count and % Rating 1	Count and % Rating 2	Count and % Rating 3	Count and % Rating 4	Count and % Rating 5	NO OPINION/ UNSURE
rating	1.5	1.4	15 (28.3%)	11 (20.8%)	6 (11.3%)	13 (24.5%)	3 (5.7%)	0 (0%)	5 (9.4%)

1.44. P11Q3

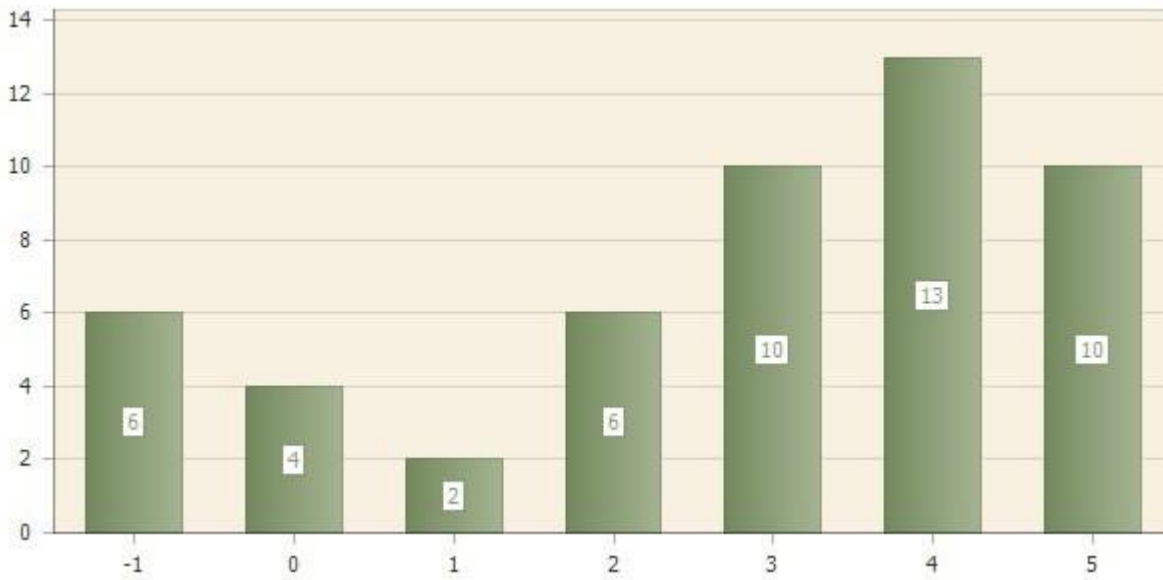
How would you rank the issue of hiring priorities at Cañada?

Question type: Matrix & Multimatrix

Number of responses: 51

Number of respondents: 61

Scale: 0 (Note an issue) – 5 (Extremely urgent); -1: NO OPINION/ UNSURE



Matrix row	Mean	Std dev	Count and % Rating 0	Count and % Rating 1	Count and % Rating 2	Count and % Rating 3	Count and % Rating 4	Count and % Rating 5	NO OPINION/ UNSURE
rating	3.2	1.5	4 (7.8%)	2 (3.9%)	6 (11.8%)	10 (19.6%)	13 (25.5%)	10 (19.6%)	6 (11.8%)

2.

2.1. P2Q1

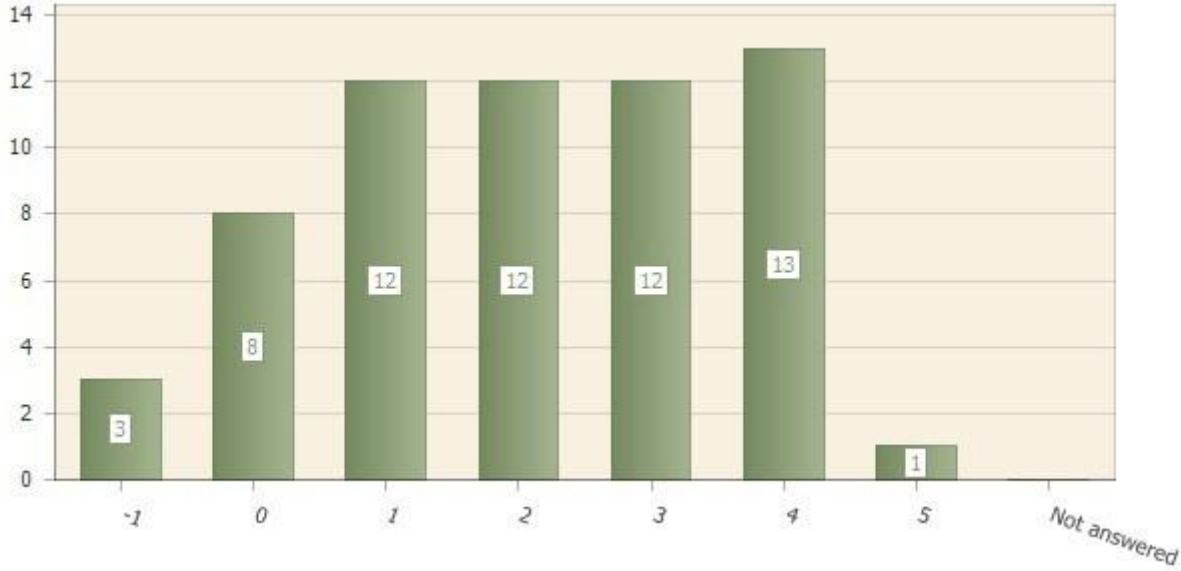
How would you rate transparency at Cañada?

Question type: Matrix & Multimatrix

Number of responses: 61

Number of respondents: 61

Scale: 0 (Very Unsatisfactory) – 5 (Very Satisfactory); -1: NO OPINION/ UNSURE



Matrix row	Not answered	Mean	Std dev	Count and % Rating 0	Count and % Rating 1	Count and % Rating 2	Count and % Rating 3	Count and % Rating 4	Count and % Rating 5	NO OPINION/ UNSURE
rating	3 (4.9%)	2.2	1.4	8 (13.1%)	12 (19.7%)	12 (19.7%)	12 (19.7%)	13 (21.3%)	1 (1.6%)	3 (4.9%)

2.2. P2Q2

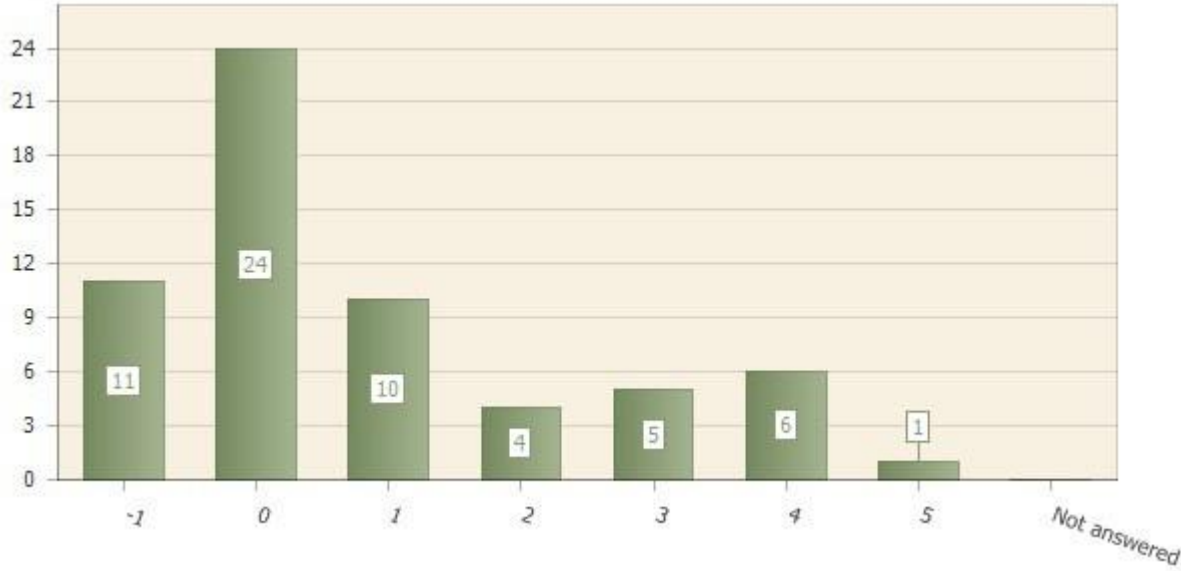
How well are faculty and staff included in the evaluation process for campus administrators?

Question type: Matrix & Multimatrix

Number of responses: 61

Number of respondents: 61

Scale: 0 (Very Unsatisfactory) – 5 (Very Satisfactory); -1: NO OPINION/ UNSURE



Matrix row	Not answered	Mean	Std dev	Count and % Rating 0	Count and % Rating 1	Count and % Rating 2	Count and % Rating 3	Count and % Rating 4	Count and % Rating 5	NO OPINION/ UNSURE
rating	11 (18.0%)	1.2	1.5	24 (39.3%)	10 (16.4%)	4 (6.6%)	5 (8.2%)	6 (9.8%)	1 (1.6%)	11 (18.0%)

2.3. P2Q3

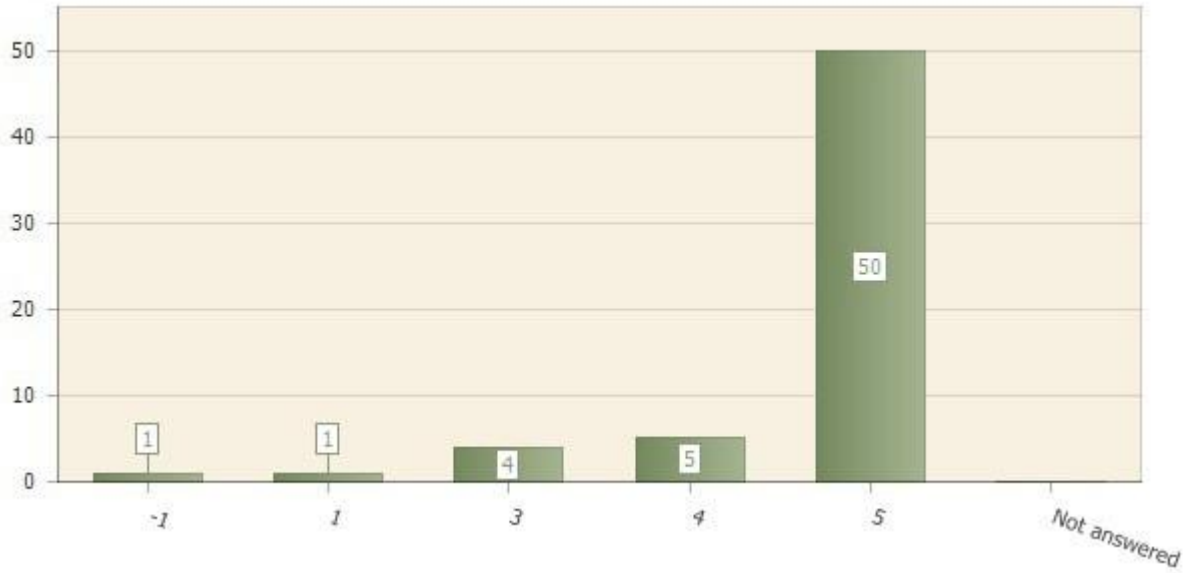
How important is it for campus administrators to be evaluated ANONYMOUSLY by faculty and staff?

Question type: Matrix & Multimatrix

Number of responses: 61

Number of respondents: 61

Scale: 0 (Not important) – 5 (Very important); -1: NO OPINION/ UNSURE



Matrix row	Not answered	Mean	Std dev	Count and % Rating 0	Count and % Rating 1	Count and % Rating 2	Count and % Rating 3	Count and % Rating 4	Count and % Rating 5	NO OPINION/ UNSURE
rating	1 (1.6%)	4.7	0.7	0 (0%)	1 (1.6%)	0 (0%)	4 (6.6%)	5 (8.2%)	50 (82.0%)	1 (1.6%)

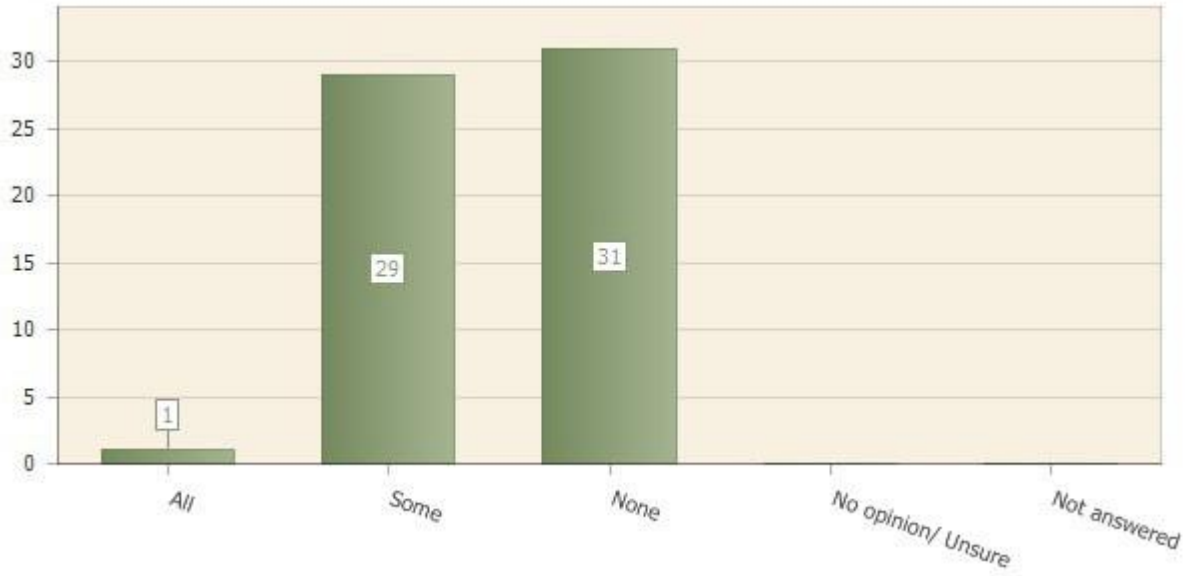
2.4. P2Q4

Should campus administrators be able to select all, some, or none of their own evaluators?

Question type: Multiple choice

Number of responses: 61

Number of respondents: 61



Answer	Count	Percent answer
All	1	1.6%
Some	29	47.5%
None	31	50.8%
No opinion/ Unsure	0	0%
Not answered	0	0%

2.5. P2Q5

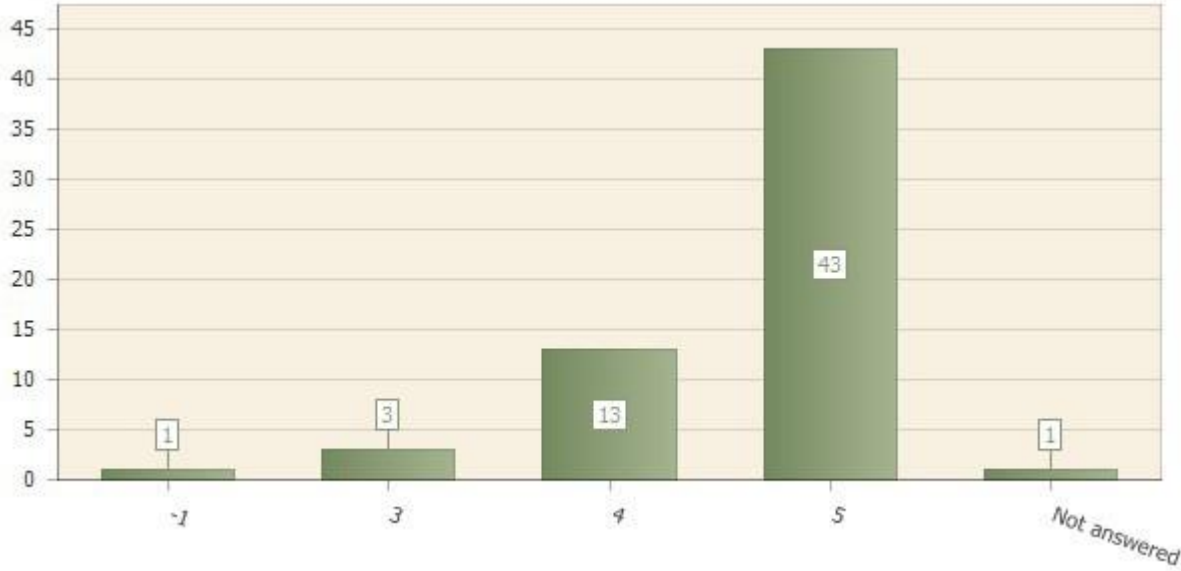
How important is it for ALL faculty and staff to have the option of evaluating their Dean, Vice Presidents, and President?

Question type: Matrix & Multimatrix

Number of responses: 60

Number of respondents: 61

Scale: 0 (Not important) – 5 (Very important); -1: NO OPINION/ UNSURE



Matrix row	Not answered	Mean	Std dev	Count and % Rating 0	Count and % Rating 1	Count and % Rating 2	Count and % Rating 3	Count and % Rating 4	Count and % Rating 5	NO OPINION/ UNSURE
rating	2 (3.3%)	4.7	0.6	0 (0%)	0 (0%)	0 (0%)	3 (5.0%)	13 (21.7%)	43 (71.7%)	1 (1.7%)

2.6. 3Q1

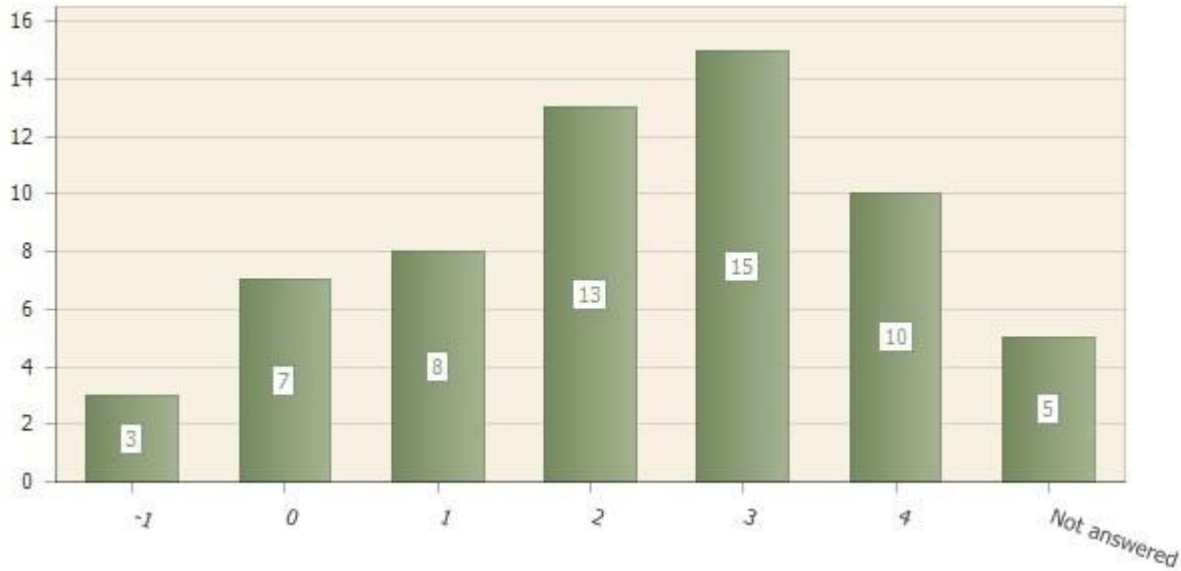
How would you rate the decision-making processes at Cañada?

Question type: Matrix & Multimatrix

Number of responses: 56

Number of respondents: 61

Scale: 0 (Very Unsatisfactory) – 5 (Very Satisfactory); -1: NO OPINION/ UNSURE



Matrix row	Not answered	Mean	Std dev	Count and % Rating 0	Count and % Rating 1	Count and % Rating 2	Count and % Rating 3	Count and % Rating 4	Count and % Rating 5	NO OPINION/ UNSURE
rating	8 (13.1%)	2.2	1.3	7 (12.5%)	8 (14.3%)	13 (23.2%)	15 (26.8%)	10 (17.9%)	0 (0%)	3 (5.4%)

2.7. P3Q2

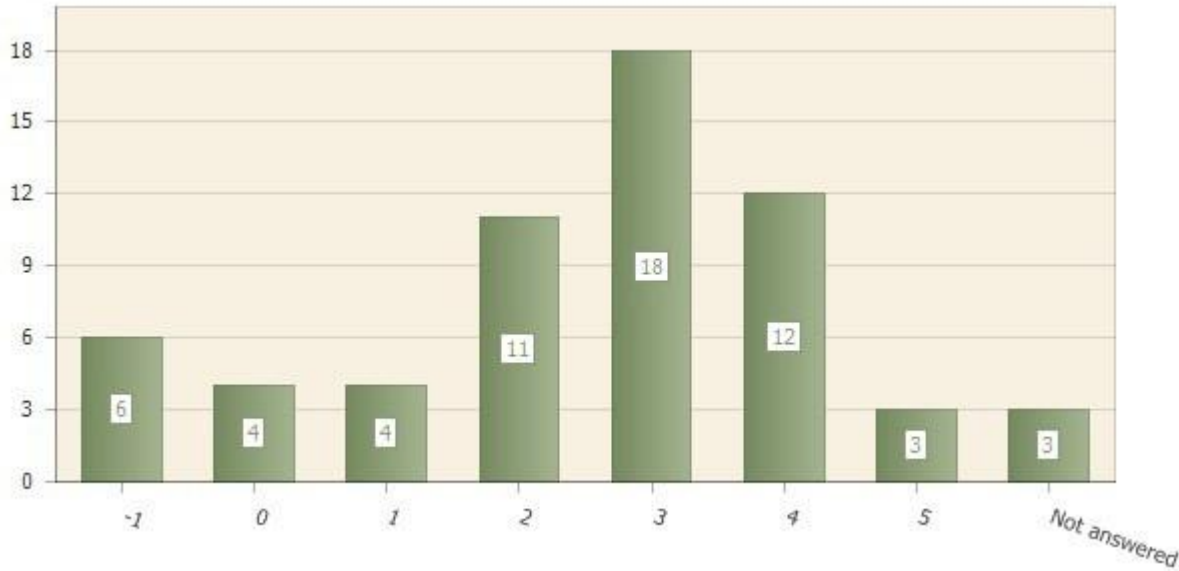
How would you rate the decision-making processes for course offerings at Cañada?

Question type: Matrix & Multimatrix

Number of responses: 58

Number of respondents: 61

Scale: 0 (Very Unsatisfactory) – 5 (Very Satisfactory); -1: NO OPINION/ UNSURE



Matrix row	Not answered	Mean	Std dev	Count and % Rating 0	Count and % Rating 1	Count and % Rating 2	Count and % Rating 3	Count and % Rating 4	Count and % Rating 5	NO OPINION/ UNSURE
rating	9 (14.8%)	2.8	1.3	4 (6.9%)	4 (6.9%)	11 (19.0%)	18 (31.0%)	12 (20.7%)	3 (5.2%)	6 (10.3%)

2.8. P3Q3

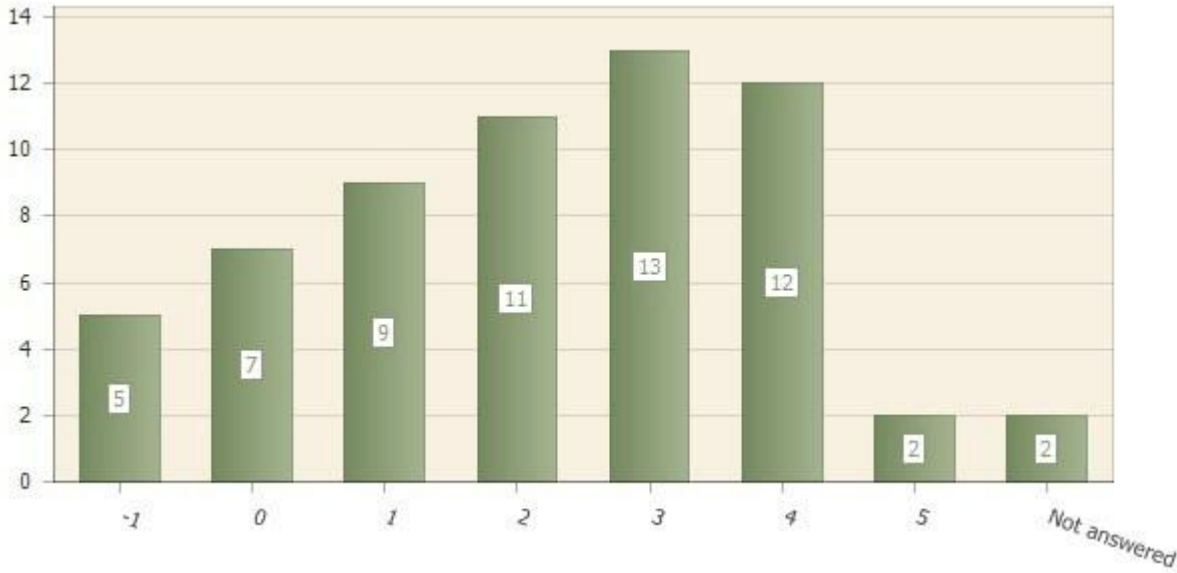
How would you rate the decision-making processes for course cancellations at Cañada?

Question type: Matrix & Multimatrix

Number of responses: 59

Number of respondents: 61

Scale: 0 (Very Unsatisfactory) – 5 (Very Satisfactory); -1: NO OPINION/ UNSURE



Matrix row	Not answered	Mean	Std dev	Count and % Rating 0	Count and % Rating 1	Count and % Rating 2	Count and % Rating 3	Count and % Rating 4	Count and % Rating 5	NO OPINION/ UNSURE
rating	7 (11.5%)	2.4	1.4	7 (11.9%)	9 (15.3%)	11 (18.6%)	13 (22.0%)	12 (20.3%)	2 (3.4%)	5 (8.5%)

2.9. P4Q1

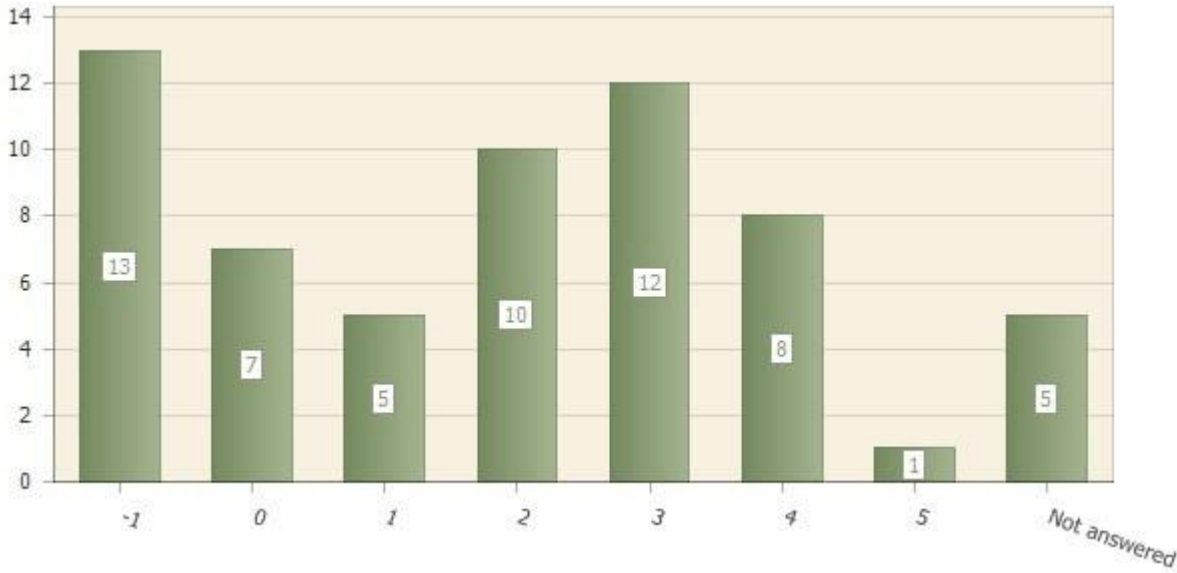
How would you rate the decision-making processes for college budgeting at Cañada?

Question type: Matrix & Multimatrix

Number of responses: 56

Number of respondents: 61

Scale: 0 (Very Unsatisfactory) – 5 (Very Satisfactory); -1: NO OPINION/ UNSURE



Matrix row	Not answered	Mean	Std dev	Count and % Rating 0	Count and % Rating 1	Count and % Rating 2	Count and % Rating 3	Count and % Rating 4	Count and % Rating 5	NO OPINION/ UNSURE
rating	18 (29.5%)	2.3	1.4	7 (12.5%)	5 (8.9%)	10 (17.9%)	12 (21.4%)	8 (14.3%)	1 (1.8%)	13 (23.2%)

2.10. P4Q2

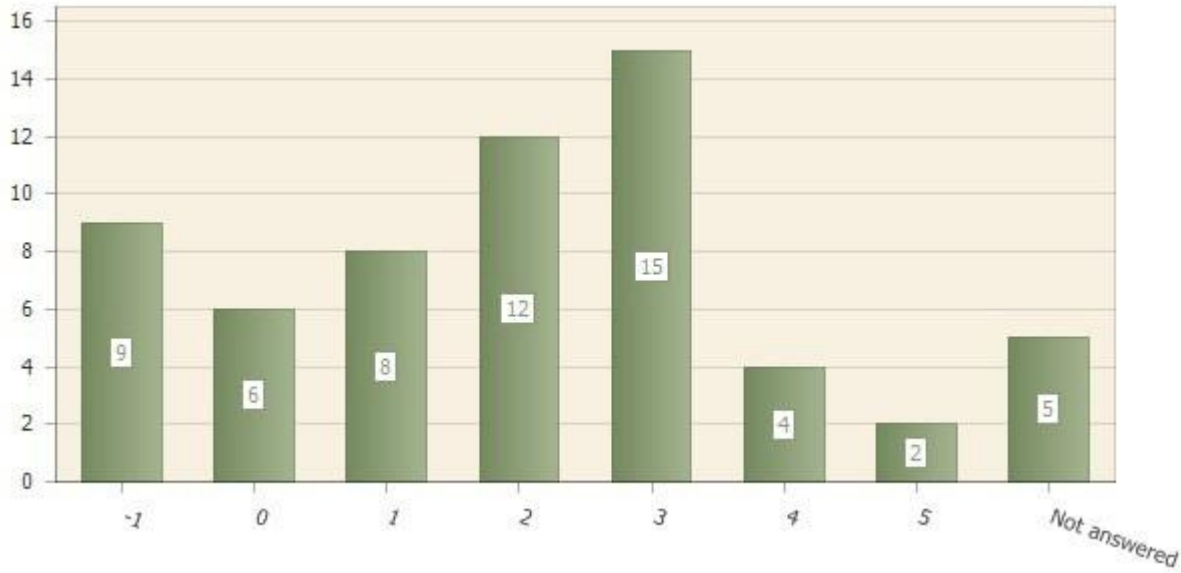
How would you rate the access faculty have to information concerning Cañada's budget?

Question type: Matrix & Multimatrix

Number of responses: 56

Number of respondents: 61

Scale: 0 (Very Unsatisfactory) – 5 (Very Satisfactory); -1: NO OPINION/ UNSURE



Matrix row	Not answered	Mean	Std dev	Count and % Rating 0	Count and % Rating 1	Count and % Rating 2	Count and % Rating 3	Count and % Rating 4	Count and % Rating 5	NO OPINION/ UNSURE
rating	14 (23.0%)	2.2	1.3	6 (10.7%)	8 (14.3%)	12 (21.4%)	15 (26.8%)	4 (7.1%)	2 (3.6%)	9 (16.1%)

2.11. P4Q3

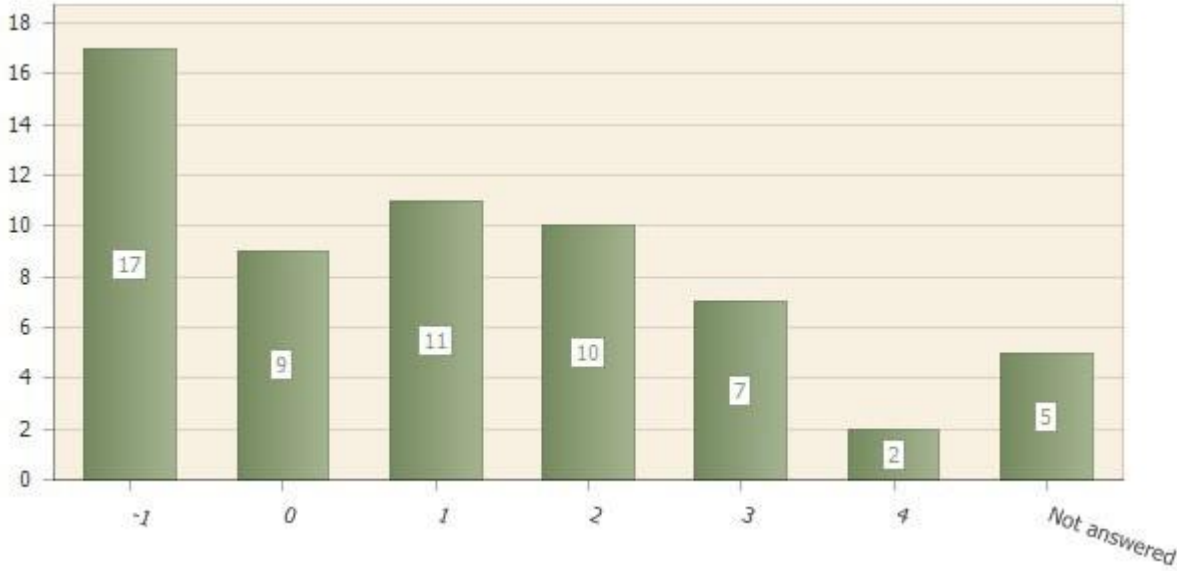
How would you rate the explanation for why some aspects of Cañada's budget are unavailable to faculty?

Question type: Matrix & Multimatrix

Number of responses: 56

Number of respondents: 61

Scale: 0 (Very Unsatisfactory) – 5 (Very Satisfactory); -1: NO OPINION/ UNSURE



Matrix row	Not answered	Mean	Std dev	Count and % Rating 0	Count and % Rating 1	Count and % Rating 2	Count and % Rating 3	Count and % Rating 4	Count and % Rating 5	NO OPINION/ UNSURE
rating	22 (36.1%)	1.5	1.2	9 (16.1%)	11 (19.6%)	10 (17.9%)	7 (12.5%)	2 (3.6%)	0 (0%)	17 (30.4%)

2.12. P5Q1

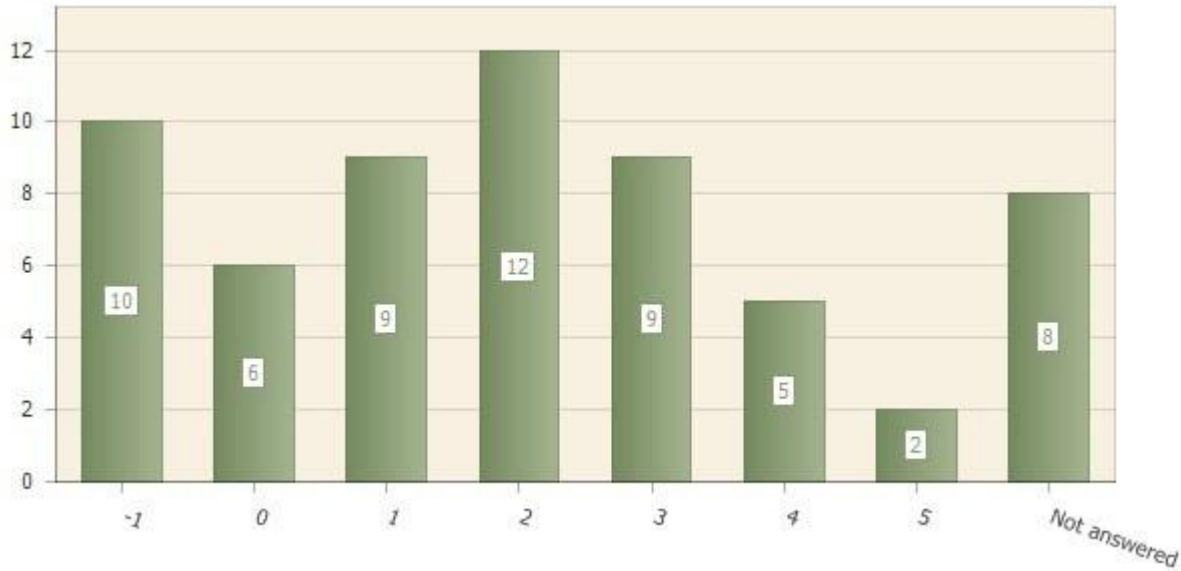
How would you rate institutional memory at Cañada?

Question type: Matrix & Multimatrix

Number of responses: 53

Number of respondents: 61

Scale: 0 (Very Unsatisfactory) – 5 (Very Satisfactory); -1: NO OPINION/ UNSURE



Matrix row	Not answered	Mean	Std dev	Count and % Rating 0	Count and % Rating 1	Count and % Rating 2	Count and % Rating 3	Count and % Rating 4	Count and % Rating 5	NO OPINION/ UNSURE
rating	18 (29.5%)	2.1	1.4	6 (11.3%)	9 (17.0%)	12 (22.6%)	9 (17.0%)	5 (9.4%)	2 (3.8%)	10 (18.9%)

2.13. P6Q1

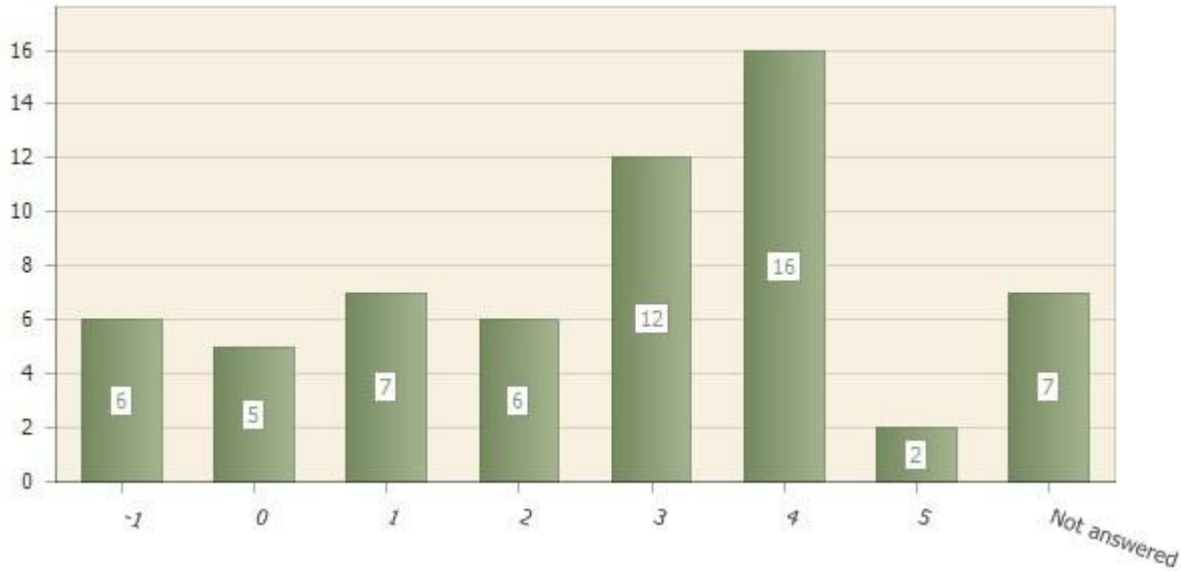
How would you rate the collegial working relationships between the President and faculty members at Cañada?

Question type: Matrix & Multimatrix

Number of responses: 54

Number of respondents: 61

Scale: 0 (Very Unsatisfactory) – 5 (Very Satisfactory); -1: NO OPINION/ UNSURE



Matrix row	Not answered	Mean	Std dev	Count and % Rating 0	Count and % Rating 1	Count and % Rating 2	Count and % Rating 3	Count and % Rating 4	Count and % Rating 5	NO OPINION/ UNSURE
rating	13 (21.3%)	2.7	1.4	5 (9.3%)	7 (13.0%)	6 (11.1%)	12 (22.2%)	16 (29.6%)	2 (3.7%)	6 (11.1%)

2.14. P6Q2

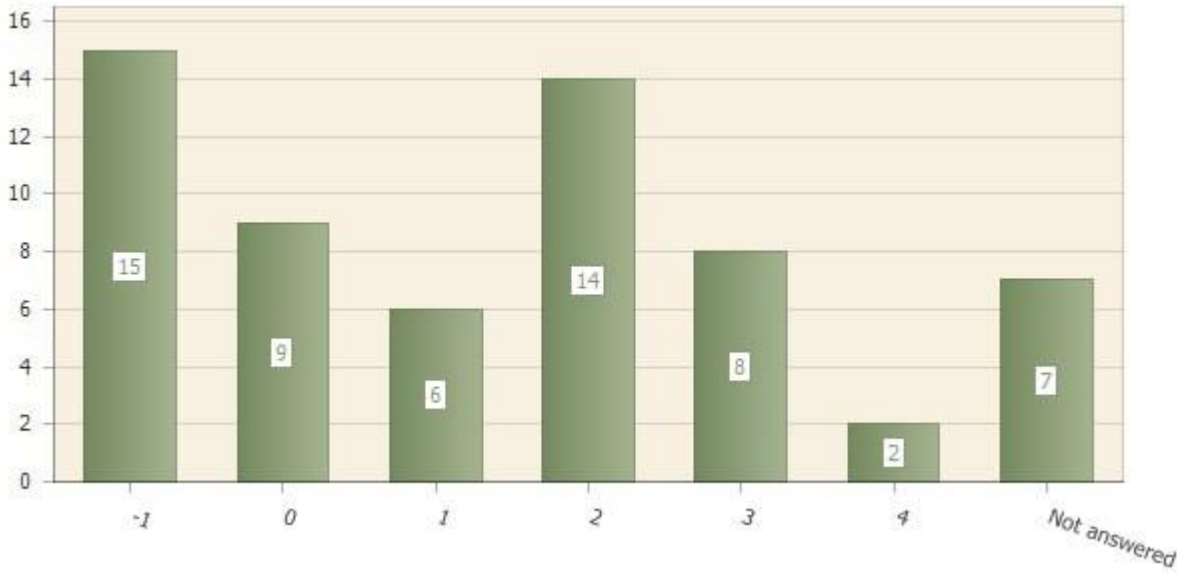
How would you rate the collegial working relationships between individual Vice Presidents and faculty members at Cañada?

Question type: Matrix & Multimatrix

Number of responses: 54

Number of respondents: 61

Scale: 0 (Very Unsatisfactory) – 5 (Very Satisfactory); -1: NO OPINION/ UNSURE



Matrix row	Not answered	Mean	Std dev	Count and % Rating 0	Count and % Rating 1	Count and % Rating 2	Count and % Rating 3	Count and % Rating 4	Count and % Rating 5	NO OPINION/ UNSURE
rating	22 (36.1%)	1.7	1.2	9 (16.7%)	6 (11.1%)	14 (25.9%)	8 (14.8%)	2 (3.7%)	0 (0%)	15 (27.8%)

2.15. P6Q3

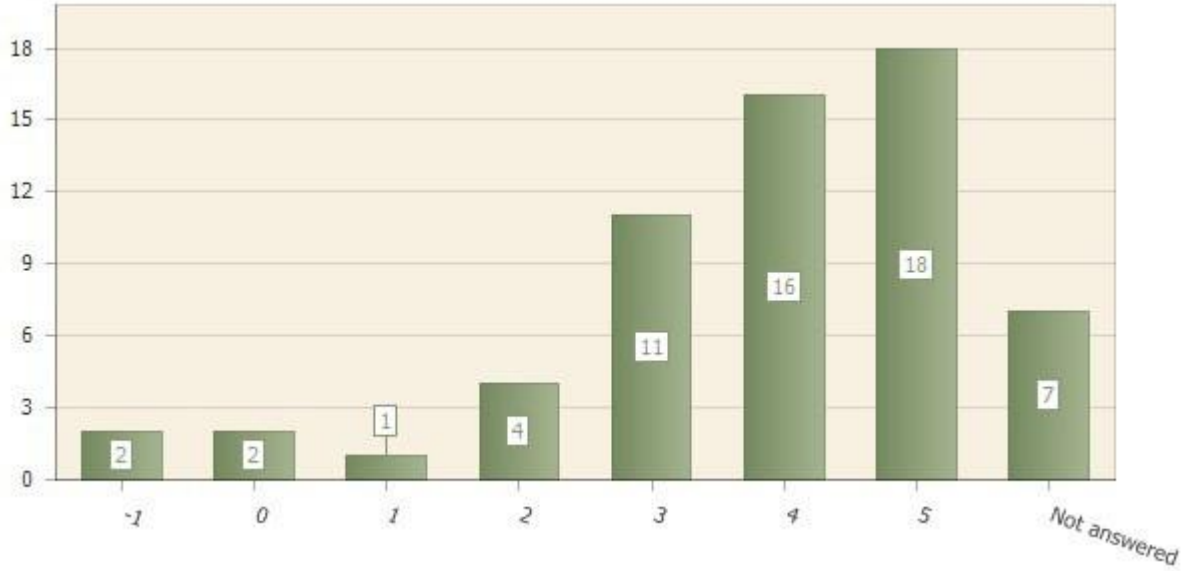
How would you rate the collegial working relationships between individual Deans and faculty members at Cañada?

Question type: Matrix & Multimatrix

Number of responses: 54

Number of respondents: 61

Scale: 0 (Very Unsatisfactory) – 5 (Very Satisfactory); -1: NO OPINION/ UNSURE



Matrix row	Not answered	Mean	Std dev	Count and % Rating 0	Count and % Rating 1	Count and % Rating 2	Count and % Rating 3	Count and % Rating 4	Count and % Rating 5	NO OPINION/ UNSURE
rating	9 (14.8%)	3.8	1.3	2 (3.7%)	1 (1.9%)	4 (7.4%)	11 (20.4%)	16 (29.6%)	18 (33.3%)	2 (3.7%)

2.16. P6Q4

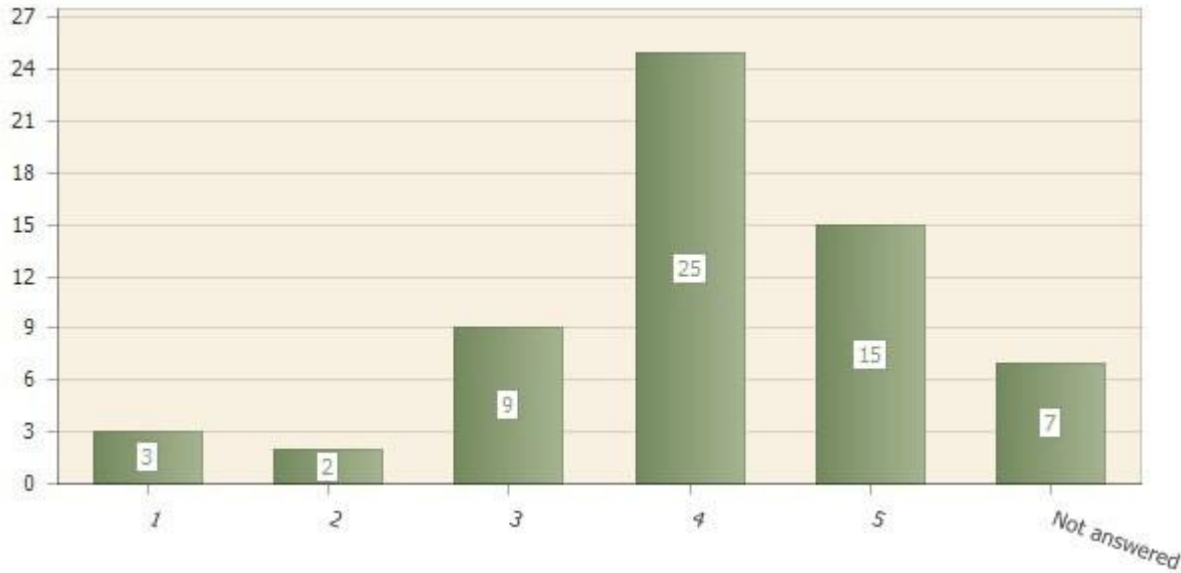
How would you rate the collegial working relationships between individual faculty members at Cañada?

Question type: Matrix & Multimatrix

Number of responses: 54

Number of respondents: 61

Scale: 0 (Very Unsatisfactory) – 5 (Very Satisfactory); -1: NO OPINION/ UNSURE



Matrix row	Not answered	Mean	Std dev	Count and % Rating 0	Count and % Rating 1	Count and % Rating 2	Count and % Rating 3	Count and % Rating 4	Count and % Rating 5	NO OPINION/ UNSURE
rating	7 (11.5%)	3.9	1.0	0 (0%)	3 (5.6%)	2 (3.7%)	9 (16.7%)	25 (46.3%)	15 (27.8%)	0 (0%)

2.17. P6Q5

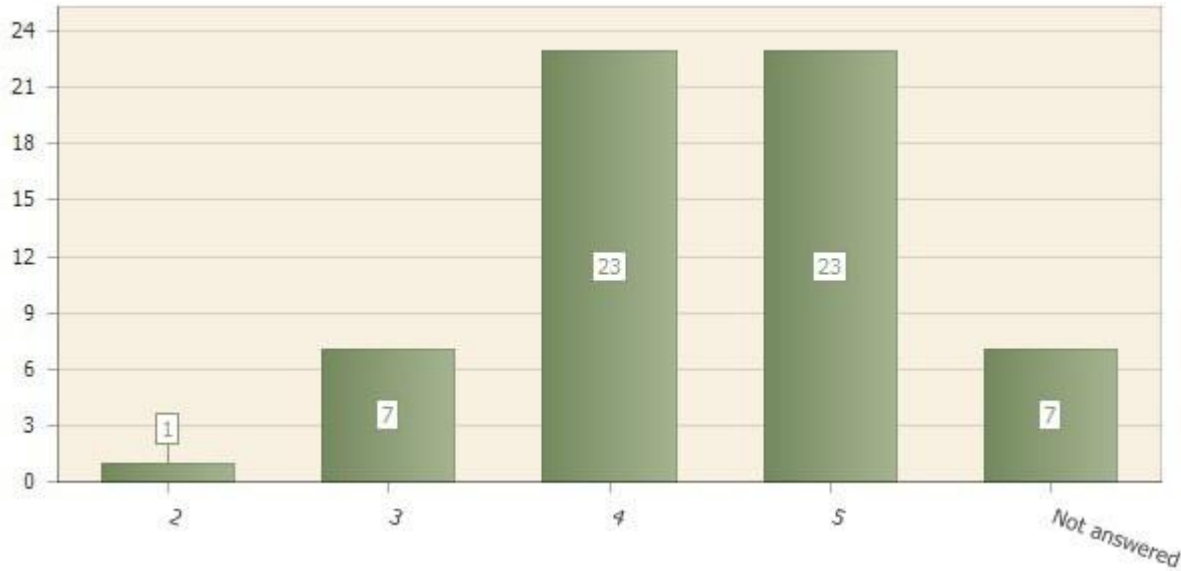
How would you rate collegial working relationships between the staff and faculty members at Cañada?

Question type: Matrix & Multimatrix

Number of responses: 54

Number of respondents: 61

Scale: 0 (Very Unsatisfactory) – 5 (Very Satisfactory); -1: NO OPINION/ UNSURE



Matrix row	Not answered	Mean	Std dev	Count and % Rating 0	Count and % Rating 1	Count and % Rating 2	Count and % Rating 3	Count and % Rating 4	Count and % Rating 5	NO OPINION/ UNSURE
rating	7 (11.5%)	4.3	0.8	0 (0%)	0 (0%)	1 (1.9%)	7 (13.0%)	23 (42.6%)	23 (42.6%)	0 (0%)

2.18. 7Q1

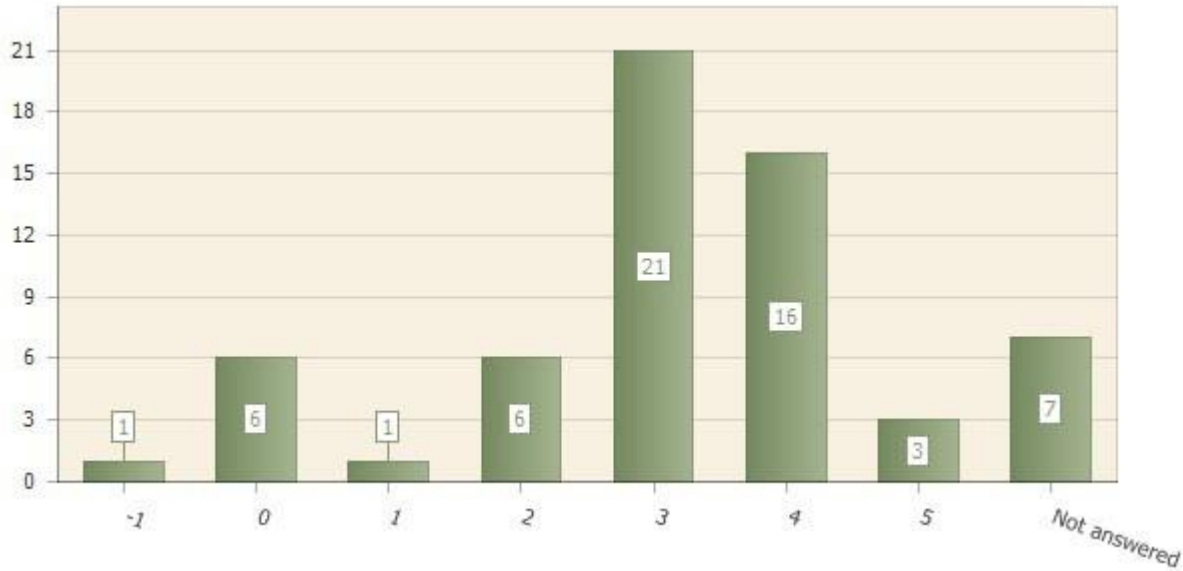
How do you rate the support faculty receive at Cañada?

Question type: Matrix & Multimatrix

Number of responses: 54

Number of respondents: 61

Scale: 0 (Very Unsatisfactory) – 5 (Very Satisfactory); -1: NO OPINION/ UNSURE



Matrix row	Not answered	Mean	Std dev	Count and % Rating 0	Count and % Rating 1	Count and % Rating 2	Count and % Rating 3	Count and % Rating 4	Count and % Rating 5	NO OPINION/ UNSURE
rating	8 (13.1%)	2.9	1.3	6 (11.1%)	1 (1.9%)	6 (11.1%)	21 (38.9%)	16 (29.6%)	3 (5.6%)	1 (1.9%)

2.19. P7Q2

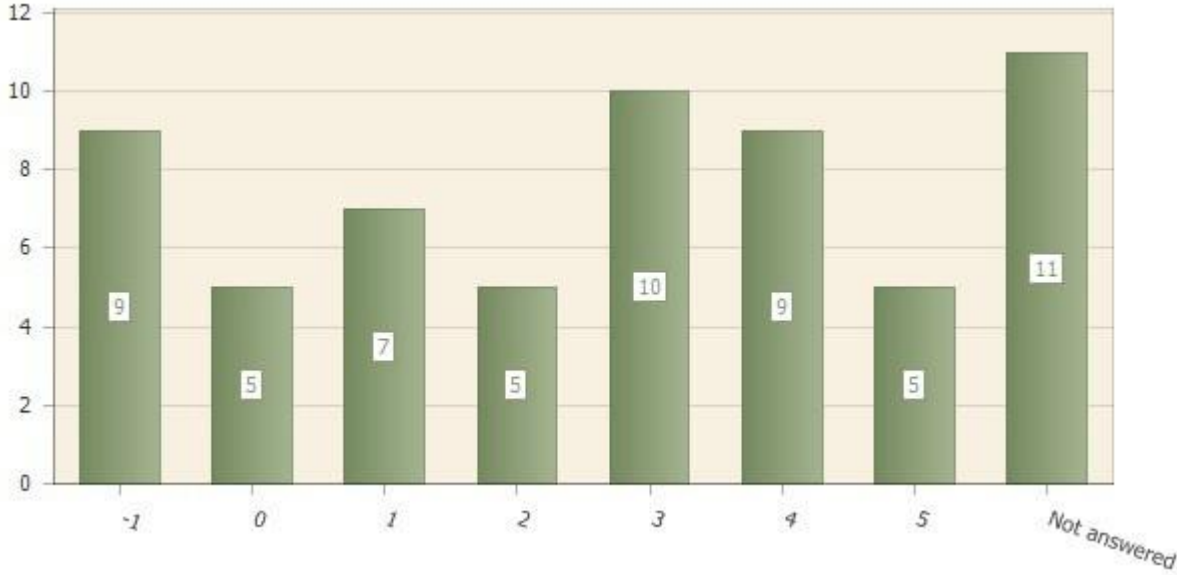
How would you rate the support you receive from the President?

Question type: Matrix & Multimatrix

Number of responses: 50

Number of respondents: 61

Scale: 0 (Very Unsatisfactory) – 5 (Very Satisfactory); -1: NO OPINION/ UNSURE



Matrix row	Not answered	Mean	Std dev	Count and % Rating 0	Count and % Rating 1	Count and % Rating 2	Count and % Rating 3	Count and % Rating 4	Count and % Rating 5	NO OPINION/ UNSURE
rating	20 (32.8%)	2.6	1.6	5 (10.0%)	7 (14.0%)	5 (10.0%)	10 (20.0%)	9 (18.0%)	5 (10.0%)	9 (18.0%)

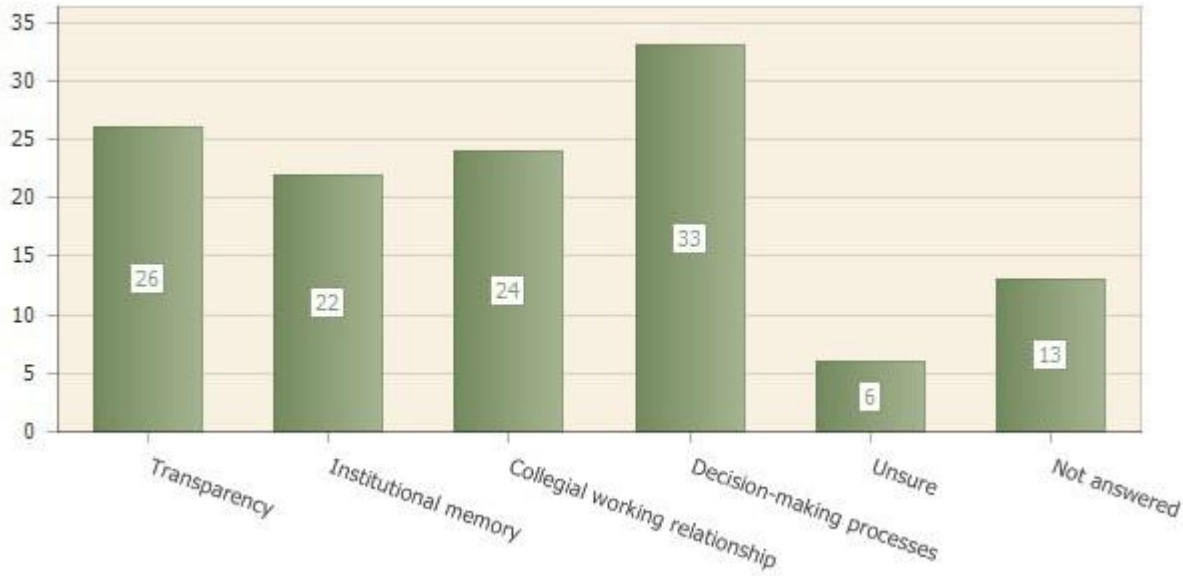
2.20. P7Q3

Which of the following factors should be addressed in order to improve support from the President? Check all that apply.

Question type: Multiple choice

Number of responses: 48

Number of respondents: 61



Answer	Count	Percent answer
Transparency	26	42.6%
Institutional memory	22	36.1%
Collegial working relationship	24	39.3%
Decision-making processes	33	54.1%
Unsure	6	9.8%
Not answered	13	21.3%

2.21. P8Q1

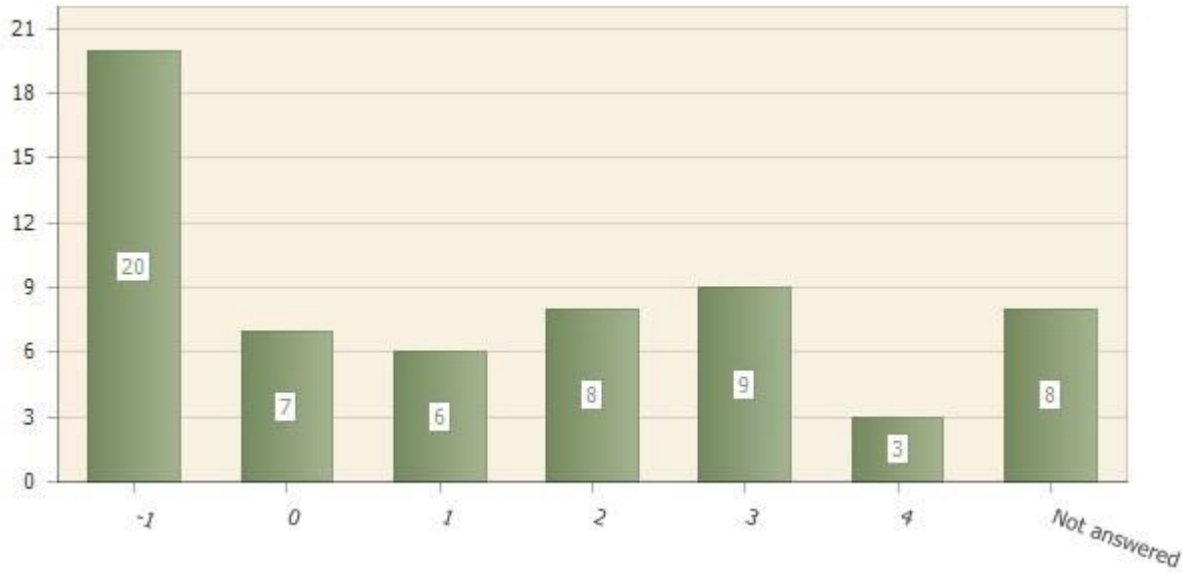
How would you rate the support you receive from the Vice Presidents?

Question type: Matrix & Multimatrix

Number of responses: 53

Number of respondents: 61

Scale: 0 (Very Unsatisfactory) – 5 (Very Satisfactory); -1: NO OPINION/ UNSURE



Matrix row	Not answered	Mean	Std dev	Count and % Rating 0	Count and % Rating 1	Count and % Rating 2	Count and % Rating 3	Count and % Rating 4	Count and % Rating 5	NO OPINION/ UNSURE
rating	28 (45.9%)	1.8	1.3	7 (13.2%)	6 (11.3%)	8 (15.1%)	9 (17.0%)	3 (5.7%)	0 (0%)	20 (37.7%)

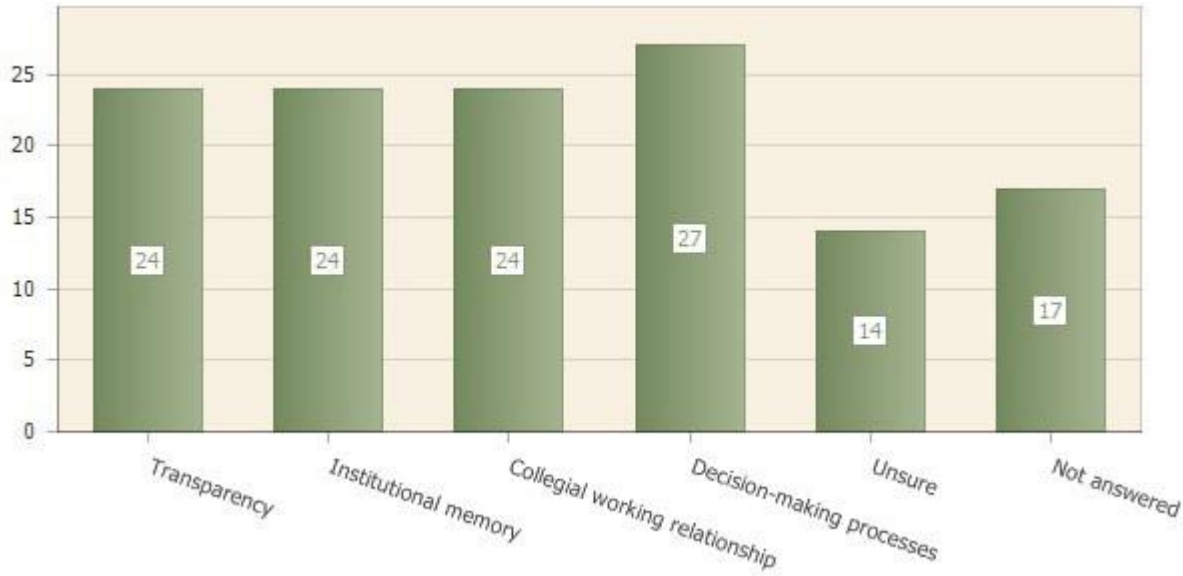
2.22. P8Q2

Which of the following factors should be addressed in order to improve support from the Vice Presidents? Check all that apply.

Question type: Multiple choice

Number of responses: 44

Number of respondents: 61



Answer	Count	Percent answer
Transparency	24	39.3%
Institutional memory	24	39.3%
Collegial working relationship	24	39.3%
Decision-making processes	27	44.3%
Unsure	14	23.0%
Not answered	17	27.9%

2.23. P9Q1

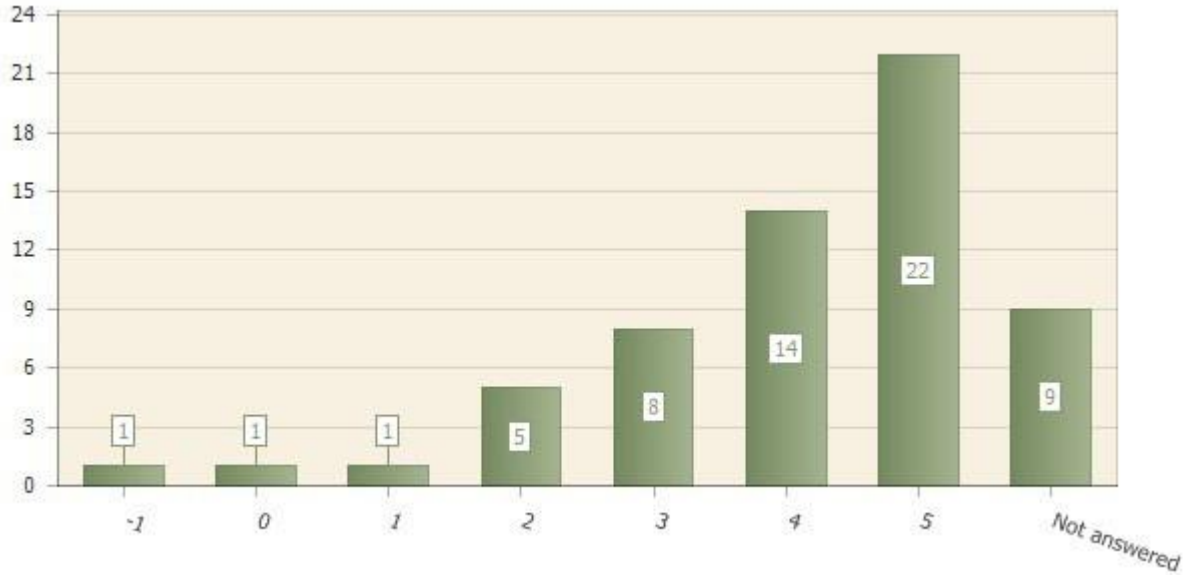
How would you rate the support you receive from your Dean?

Question type: Matrix & Multimatrix

Number of responses: 52

Number of respondents: 61

Scale: 0 (Very Unsatisfactory) – 5 (Very Satisfactory); -1: NO OPINION/ UNSURE



Matrix row	Not answered	Mean	Std dev	Count and % Rating 0	Count and % Rating 1	Count and % Rating 2	Count and % Rating 3	Count and % Rating 4	Count and % Rating 5	NO OPINION/ UNSURE
rating	10 (16.4%)	3.9	1.2	1 (1.9%)	1 (1.9%)	5 (9.6%)	8 (15.4%)	14 (26.9%)	22 (42.3%)	1 (1.9%)

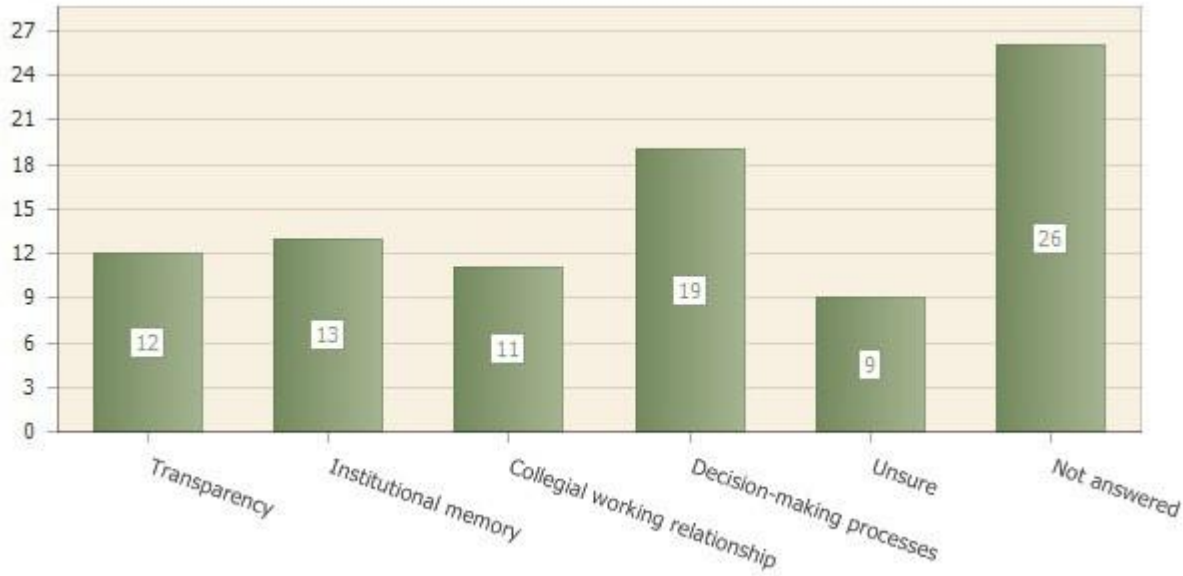
2.24. P9Q2

Which of the following factors should be addressed in order to improve support from your Dean? Check all that apply.

Question type: Multiple choice

Number of responses: 35

Number of respondents: 61



Answer	Count	Percent answer
Transparency	12	19.7%
Institutional memory	13	21.3%
Collegial working relationship	11	18.0%
Decision-making processes	19	31.1%
Unsure	9	14.8%
Not answered	26	42.6%

2.38. P10Q1

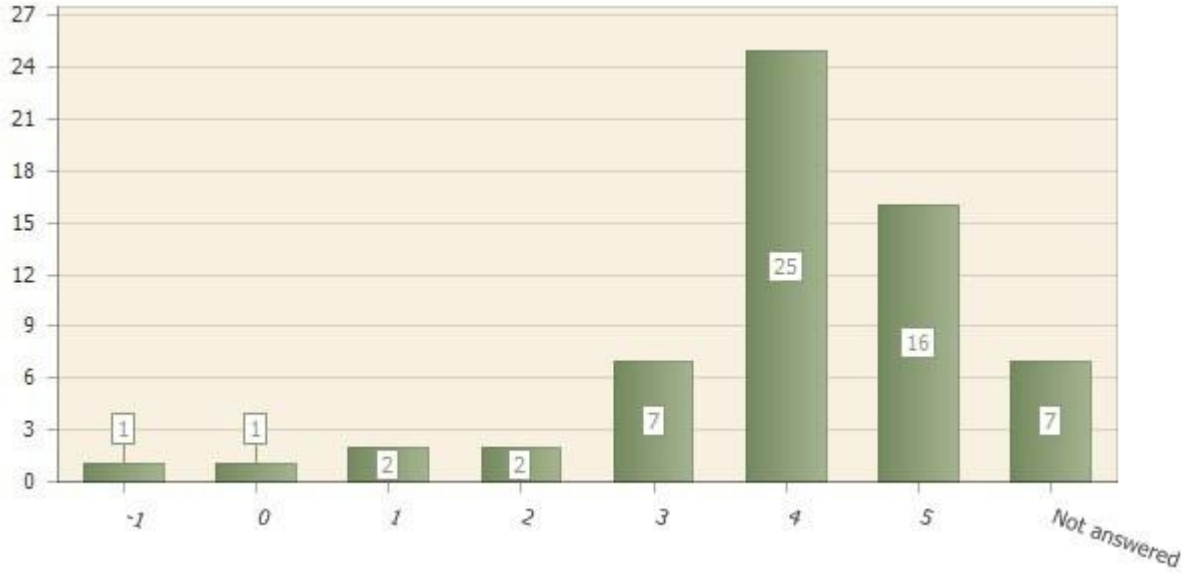
How would you rate the support you receive from other faculty members?

Question type: Matrix & Multimatrix

Number of responses: 54

Number of respondents: 61

Scale: 0 (Very Unsatisfactory) – 5 (Very Satisfactory); -1: NO OPINION/ UNSURE



Matrix row	Not answered	Mean	Std dev	Count and % Rating 0	Count and % Rating 1	Count and % Rating 2	Count and % Rating 3	Count and % Rating 4	Count and % Rating 5	NO OPINION/ UNSURE
rating	8 (13.1%)	3.9	1.1	1 (1.9%)	2 (3.7%)	2 (3.7%)	7 (13.0%)	25 (46.3%)	16 (29.6%)	1 (1.9%)

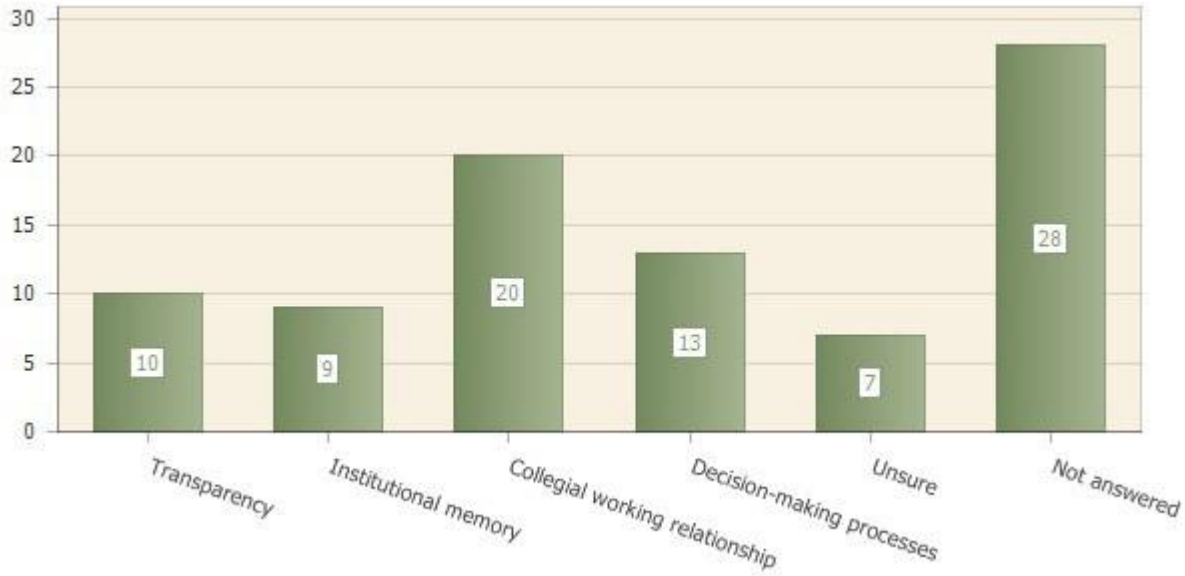
2.39. P10Q2

Which of the following factors should be addressed in order to improve support from other faculty members? Check all that apply.

Question type: Multiple choice

Number of responses: 33

Number of respondents: 61



Answer	Count	Percent answer
Transparency	10	16.4%
Institutional memory	9	14.8%
Collegial working relationship	20	32.8%
Decision-making processes	13	21.3%
Unsure	7	11.5%
Not answered	28	45.9%

2.42. P11Q1

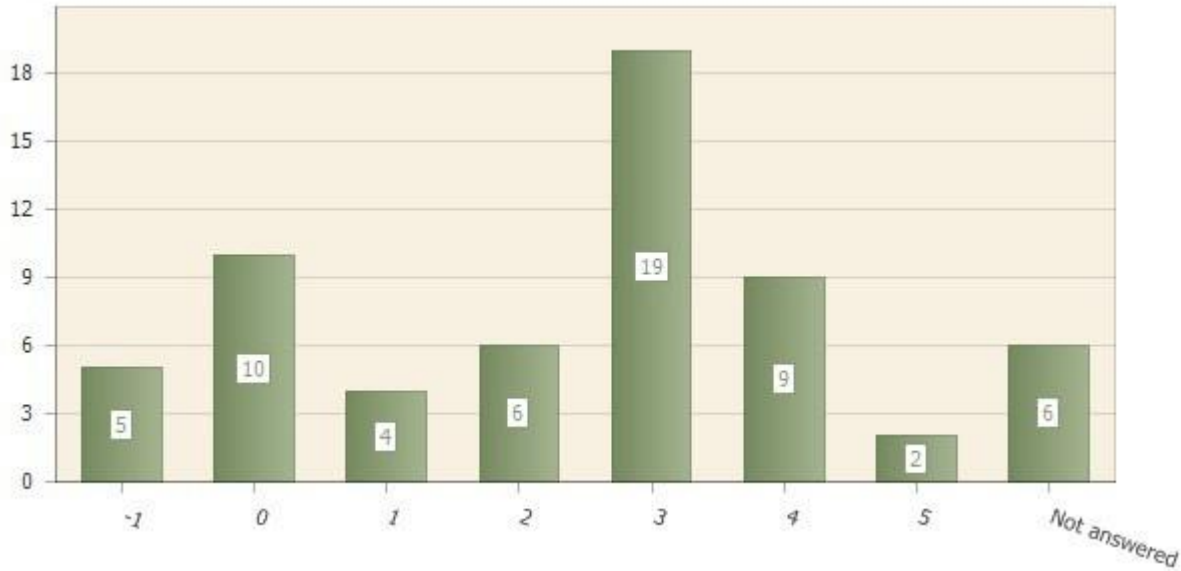
How would you rate hiring procedures at Cañada?

Question type: Matrix & Multimatrix

Number of responses: 55

Number of respondents: 61

Scale: 0 (Very Unsatisfactory) – 5 (Very Satisfactory); -1: NO OPINION/ UNSURE



Matrix row	Not answered	Mean	Std dev	Count and % Rating 0	Count and % Rating 1	Count and % Rating 2	Count and % Rating 3	Count and % Rating 4	Count and % Rating 5	NO OPINION/ UNSURE
rating	11 (18.0%)	2.4	1.5	10 (18.2%)	4 (7.3%)	6 (10.9%)	19 (34.5%)	9 (16.4%)	2 (3.6%)	5 (9.1%)

2.43. P11Q2

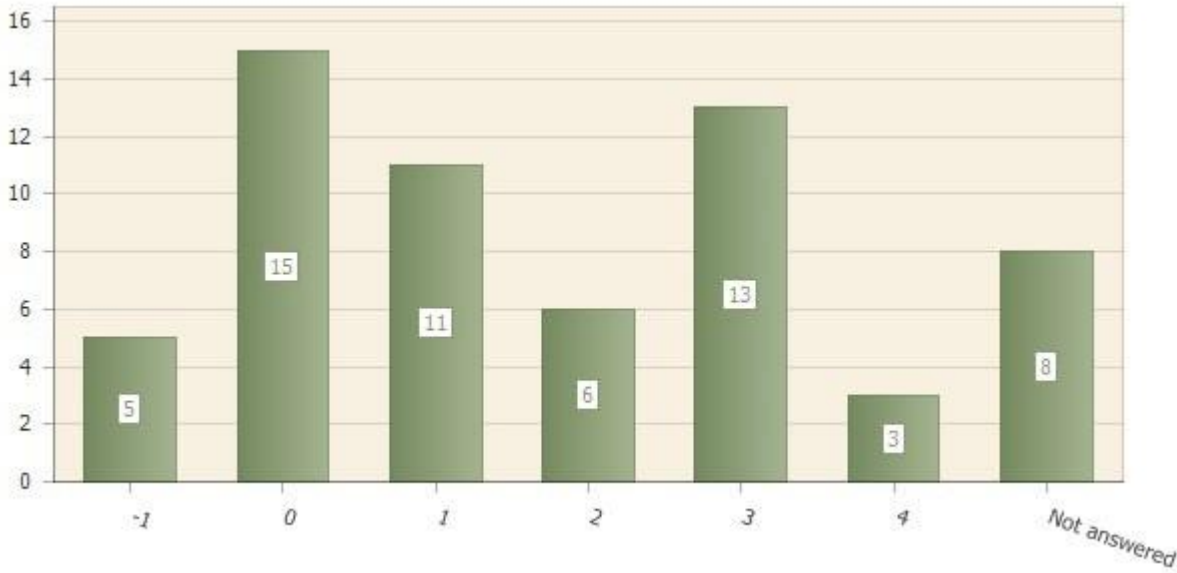
How would you rank the appropriateness for Vice Presidents or higher-ranking administrators to be involved in the first round of meetings and interviews of hiring committees?

Question type: Matrix & Multimatrix

Number of responses: 53

Number of respondents: 61

Scale: 0 (Not appropriate) – 5 (Appropriate); -1: NO OPINION/ UNSURE



Matrix row	Not answered	Mean	Std dev	Count and % Rating 0	Count and % Rating 1	Count and % Rating 2	Count and % Rating 3	Count and % Rating 4	Count and % Rating 5	NO OPINION/ UNSURE
rating	13 (21.3%)	1.5	1.4	15 (28.3%)	11 (20.8%)	6 (11.3%)	13 (24.5%)	3 (5.7%)	0 (0%)	5 (9.4%)

2.44. P11Q3

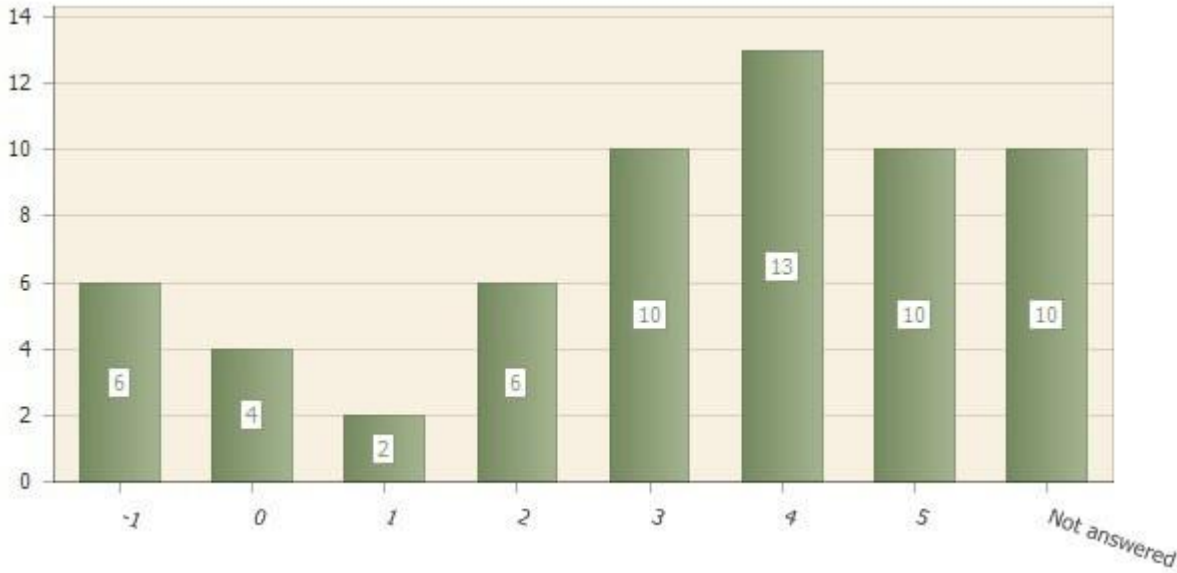
How would you rank the issue of hiring priorities at Cañada?

Question type: Matrix & Multimatrix

Number of responses: 51

Number of respondents: 61

Scale: 0 (Note an issue) – 5 (Extremely urgent); -1: NO OPINION/ UNSURE



Matrix row	Not answered	Mean	Std dev	Count and % Rating 0	Count and % Rating 1	Count and % Rating 2	Count and % Rating 3	Count and % Rating 4	Count and % Rating 5	NO OPINION/ UNSURE
rating	16 (26.2%)	3.2	1.5	4 (7.8%)	2 (3.9%)	6 (11.8%)	10 (19.6%)	13 (25.5%)	10 (19.6%)	6 (11.8%)

