

Cañada College at Menlo Park



September 25, 2019

Location: 1200 O'Brien Drive, Menlo Park, CA

Created By: Julian Branch, Director of Workforce Development

Phone: 650.325.0164



Mission Statement

Cañada College provides **our community** with a learning-centered environment, ensuring that all students have equitable opportunities to achieve their transfer, career education, and lifelong learning educational goals. The College cultivates their students' ability to think critically and creatively, communicate effectively, reason quantitatively, and understand and appreciate different points of view within a diverse community.



Values

- Transforming Lives
- High Academic Standards
- Diverse and Inclusive Environment
- Student Success in Achieving Educational Goals
- Community, Education, and Industry Partnerships
- Communication and Collaboration
- Engaging Student Life
- Accountability
- Sustainability
- Transparency



“...the community college district will provide educational programs of benefit to residents and employees of the project area....”

Menlo Park Las Pulgas Community Development Project, 1992



Jobtrain

JobTrain is a 501(c)3 nonprofit educational and training institution accredited by the Western Association of Schools and Colleges.

Each of JobTrain's programs combines vocational training, academics, and essential skills development, preparing students to turn their lives around—from unemployment and poverty to success and self-sufficiency.

Medical Assistant
Training

Nursing Assistant

Culinary Arts

Carpentry

It Services & Support

Job Train - Working up Group

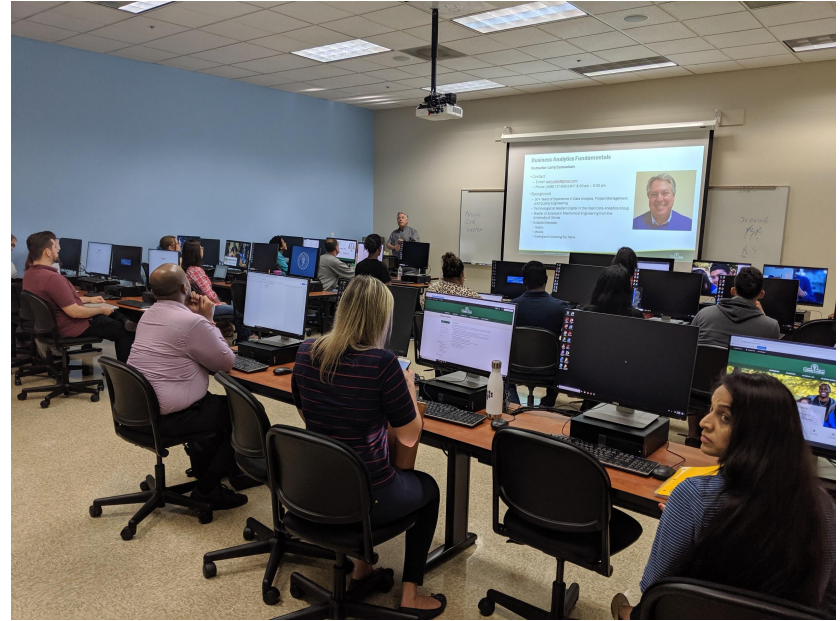
1. Pathway Design and Mapping
2. Support Services -- more + longer
3. Employer Engagement (Leadership)
4. Skills Education + Training (Technical + Essential)
5. Earn + Learn/ Apprenticeships
6. Supplemental economic support income/ benefits
7. Support community diversity and eliminate discrimination throughout the employment processes



Menlo Park Location

- Menlo Park: Satellite Campus of Cañada College
- Jointly funded by Cañada College & Menlo Park
- Grant Period: January 29, 1992 - January 29, 2031
- Two Classrooms, One Media Lab, Two offices, and a waiting area

https://docs.google.com/document/d/1J32mAy_wIPM87fV6YLSJ91zucqMh-RAJKEDsoSZ4DU/edit



Staffing

- Julian Branch, Director of Workforce Development
- Martha S Chavez, Instructional Aide
- Jonathan Wax, Program Services Coordinator
- Nina Robin , Staff Assistant



Framework

Second Language:

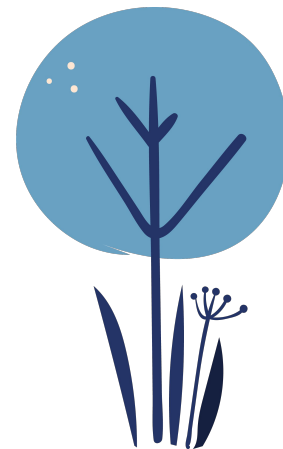
Expand ESL offerings to four classes. Once students complete their ESL coursework students can transition into a professional certificate or general elective classes so students can complete their AA degree

General Electives

For the Spring 2020, we are looking at adding a series of courses which will allow students in Menlo Park to complete their GE courses.

Certificate:

Offer a series of certificate courses for students to transition into the workforce and have a livable wage in the Bay area.



Fall 2019 Classes/Programs

MATH 811: Pre-algebra

Tuesday & Thursday: 6:30 - 8:45 p.m.

CBOT 432: Introduction to Computer Applications

Monday: 6:10 - 9:15 p.m.

ECE: 254: Teaching in a Diverse Society

Tuesday: 6:10 - 10:00 p.m.

CRER 137: Life and Career Planning

Monday: 5:00 - 8:00 p.m.

ESL 800: ESL Preparatory Course

Tuesday & Thursday: 9:00 - 11:10 a.m.

Certificates

Data Analysis with Silicon Valley Bank



Student Population - Surrounding Areas

- English 100 317 Students
- Math 200 223 Students
- English 110 206 Students
- Math 120 169 Students
- Fint 117 155 Students
- BIOL 130 149 Students
- PSYC 100 148 Students
- CBOT 430 94 Students
- ECON 100 94 Students

2013-2014
To
2018-2019

Proposed Classes/Programs

Second Language: (3 Classes)

- ESL Preparatory Courses (two)
- Reading and Listening - Speaking 1

General Electives (14 Classes)

- Pre Algebra
- Observational and Youth Assessment
- Intro- Computer Science
- Reading and Composition
- Introduction to Psychology
- And more

Certificate: 5 -6 (Classes)

- Cloud Computing
- Data Analysis (Not-for-profit)/ Academic Credit
- Small Business Marketing (Not-for-profit)
- Optician (Not-for-profit)/ Academic Credit



Enrollment Trends - Unique Students

Academic Year	Term	Headcount	MP Only	%	MP and Cañada
2014-2015	Fall, Spring	340	68	20.0%	272
2015-2016	Fall, Spring	259	53	20.5%	206
2016-2017	Fall, Summer, Spring	209	23	11.0%	186
2017-2018	Fall, Summer, Spring	178	39	21.9%	139
2018-2019	Fall, Spring	120	18	15.0%	102
2019-2020	Fall*, No Summer,	101	38	46.3%	44

*Not-for Credit Class

Cost to Run - 3 Units

5-6 Classes

\$8,427 Per Class to \$14,538 Per Class



Budget: \$48,000

Thought Provoking Questions

1. Are we happy with the current performance of MP?
2. Do we want as a campus to expand GE courses in MP?
3. Do we want to offer more certificate courses in MP?
4. Do we want to provide more wrap around services?
5. Do we want to add an additional satellite site in Redwood City?
6. If we add more classes do we want to add a bus stop in Menlo Park?

